

COPY

DEC 07 1994

COMMISSION

1994 REMONUMENTATION PROGRAM
LAND CORNER RECORDATION CERTIFICATE

Filing Requirement of Act 74, Mich. P.A. 1970

For corners in KINGSTON TOWNSHIP

TUSCOLA (County)	Located In:	Corner Code #
1. Public Land Survey	T 12N. R 11E	M-3
	T _____ R _____	_____
	T _____ R _____	_____
	T _____ R _____	_____
2. Property Controlling in Section	S _____ T _____ R _____	_____
	S _____ T _____ R _____	_____
3. Miscellaneous Property in Sec.	S _____ T _____ R _____	_____
	S _____ T _____ R _____	_____

4. Lot No. _____, Recorded Plat _____
 5. Private Claims _____

RECEIVED FOR RECORD
 LIBER NO. _____ PAGE NO. _____
 FILING NO. #47
 Kingston Twp.
 94 NOV -9 PM 2:18
 VIRGINIA M. McLAREN
 TUSCOLA COUNTY
 REGISTER OF DEEDS
 Register of Deeds Stamp & File Number

I, Lionel Roy Emery, in a field survey on July 15, 1994, do hereby certify that under requirements of P.A. 74, Michigan P.A. of 1970, the corner points mentioned in lines 1 and 2 above were in conformance with regulations and rules therof as required in the current manual of survey instructions of the United States Department of the Interior, Bureau of Land Management or by a decree of a Court of Law and/or that the corner points mentioned in lines 3, 4 and 5 above were in conformance with the rules of the Michigan Board of Land Surveyors or by a Decree of a Court of Law; established, re-established, monumented, re-monumented, recovered, found as expressed below:

	A	B	C	D	E	F	G	H	I	J	K	L
2	6	5	4	3	2							
3												
4	7	8	9	10	11							
5												
6	18	17	16	15	14							
7												
8	19	20	21	22	23	24						
9												
10	30	29	28	27	26	25						
11												
12	31	32	33	34	35	36						
13												

NOTE: Not more than 4 corners, all in the same town and range, may be recorded on this certificate.

A. Description of original monument and accessories and/or subsequent restoration:

- 1834 (Gov't. Land Office Notes) Harvey Parke, D.S. - Set post corner Secs. 1 & 12 - Hemlock 12 N31W 8; Hemlock 9 South 9
- 1919 (Tuscola County Road Commission witness card record) - "Point of large Stone" - N55°45'E 59.0 Southeasterly* 36.7; Southwesterly* 40.5; N47°W 40.9 - direction as indicated @ sketch on card - no bearing objects given
- 1973 (Survey - Liber 430, Pages 659 and 660 Tuscola County) David T. Rowe, P.S. 11192 - Set PK nail N15°E, 59.70' - RLS tag 11192 in PP; N50°W, 71.71' RLS 11192 tag in 14" Maple; S40°W, 44.91' Road sign post
- 1976 (Land Corner Recordation Certificate) David T. Rowe, P.S. 11192 - Re-set PK nail by using occupied fence lines and center-line of Road - See over for continuation of Sec. A.

B. Description of corner evidence found and/or method applied in restoring or reestablishing corner:

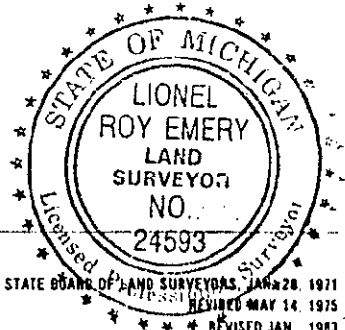
Found PK nail @ approximate centerline of Asphalt Road East-West and Gravel Road North-South PK Nail found did not fit position as indicated by either Rowe or Brown's accessories - recovered position of corner by retracing the North line of Rowe's survey and the South line of Brown's Survey. Dug in road at this position and found 6" pointed Stone at 2.2' depth. Note: New power line being constructed at time of 1994 survey. Accepted position as marking original corner.

C. Description of monument for corner and accessories established to perpetuate locating the position of the corner:

- Removed Stone and replaced with Standard Tuscola County Concrete Monument with 2" Brass Cap stamped M3 T12N/R11E. Placed 'Monument Box' over Monument.
- N58°E, 64.64' - T.C. Re-mon. tag in Southeast face of Power Pole
- S42°E, 48.26' - T.C. Re-mon. tag in Southwest face of Power Pole
- S30°W, 68.47' - T.C. Re-mon. tag above found nail in Northwest face of Telephone pole stub
- S44°W, 45.0' - Face of Road Name sign Steel post
- N55°W, 71.56' - T.C. Re-mon. tag above found nail in 24" Maple

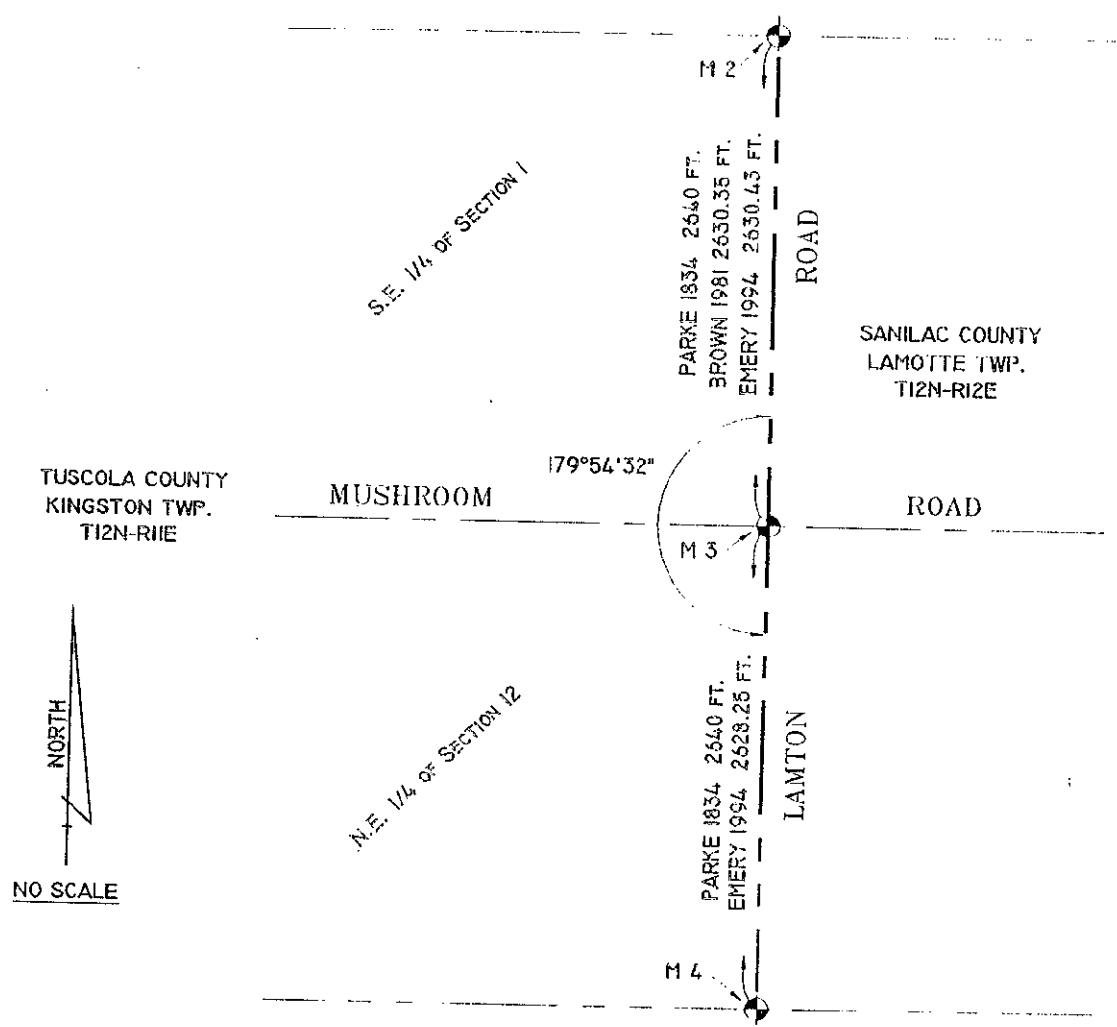
Signed by Lionel Roy Emery Date Oct. 20, 1994
 Surveyor's Michigan License No. 24593

APPROVED
 10-20-94



Accessories same as 1973 Survey
 1981 (Survey-Liber 4 of Surveys, Page 483 and 484 Sanilac County) Russell L. Brown, P.S. 24588
 -Found PK Nail- N40°E 59.74' to Spike in P.P.; N65°W 71.57' to Spike in 16" Maple; S45°W
 68.60' to Spike in Wood Post

COPY



COPY