

DEC 07 1994

COMMISSION

COPY

1994 REMONUMENTATION PROGRAM
LAND CORNER RECORDATION CERTIFICATE
Filing Requirement of Act 74, Mich. P.A. 1970

For corners in KINGSTON TOWNSHIP

<u>TUSCOLA</u> (County)	Located In:	Corner Code #/
1. Public Land Survey	T 12N. R 11E	M-6
	T _____ R _____	_____
	T _____ R _____	_____
	T _____ R _____	_____
2. Property Controlling in Section	S _____ T _____ R _____	_____
	S _____ T _____ R _____	_____
3. Miscellaneous Property in Sec.	S _____ T _____ R _____	_____
	S _____ T _____ R _____	_____

RECEIVED FOR RECORD
LIBER NO. _____ PAGE NO. _____
FILING NO. #50
Kingsston Twp.
94 NOV -9 PM 2: 18
VIRGINIA H. McLAREN
TUSCOLA COUNTY
REGISTER OF DEEDS
Register of Deeds Stamp & File Number

4. Lot No. _____, Recorded Plat _____
5. Private Claims _____

A	B	C	D	E	F	G	H	I	J	K	L
2	6	5	4	3	2	1					
3											
4	7	8	9	10	11	12					
5											
6	18	17	16	15	14	13					
7											
8	19	20	21	22	23	24					
9											
10	30	29	28	27	26	25					
11											
12	31	32	33	34	35	36					
13											

I, Lionel Roy Emery, in a field survey on July 13, 1994, do hereby certify that under requirements of P.A. 74, Michigan P.A. of 1970, the corner points mentioned in lines 1 and 2 above were in conformance with regulations and rules therefore as required in the current manual of survey instructions of the United States Department of the Interior, Bureau of Land Management or by a decree of a Court of Law and/or that the corner points mentioned in lines 3, 4 and 5 above were in conformance with the rules of the Michigan Board of Land Surveyors or by a Decree of a Court of Law; established, re-established, monumented, re-monumented, recovered, found as expressed below:

NOTE: Not more than 4 corners, all in the same town and range, may be recorded on this certificate.

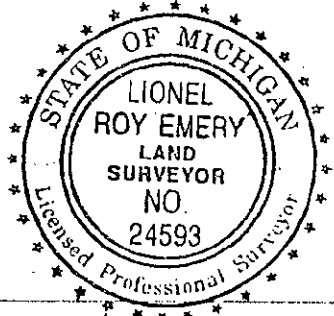
A. Description of original monument and accessories and/or subsequent restoration:
1834 (Gov't. Land Office Notes) Harvey Parke, D.S. -Set qr. Sec. post- B. Ash 12 N18W 41; Elm 8 S7W 23

No record of Subsequent restoration.

B. Description of corner evidence found and/or method applied in restoring or reestablishing corner:
Found no evidence of original corner.

Set position at single proportion measurement between Northeast and Southeast corners of Section 13.

C. Description of monument for corner and accessories established to perpetuate locating the position of the corner:
Placed Standard Tuscola Concrete Monument with 2" Brass Cap stamped M6 T12N/R11E.
N12°E, 29.67'-T.C. Re-mon. tag in East face of 6" Elm
S30°E, 36.31'-T.C. Re-mon. tag in Northeast face of 8" Poplar
West, 39.02'-T.C. Re-mon. tag in North face of 12" Willow
N85°E, 34.73'-T.C. Re-mon. tag in Southeast face of 14" Elm
South, 1.0'-"Survey Marker" witness post

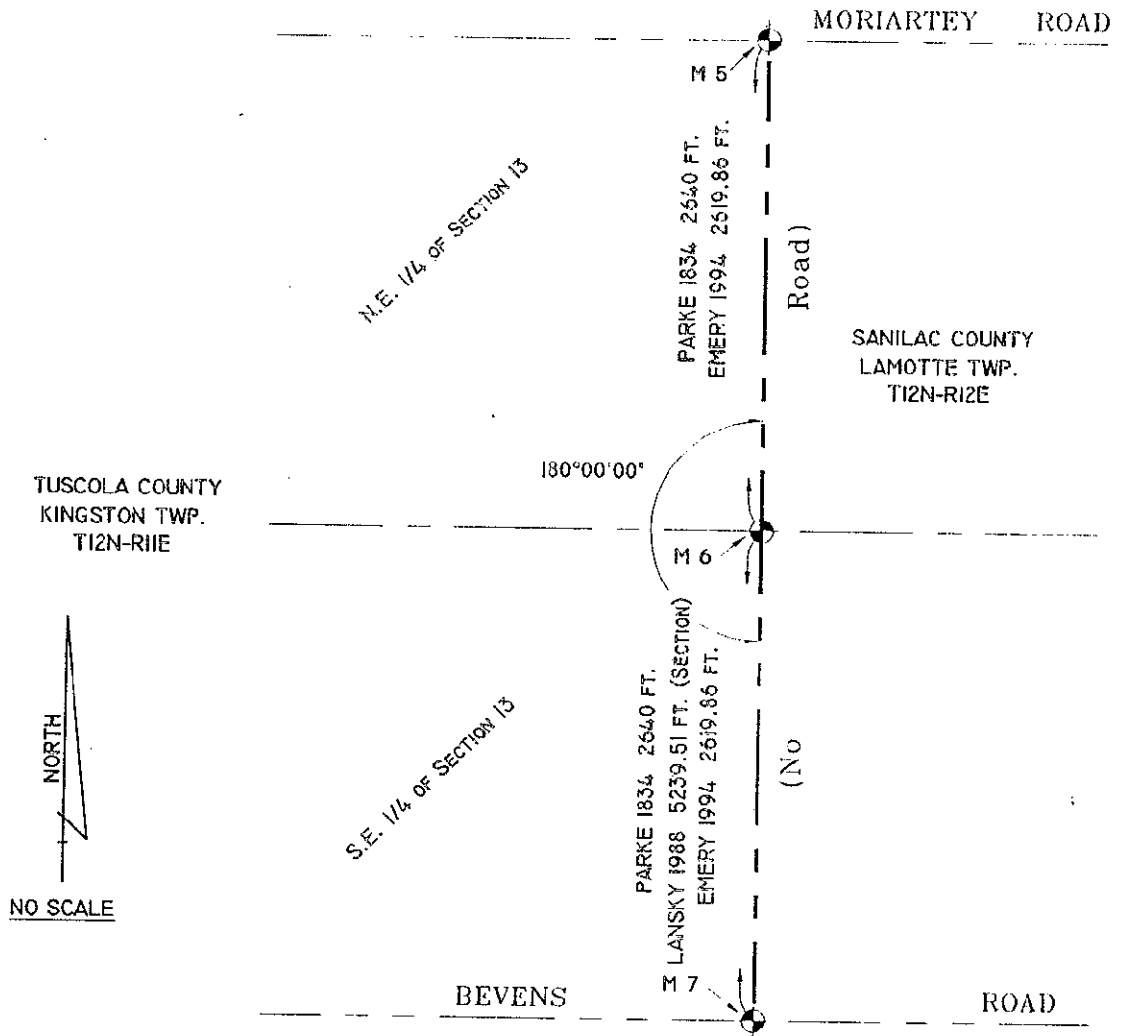


Signed by Lionel Roy Emery Date Oct. 20, 1994

Surveyor's Michigan License No. 24593

APPROVED
10-20-94

COPY



COPY