

COPY

DEC 07 1994

COMMISSION

1994 REMONUMENTATION PROGRAM
LAND CORNER RECORDATION CERTIFICATE
Filing Requirement of Act 74, Mich. P.A. 1970

For corners in KINGSTON TOWNSHIP

RECEIVED FOR RECORD
LIBER NO. _____ PAGE NO. _____
FILING NO. # 51
KINGSTON TOWNSHIP
94 NOV -9 PM 2: 18
VIRGINIA M. McLAREN
TUSCOLA COUNTY
REGISTER OF DEEDS

TUSCOLA
(County)

Located In:

Corner Code #/

1. Public Land Survey	T 12N. R 11E.	M-7
	T _____ R _____	
	T _____ R _____	
	T _____ R _____	
2. Property Controlling in Section	S _____ T _____ R _____	
	S _____ T _____ R _____	
3. Miscellaneous Property in Sec.	S _____ T _____ R _____	
	S _____ T _____ R _____	

Register of Deeds Stamp & File Number

- 4. Lot No. _____, Recorded Plat _____
- 5. Private Claims _____

A	B	C	D	E	F	G	H	I	J	K	L
2	6	5	4	3	2	1					
3											
4	7	8	9	10	11	12					
5											
6	18	17	16	15	14	13					
7											
8	19	20	21	22	23	24					
9											
10	30	29	28	27	26	25					
11											
12	31	32	33	34	35	36					

I, Lionel Roy Emery, in a field survey on July 12, 1994, do hereby certify that under requirements of P.A. 74, Michigan P.A. of 1970, the corner points mentioned in lines 1 and 2 above were in conformance with regulations and rules therefore as required in the current manual of survey instructions of the United States Department of the Interior, Bureau of Land Management or by a decree of a Court of Law and/or that the corner points mentioned in lines 3, 4 and 5 above were in conformance with the rules of the Michigan Board of Land Surveyors or by a Decree of a Court of Law; established, re-established, monumented, re-monumented, recovered, found as expressed below:

NOTE: Not more than 4 corners, all in the same town and range, may be recorded on this certificate.

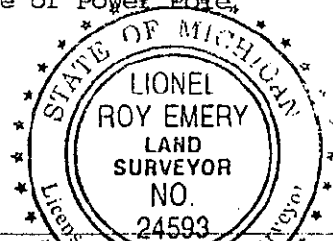
- A. Description of original monument and accessories and/or subsequent restoration:
- 1834 (Gov't. Land Office Noted) Harvey Parke, D.S. -Set post corner Secs. 13 & 24- Hemlock 10 N8W 6; Hemlock 8 S25W 18
 - 1961 (Tuscola County Road Plan) James L. Scott, Professional Engineer -Plan shows "approx. Sec. Cor." Sections 13, 24 T12N-R11E 18, 19 T12N-R12E--N45°W 37.38' P.Pole; N70°W 86.23' Well P. S45°W 32.28' Cor. Fence Post
 - 1973 (Survey-Liber 432, page 226; Tuscola County) Robert G. Kay, P.S. 14096 -shows SE Cor, Sec 1 T12N-R11E (no object mentioned) N40°W 37.25' Nail in P.P.: S70°E 86.25' Steel Sign Post; S40°W 38.3' U.S.G.S. Mon
 - 1981 (Survey-Liber 4 of Surveys, Pages 499 and 500) Charles S. Getz, P.S. 25843 -Fd Mon Box- See over for continuation of Section A.
- B. Description of corner evidence found and/or method applied in restoring or reestablishing corner:
Found Boat Spike in Monument Box.
Accepted Boat Spike as marking original corner.

- C. Description of monument for corner and accessories established to perpetuate locating the position of the corner:
Removed Boat Spike from Monument Box and Concreted 12" x 5/8" reinforcing with Standard Tuscola County Brass Cap stamped M7 T12N/R11E in Monument box
N60°E, 23.23'-Set 1/2" diameter reinforcing rod
S15°E, 36.31'-T.C. Re-mon. tag in Southwest face of 14" Double Trunk Cottonwood
S40°W, 38.60'-Chiseled '+' in top center of triangular concrete project marker
N25°W, 37.20'T.C. Re-mon. tag above Scott Engineering tag in Southwest face of Power Pole.

Signed by Lionel Roy Emery
Surveyor's Michigan License No. 24593

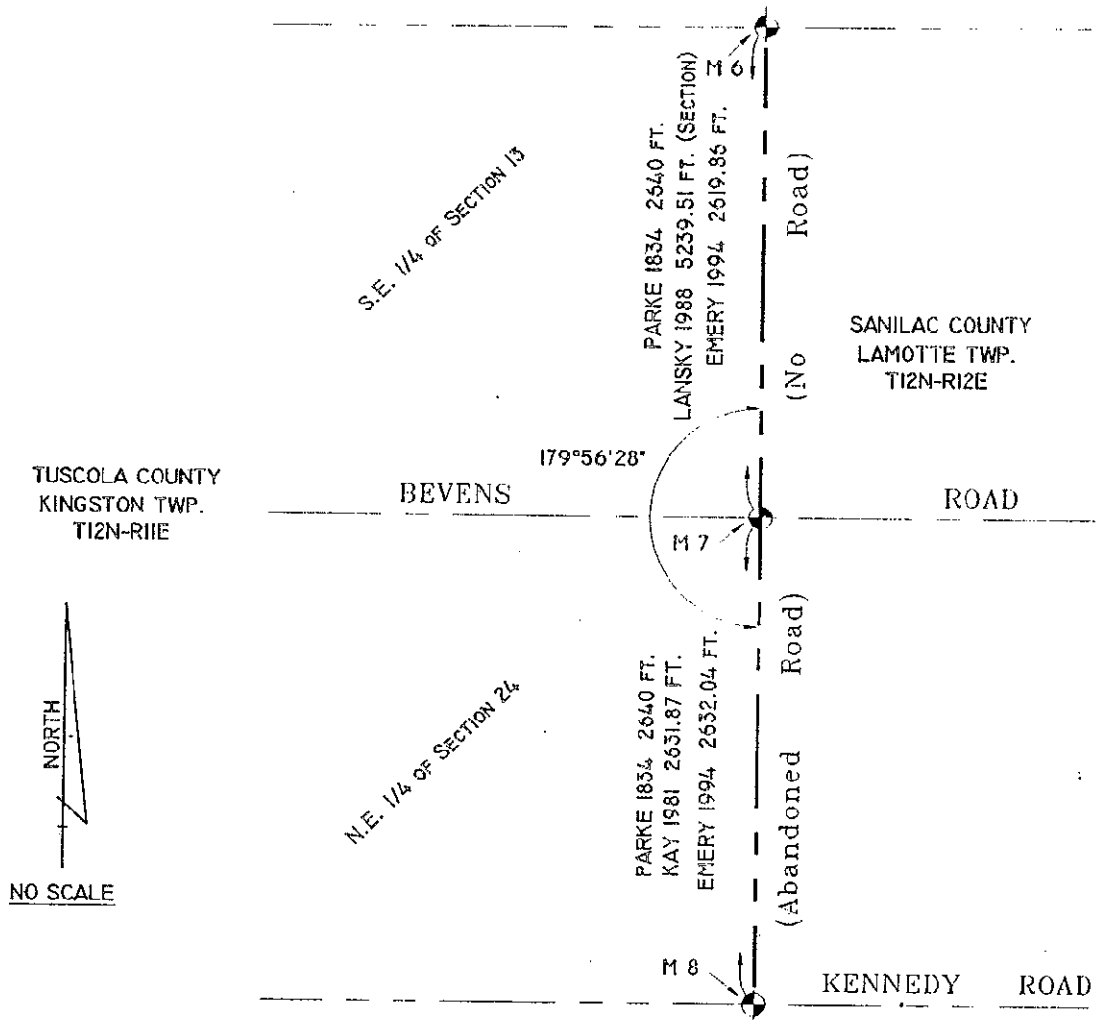
Date Oct 20, 1994

APPROVED
10-20-94



N30°W 37.26' P.P.; S30°W 38.25' R/W Monument; N80°W 107.93' W. End of Culvert
 1988 (Survey, Liber 581, Page 207-Tuscola County) John R. Lansky, P.S. 18659 -Boat Spike in
 Monument Box--does not say whether found or set--N.W. 37.2' Fnd P.K. nail & cap in D.E. Pol
 S.W. 38.6' to center of triangular con. mkr.; S.E. 59.7' set spike/cap in 12" Poplar
 1988 (Land Corner Certificate--Tuscola County) John R. Lansky, P.S. 18659 -Found Boat Spike in
 Monument Box- accessories same as above Survey.

COPY



COPY