

1996

1996 REMONUMENTATION PROGRAM

COMMISSION

LAND CORNER RECORDATION CERTIFICATE  
Filing Requirement of Act 74, Mich. P.A. 1970

For corners in Gilford Township

TUSCOLA

(County)

Located In:

Corner Code #

1. Public Land Survey

T13N R7E  
T12N R7E  
T13N R8E  
T12N R8E

M-13  
M-1  
A-13  
A-1

2. Property Controlling in Section

S \_\_\_ T \_\_\_ R \_\_\_  
S \_\_\_ T \_\_\_ R \_\_\_  
S \_\_\_ T \_\_\_ R \_\_\_  
S \_\_\_ T \_\_\_ R \_\_\_

3. Miscellaneous Property in Sec.

4. Lot No. \_\_\_\_\_, Recorded Plat \_\_\_\_\_  
5. Private Claims \_\_\_\_\_

RECEIVED FOR RECORD  
LIBER NO. \_\_\_\_\_ PAGE NO. 17  
SERIAL NO. Gilford  
95 OCT 31 AM 10:40  
TUSCOLA COUNTY  
REGISTER OF DEEDS

Register of Deeds Stamp & File Number

I, Kenneth D. Dunton, in a field survey on Oct. 21, 1995 do hereby state that under requirements of P.A. 74, Michigan P.A. of 1970, the corner points mentioned in lines 1 and 2 above were in conformance with regulations and rules therefore as required in the current manual of survey instructions of the United States Department of the Interior, Bureau of Land Management or by a decree of a Court of Law and/or that the corner points mentioned in lines 3, 4 and 5 above were in conformance with the rules of the Michigan Board of Land Surveyors or by a Decree of a Court of Law; established, re-established, monumented, recovered, found as expressed below:

A	B	C	D	E	F	G	H	I	J	K	L	M
1												
2	6		5		4		3		2		1	
3												
4	7		8		9		10		11		12	
5												
6	10		17		16		15		14		13	
7												
8	19		20		21		22		23		24	
9												
10	30		29		28		27		26		25	
11												
12	31		32		33		34		35		36	
13												

NOTE: Not more than 2 corners, all in the same town and range, may be recorded on this certificate.

A. Description of original monument and accessories and/or subsequent restoration:

Corner M-1, T12N-R7E  
1834 G.L.O. Notes  
Orange Risdon, D.S.  
Intersected town line  
38.87 ch. (2565.42')  
west of 1/4 section  
corner.  
W. Oak 14 N43W 33L  
Beech 12 S54E 52L  
Elm 10 N23E 4L

Dec. 8, 1975 L.C.R.C. form filed by James A. Beck, LS 21559. Fnd. 1/2" rod. N40°W 47.80' RLS 11192 tag in TP. N45°E 49.19' road sign post; S45°W 45.00' "T" iron; West 0.5' centerline road. Filed page 23, Fairgrove Twp.

Section A continued on back of form.

B. Description of corner evidence found and/or method applied in restoring or reestablishing corner:

Found 5/8" rod in place, also found 1 1/4" x 36" pipe below 5/8" rod and remains of wood post and rocks. Accepted 5/8" rod as the proper position of Corner M-13.

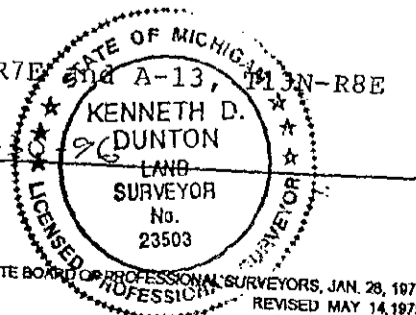
C. Description of monument for corner and accessories established to perpetuate locating the position of the corner:

Removed 5/8" rod, 1 1/4" pipe and wood post. Placed concrete monument with standard brass cap stamped Corner M-1, T12N-R7E. Placed monument box over monument. Set Nov. 18, 1995. S51°40'W 25.60' chiseled "+" atop West end 50' of 30" C.S.P. N30°19'W 65.21' fnd. "+" chiseled atop large rock (24" x 30"+). N48°29'E 147.45' SW cor. brick face house #493. N49°E 67.0' center 12" pine. S58°24'E 34.78' chiseled notch atop East end 50' of 30" C.S.P.

Note: This corner is common with corners M-1, T12N-R7E and A-13, T13N-R8E.

Signed by [Signature]  
Surveyor's Michigan License No. 23503

Date 10-30-96



APPROVED  
10-30-96  
[Signatures]

FORM APPROVED BY MICHIGAN STATE BOARD OF PROFESSIONAL SURVEYORS, JAN. 28, 1971  
REVISED MAY 14, 1975  
REVISED JAN. 1983  
REVISED OCT., 1995

COPY

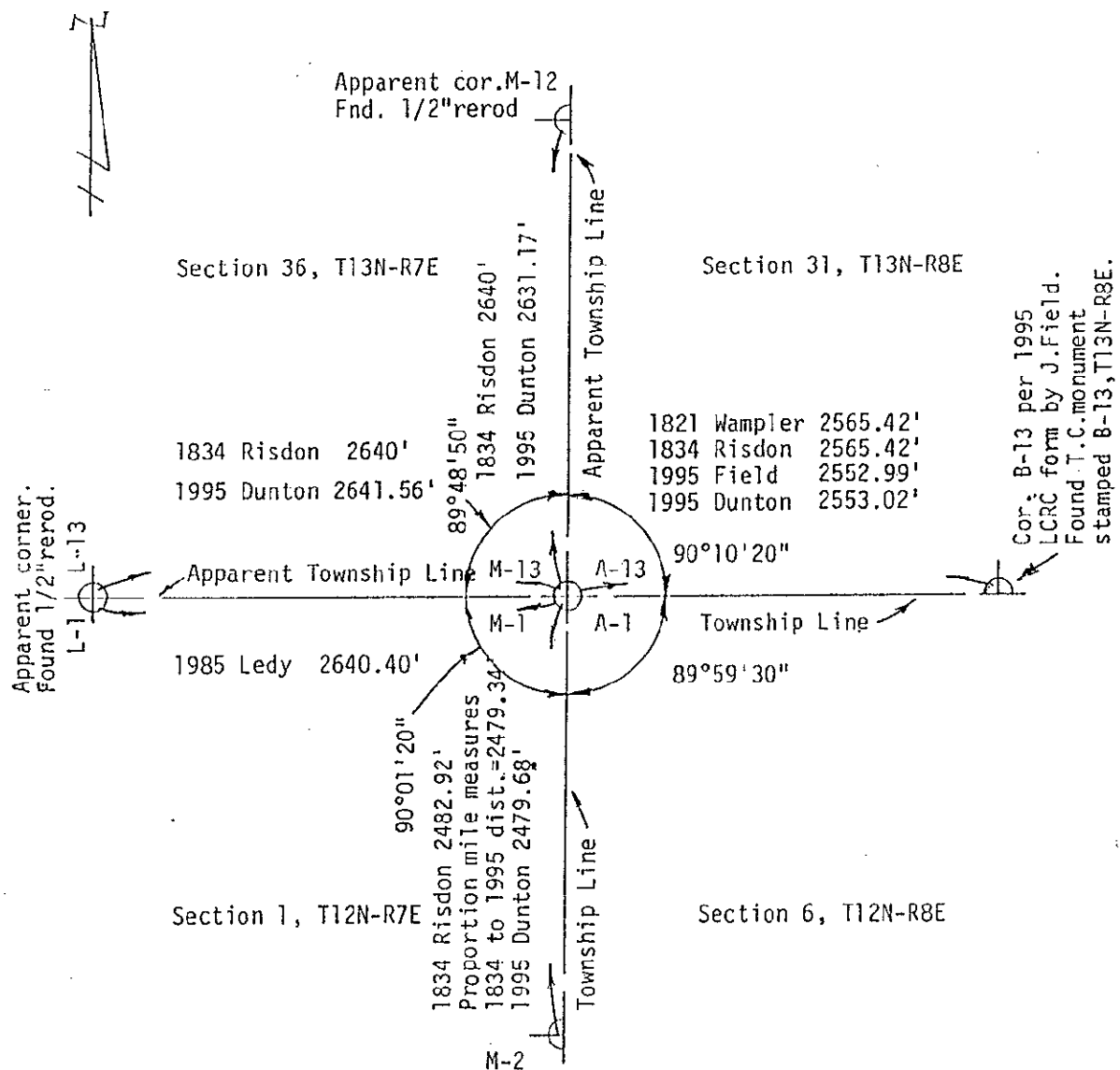
Section A continued:

Feb. 23, 1983 Act 74 form filed by Richard R. Boldt, L.S. #28405, on Page 45 Juniata Township. Fnd. 5/8" re-rod. N25°W 65.35' chis. "X" on top large rock, S45°W 25.70' chis. "X" on W. end 26" C.M.P., N50°E 40.09 chis. "X" on road sign post, N45°E 147.42' SW cor. brick face house. Note: This corner is common to Sec. 1 Denmark NE cor; SE. cor. Sec. 36 Gilford Township and Sec. 31, Fairgrove Twp. SW cor.

Feb. 24, 1983 Survey by R. Boldt, L.S. #28405, recorded in Liber. 540, Page 08, Tuscola County Records. No mention of object found or set. Accessories same as Act 74, Page 45 except corner house not used & no note of common corner with adjoining townships.

Aug. 27, 1985 Survey by Duane F. Ledy, R.L.S. #21575, recorded in Liber 552, Page 1404, Tuscola County Records. 1/2" rebar. SE 25.70' to top 30" ctr. C.M.P., NE 40.05' to rd. sign post, SW 26.00' to top 30" C.M.P.

Dec. 2, 1988 Survey by Stephan J. Szyszkoski, L.S. #33986 with Rowe Engineering, Inc., recorded in Liber 588 on Page 871, Tuscola County Records. Fnd. 5/8" re-rod. N25°W 65.21' fnd. chis. "X" on top large rock, S45°W 25.70' fnd. chis. "X" on W. end 26" C.M.P., N45°E 147.42' SW cor. brick face to house #493, S45°E 22.63' set 1/2" rod w/cap 33986 at edge asphalt.



COPY