

LAND CORNER RECORDATION CERTIFICATE

Filing Requirement of Act 74, Mich. P.A. 1970
1995 REMONUMENTATION PROGRAM

For corners in FAIRGROVE TWP.

<u>TUSCOLA</u> (County)	Located In:	Corner Code #
1. Public Land Survey	T 13N R 08E	D-13
	T R	
	T R	
	T R	
2. Property Controlling in Section	S T R	
	S T R	
3. Miscellaneous Property in Sec.	S T R	
	S T R	

4. Lot No. _____, Recorded Plat _____
5. Private Claims _____

RECEIVED FOR RECORD
LIBER NO. _____ PAGE NO. _____
FILING NO. # 71
FAIRGROVE TWP.
95 NOV 15 PM 3:28
VIRGINIA H. HILLMAN
TUSCOLA COUNTY
REGISTER OF DEEDS

Register of Deeds Stamp & File Number

I, JONATHAN M. FIELD, in a field survey on SEPTEMBER 28 19 95

do hereby certify that under requirements of P.A. 74, Michigan P.A. of 1970, the corner points mentioned in lines 1 and 2 above were in conformance with regulations and rules therefore as required in the current manual of survey instructions of the United States Department of the Interior, Bureau of Land Management or by a decree of a Court of Law and/or that the corner points mentioned in lines 3, 4 and 5 above were in conformance with the rules of the Michigan Board of Land Surveyors or by a Decree of a Court of Law, established, re-established, monumented, re-monumented, recovered, found as expressed below:

NOTE: Not more than 4 corners, all in the same town and range, may be recorded on this certificate.

1	A	B	C	D	E	F	G	H	I	J	K	L	M
2	6	5	4	3	2	1							
3													
4	7	8	9	10	11	12							
5													
6	18	17	16	15	14	13							
7													
8	19	20	21	22	23	24							
9													
10	30	29	28	27	26	25							
11													
12	31	32	33	34	35	36							
13													

A. Description of original monument and accessories and/or subsequent restoration:

1821 GLO; WAMPLER, D.S.; SET POST; BEECH 9 S24E 7LKS., SUGAR 8 N13 1/2W 24LKS.
1978 ROWE, P.S.#11192; LCRC PG.38; FND POINTED STONE ON LINE W/ OCCUPATION TO NORTH; WEST 154.30' 2 1/4" PIPE AT N1/4 COR. SEC.5 T12N-R8E, NORTH 64.40' TAG #11192 IN 6" OAK CLUMP

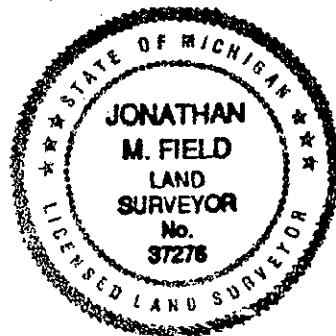
B. Description of corner evidence found and/or method applied in restoring or reestablishing corner:

1995 ROWE ENG.; FIELD, P.S.#37276; FND POINTED STONE W/ CHIS. + ON TOP 1'S. OF C/L GRAVEL ROAD E-W & ON LINE W/ FIELD DIVISION LINE TO N.; RECOVERED 1 PREV. WIT INDICATING THAT FND STONE IS IN SAME POSITION AS 1978 STONE CITED ABOVE

ACCEPTED FND. STONE AS BEST EVIDENCE OF ORIGINAL CORNER POSITION

C. Description of monument for corner and accessories established to perpetuate locating the position of the corner:

D-13 REPLACED FND STONE W/ STANDARD REMON MONUMENT STAMPED CAP D13 T13N R8E
WEST, 154.40' FND. 2 1/4" PIPE
S60°E, 24.30' CENTER OF GAS PIPELINE MARKER POST
N60°E, 25.57' CENTER OF GAS PIPELINE MARKER POST
N50°W, 20.11' SET 1/2" ROD W/CAP #37276
S50°W, 16.51' SET 1/2" ROD W/CAP #37276



Signed by Jonathan M. Field
Surveyor's Michigan License No. 37276

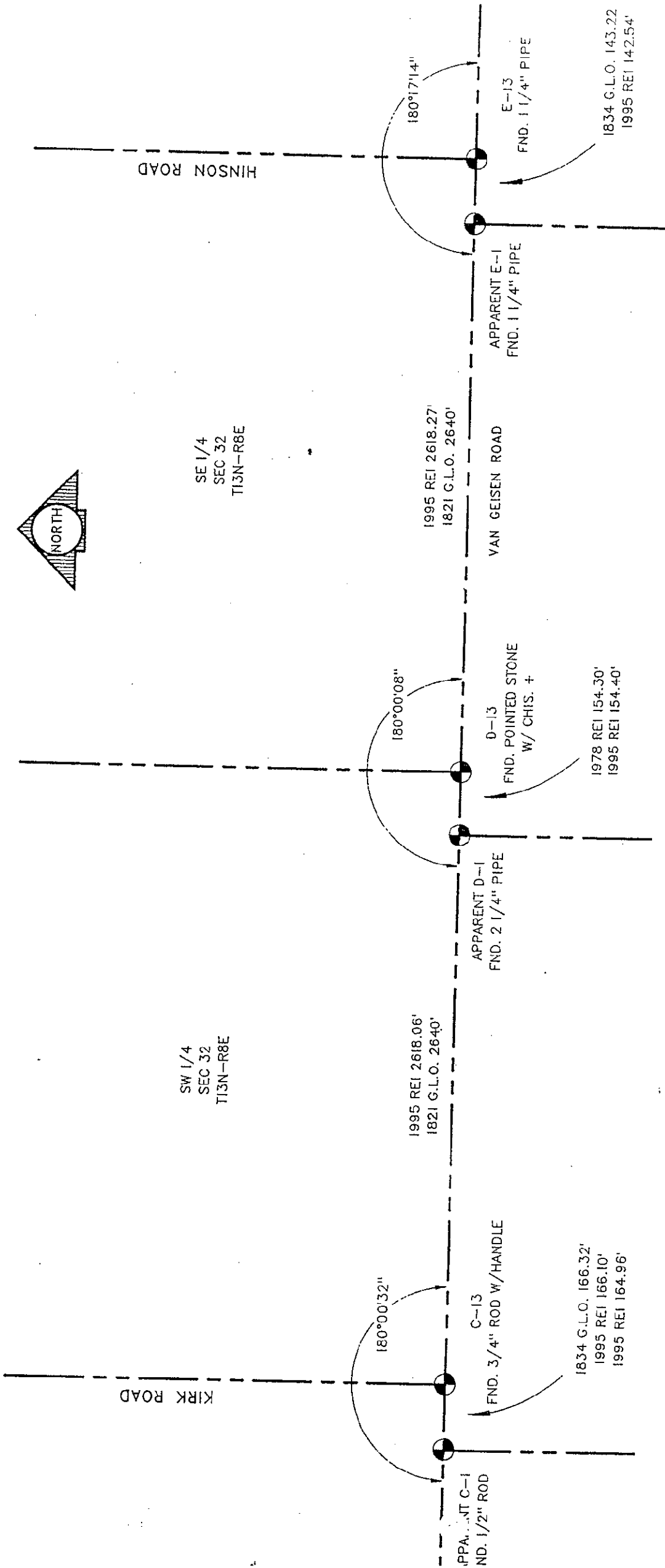
Date 11-15-95

APPROVED
11-6-95
[Signature]

FORM APPROVED BY MICHIGAN STATE BOARD OF LAND SURVEYORS, JAN. 28, 1971
REVISED MAY 14, 1975
REVISED JAN., 1983
ADAPTED FOR WORD PROCESSING MARCH, 1993

DEC 6 1995
COMMISSION

COPY



SW 1/4
SEC 32
T13N-R8E

SE 1/4
SEC 32
T13N-R8E

KIRK ROAD

C-13
FND. 3/4" ROD W/HANDLE

1834 G.L.O. 166.32'
1995 REI 166.10'
1995 REI 164.96'

1995 REI 2618.06'
1821 G.L.O. 2640'

APPARENT D-1
FND. 2 1/4" PIPE

180°00'08"

D-13
FND. POINTED STONE
W/ CHIS. +

1978 REI 154.30'
1995 REI 154.40'

VAN GEISEN ROAD

1995 REI 2618.27'
1821 G.L.O. 2640'

APPARENT E-1
FND. 1 1/4" PIPE

180°17'14"

E-13
FND. 1 1/4" PIPE

1834 G.L.O. 143.22'
1995 REI 142.54'

HINSON ROAD

APPARENT C-1
FND. 1/2" ROD