

MAR 02 1999

1998 REMONUMENTATION PROGRAM

SECTION

LAND CORNER RECORDATION CERTIFICATE
Filing Requirement of Act 74, Mich. P.A. 1970

For corners in Ellington Township

Tuscola
(County)

Located In:

Corner Code #

1. Public Land Survey		T13N R 10E	A-2
		T R	
		T R	
		T R	
2. Property Controlling in Section	S	T R	
	S	T R	
3. Miscellaneous Property in Sec.	S	T R	
	S	T R	

RECEIVED FOR RECORD
LIBER NO. _____ PAGE NO. # 74
FILE NO. ELLINGTON TWP.
98 NOV 30 PM 4:00
TUSCOLA COUNTY
REGISTER OF DEEDS
Opportunity

Register of Deeds Stamp & File Number

4. Lot No. _____, Recorded Plat _____
5. Private Claims _____

I, Kenneth D. Dunton, in a field survey on June 7, 1998 do hereby state that under requirements of P.A. 74, Michigan P.A. of 1970, the corner points mentioned in lines 1 and 2 above were in conformance with regulations and rules therefore as required in the current manual of survey instructions of the United States Department of the Interior, Bureau of Land Management or by a decree of a Court of Law and /or that the corner points mentioned in lines 3, 4 and 5 above were in conformance with the rules of the Michigan Board of Land Surveyors or by a Decree of a Court of Law, established, re-established, monumented, recovered, found as expressed below:

NOTE: Not more than 2 corners, all in the same town and range, may be recorded on this certificate.

1	A	B	C	D	E	F	G	H	I	J	K	L	M
2	6		5		4		3		2		1		
3													
4	7		8		9		10		11		12		
5													
6	18		17		16		15		14		13		
7													
8	19		20		21		22		23		24		
9													
10	30		29		28		27		26		25		
11													
12	31		32		33		34		35		36		
13													

A. Description of original monument and accessories and/or subsequent restoration:

G.L.O. notes Dec. 28, 1834 by H. Parke, D.S., set 1/4 section post, Hemlock 18" S20°W 15 links, Hemlock 5" N60 1/2°W 25 links.

B. Description of corner evidence found and/or method applied in restoring or reestablishing corner:

Found 1/2" iron rod in mon. box and accepted found rod as the best evidence of the original corner.

Corner A-2, T13N-R10E is common with Corner M-2, T13N-R9E.

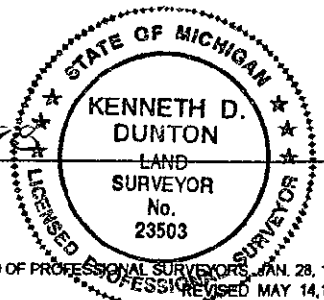
C. Description of monument for corner and accessories established to perpetuate locating the position of the corner:

Drove 1/2" rod down and placed 1" I.D. pipe & 5/8" re-rod with 2" brass cap over 1/2" iron. Stamped brass cap M-2, T13N-R9E and encased cap, rod & pipe in concrete in mon. box.
N20°W 116.22' set T.C. Remon. tag & spike in E. face p. pole.
S35°W 60.65' set T.C. Remon. tag & spike in NW face p. pole.
West 43.87' set T. C. Remon. tag & spike in N. face 5" White Cedar.
N30°E 51.40' set T. C. Remon. tag & spike in NW face 12" White Cedar.

Signed by [Signature]
Surveyor's Michigan License No. 23503

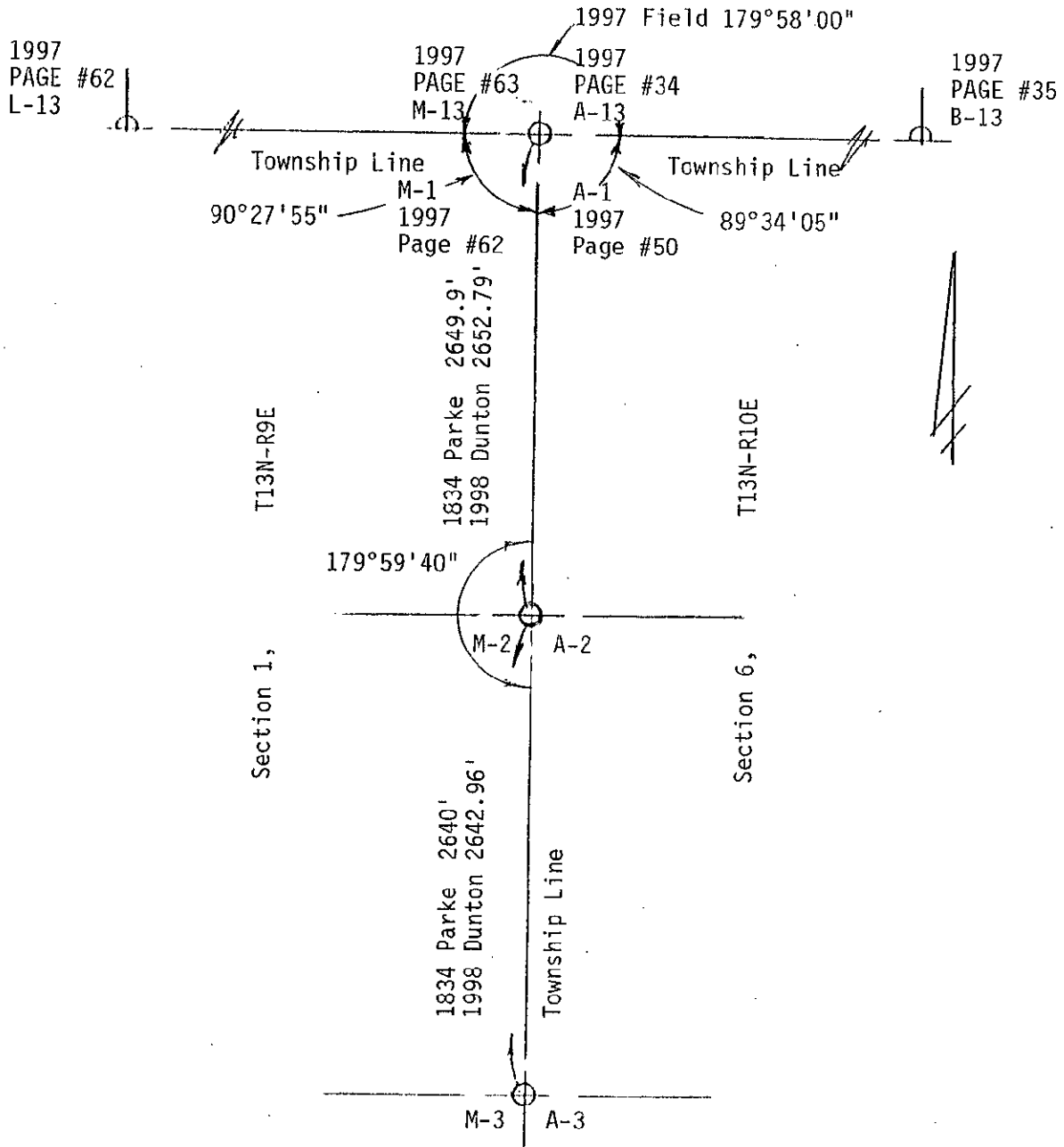
Date 11-25-98

APPROVED
11-25-98
J.P.E.
R.B.
J.M.A.



Section 36, T14N-R9E

Section 31, T14N-R10E



SURVEY &
REMONUMENTATION

MAR 02 1999

SECTION