

MAR 02 1999

RECEIVED FOR RECORD. LIBER NO. PAGE NO. #61 FILE NO. ELLINGTON TWP 98 NOV 30 PM 1:33

SECTION

1998 REMONUMENTATION PROGRAM LAND CORNER RECORDATION CERTIFICATE Filing Requirement of Act 74, Mich. P.A. 1970

For corners in ELLINGTON TOWNSHIP

Table with columns: TUSCOLA (County), Located In, Corner Code #. Rows include Public Land Survey, Property Controlling in Section, and Miscellaneous Property in Sec.

Signature of Arroyo... TUSCOLA COUNTY REGISTER OF DEEDS

Register of Deeds Stamp & File Number

4. Lot No. , Recorded Plat 5. Private Claims

I, LIONEL ROY EMERY, in a field survey on JULY 8, 19 98 do hereby state that under requirements of P.A. 74, Michigan P.A. of 1970, the corner points mentioned in lines 1 and 2 above were in conformance with regulations and rules therefore as required in the current manual of survey instructions of the United States Department of the Interior, Bureau of Land Management or by a decree of a Court of Law and /or that the corner points mentioned in lines 3, 4 and 5 above were in conformance with the rules of the Michigan Board of Land Surveyors or by a Decree of a Court of Law, established, re-established, monumented, recovered, found as expressed below.

NOTE: Not more than 2 corners, all in the same town and range, may be recorded on this certificate.

Grid table with columns A-M and rows 1-13. Cell (4,12) contains a dot.

A. Description of original monument and accessories and/or subsequent restoration: 1834 GLO NOTES PG. 270; HERVEY PARKE, DEP. SUR. SET QR. SEC. POST; HEMLOCK 15 N15W 49; BEECH 9 S33W 27 1971 RECORD SURVEY (L. 1 OF SURVEYS, PAGES 122-123) BY: STEWART G. CASE P.S. 15399; FOUND 1 1/2" STEEL PIPE; WEST, 24.7' STEEL ANCHOR POST; EAST 26.5' WOOD ANCHOR POST 1972 RECORD SURVEY (L. 2 OF SURVEYS, PAGES 162-163) BY: ROBERT G. KAY P.S. 14096; (NO OBJECT STATED); WEST 33.5' GUY POLE; EAST 24.7' FENCE POST; S50°W 32.6' 18" ASH 1973 SURVEY OF DODGE ROAD (PLAN ON FILE AT TUSCOLA COUNTY ROAD COMM. OFFICES) BY: SCOTT ENGINEERING, ALPENA, MI; FOUND 3/8" BAR; S80°W 106.22' 20" APPLE; EAST 34.04' TEL POLE

B. Description of corner evidence found and/or method applied in restoring or reestablishing corner: FOUND 3/4 IN. I.D. PIPE, PLOW SHARE, AND 18 IN. SECTION OF WELL POINT DRIVEN THRU WOOD POST TOGETHER WITH MEASURED DEFLECTION AND 1/2 MILE MEASUREMENTS TO SECTION CORNERS NORTH AND SOUTH CONFIRM FOUND PIPE TO BE IN SAME POSITION AS 3/8 IN. BAR IN 1973 SURVEY OF DODGE ROAD SURVEY AND 1 1/2 PIPE IN 1971 SURVEY ABOVE.

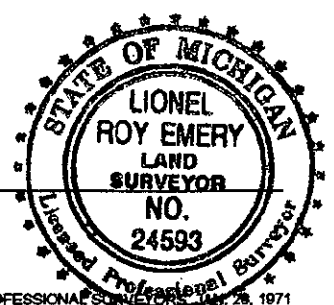
ACCEPTED POSITION OF FOUND PIPE TO BE A CAREFUL AND FAITHFUL PERPETUATION OF ORIGINAL GOVERNMENT CORNER.

C. Description of monument for corner and accessories established to perpetuate locating the position of the corner: REMOVED FOUND PIPE AND MISCELLANEOUS ITEMS AND REPLACED WITH STANDARD TUSCOLA COUNTY CONCRETE MONUMENT WITH 2 IN. DIA. BRASS CAP STAMPED M4 T13N R10E. N25°E, 50.97 FT. SET 1/2 IN. DIA. RE-ROD IN GRASS SHOULDER. S85°E, 34.11 FT. SET T.C. RE-MON TAG OVER FOUND NAIL IN SOUTH FACE OF TELEPHONE PEDESTAL SUPPORT POST. S38°W, 61.20 FT. SET T.C. RE-MON TAG IN SOUTHEAST FACE OF 12 IN. DIA. APPLE TREE. S86°W, 49.08 FT. SET T.C. RE-MON. TAG OVER FOUND NAIL IN SOUTH FACE OF POWER POLE. S85°E, 26.87 FT. FOUND NAIL IN FENCE POST.

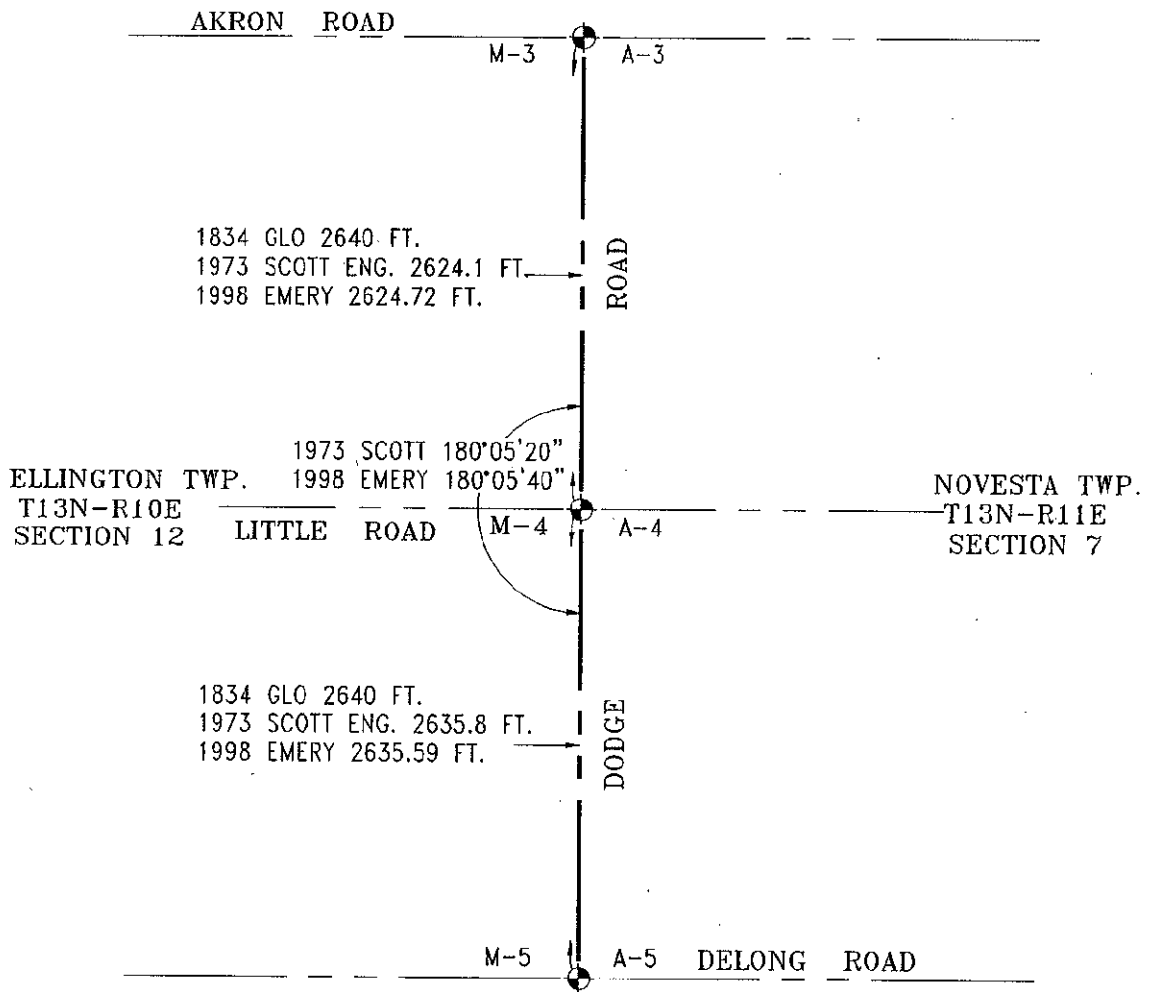
NOTE: THIS CORNER IS COMMON WITH CORNER A 4 T13N R11E (NOVESTA TOWNSHIP)

Signed by Lionel Roy Emery Surveyor's Michigan License No. 24593

Date NOVEMBER 30, 1998



APPROVED 11-4-98 [Signatures]



SURVEY &  
REMONUMENTATION

MAR 02 1999

SECTION