

SURVEY & REMONUMENTATION

MAR 02 1999

SECTION

For corners in ELLINGTON TOWNSHIP

**1998 REMONUMENTATION PROGRAM
LAND CORNER RECORDATION CERTIFICATE
Filing Requirement of Act 74, Mich. P.A. 1970**

RECEIVED FOR RECORD
LIBER NO. _____ PAGE NO. #53
FILE NO. ELLINGTON TWP

98 NOV 30 PM 1:27

George M. Emery

TUSCOLA COUNTY
REGISTER OF DEEDS

Register of Deeds Stamp & File Number

TUSCOLA (County)	Located in:	Corner Code #
1. Public Land Survey	T <u>13N</u> R <u>10E</u>	M-12
	T _____ R _____	_____
	T _____ R _____	_____
	T _____ R _____	_____
2. Property Controlling in Section	S _____ T _____ R _____	_____
	S _____ T _____ R _____	_____
3. Miscellaneous Property in Sec.	S _____ T _____ R _____	_____
	S _____ T _____ R _____	_____

4. Lot No. _____, Recorded Plat _____
5. Private Claims _____

I, LIONEL ROY EMERY, in a field survey on JULY 5, 1998 do hereby state that under requirements of P.A. 74, Michigan P.A. of 1970, the corner points mentioned in lines 1 and 2 above were in conformance with regulations and rules therefore as required in the current manual of survey instructions of the United States Department of the Interior, Bureau of Land Management or by a decree of a Court of Law and/or that the corner points mentioned in lines 3, 4 and 5 above were in conformance with the rules of the Michigan Board of Land Surveyors or by a Decree of a Court of Law, established, re-established, monumented, recovered, found as expressed below.

NOTE: Not more than 2 corners, all in the same town and range, may be recorded on this certificate.

	A	B	C	D	E	F	G	H	I	J	K	L	M
1													
2	6		5		4		3		2		1		
3													
4	7		8		9		10		11		12		
5													
6	18		17		16		15		14		13		
7													
8	19		20		21		22		23		24		
9													
10	30		29		28		27		26		25		
11													
12	31		32		33		34		35		36		
13													

A. Description of original monument and accessories and/or subsequent restoration:
1834 GLO NOTES PG. 268; HERVEY PARKE, DEP. SUR. SET QR. SEC. POST; CEDAR 8 N5 1/2W 7, CEDAR 14 S52W 7 1/2
1974 RECORDED SURVEY (L. 445, PG. 732) BY: ROBERT G. KAY P.S. 14096 5/8" IRON IN WOOD STAKE; WEST 23.77' TAB
IN FENCE POST; S70°W 30.80 FT. TAB IN 4" POPLAR; S40°W 49.20' TAB IN 6" POPLAR
1975 RECORDED SURVEY (L. 450, PG. 473) BY: ROBERT G. KAY P.S. 14096 3/8" ROD; WEST 23.78' FENCE POST; S30°W
49.27' FLAGGED NAIL IN 5" POPPLE; S70°W 30.81' FLAGGED NAIL IN 3" POPPLE

B. Description of corner evidence found and/or method applied in restoring or reestablishing corner:
RECOVERED CORNER POSITION FROM DATA GIVEN ON KAY'S 1974 SURVEY, FOUND NOTHING AT CORNER--RECOVERED 2
ACCESSORIES AS SHOWN ON SURVEYS BY KAY.

ACCEPTED RECOVERED CORNER POSITION AS A CAREFUL AND FAITHFUL PERPETUATION OF ORIGINAL GOVERNMENT CORNER.

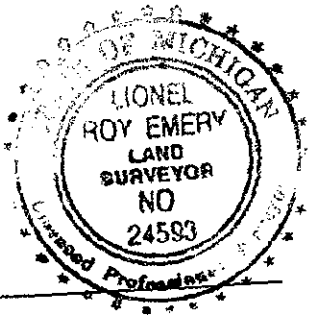
C. Description of monument for corner and accessories established to perpetuate locating the position of the corner:
SET STANDARD TUSCOLA COUNTY CONCRETE MONUMENT WITH 2 IN. DIA. BRASS CAP STAMPED M12 T13N R10E

- S82°E, 39.52 FT. SET T.C. RE-MON TAG OVER FOUND NAIL IN SOUTH FACE OF 5 IN. POPLAR
- S50°E, 34.38 FT. SET T.C. RE-MON TAG IN SW FACE OF 6 IN. POPLAR
- S30°W, 49.65 FT. SET T.C. RE-MON TAG OVER FOUND NAIL IN NW FACE OF 9 IN. POPLAR
- S60°W, 30.95 FT. SET T.C. RE-MON TAG OVER FOUND NAIL IN SE FACE OF 10 IN. POPLAR

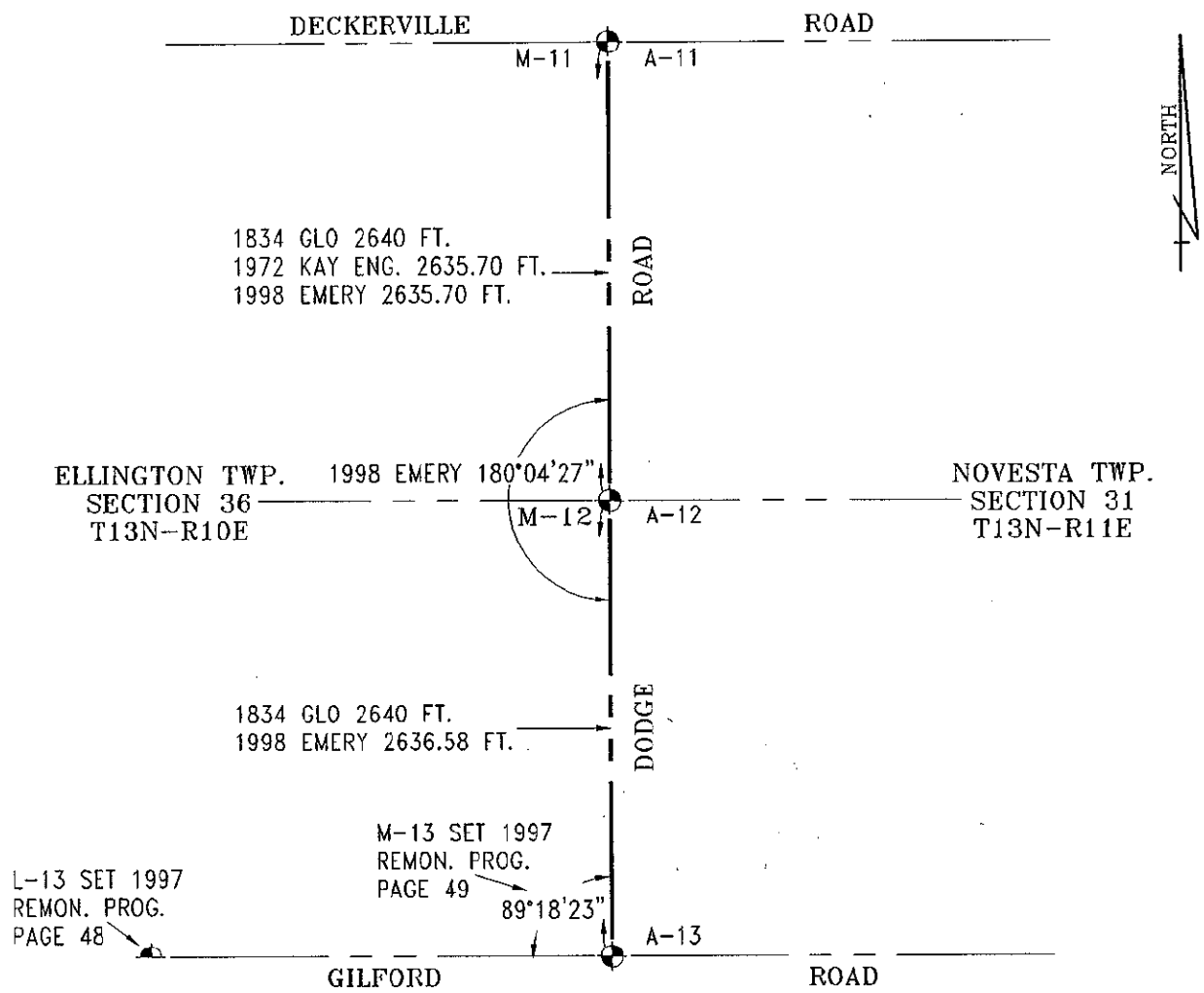
NOTE: THIS CORNER IS COMMON WITH CORNER A 12 T13N R11E (NOVESTA TOWNSHIP)

Signed by Lionel Roy Emery
Surveyor's Michigan License No. 24593

Date NOVEMBER 30, 1998



APPROVED
11-4-98
[Signature]



SURVEY &
REMONUMENTATION

MAR 02 1999

SECTION