

MAR 02 1999

RECEIVED FOR RECORD  
LIBER NO. \_\_\_\_\_ PAGE NO. #49  
FILE NO. NOVESTA TWP

SECTION

1998 REMONUMENTATION PROGRAM  
LAND CORNER RECORDATION CERTIFICATE  
Filing Requirement of Act 74, Mich. P.A. 1970

98 NOV 30 PM 1:34

For corners in NOVESTA TOWNSHIP

TUSCOLA

(County)

Located in:

Corner Code #

1. Public Land Survey

T 13N R 11E

A-10

T \_\_\_\_\_ R \_\_\_\_\_

T \_\_\_\_\_ R \_\_\_\_\_

T \_\_\_\_\_ R \_\_\_\_\_

2. Property Controlling in Section

S \_\_\_\_\_ T \_\_\_\_\_ R \_\_\_\_\_

S \_\_\_\_\_ T \_\_\_\_\_ R \_\_\_\_\_

3. Miscellaneous Property in Sec.

S \_\_\_\_\_ T \_\_\_\_\_ R \_\_\_\_\_

S \_\_\_\_\_ T \_\_\_\_\_ R \_\_\_\_\_

*Lionel Roy Emery*

TUSCOLA COUNTY  
REGISTERED OF DEEDS

Register of Deeds Stamp & File Number

4. Lot No. \_\_\_\_\_, Recorded Plat \_\_\_\_\_  
5. Private Claims \_\_\_\_\_

I, LIONEL ROY EMERY, in a field survey on JULY 7, 19 98 do hereby state that under requirements of P.A. 74, Michigan P.A. of 1970, the corner points mentioned in lines 1 and 2 above were in conformance with regulations and rules therefore as required in the current manual of survey instructions of the United States Department of the Interior, Bureau of Land Management or by a decree of a Court of Law and /or that the corner points mentioned in lines 3, 4 and 5 above were in conformance with the rules of the Michigan Board of Land Surveyors or by a Decree of a Court of Law, established, re-established, monumented, recovered, found as expressed below:

NOTE: Not more than 2 corners, all in the same town and range, may be recorded on this certificate.

	A	B	C	D	E	F	G	H	I	J	K	L	M
1													
2	6		5		4		3		2		1		
3													
4	7		8		9		10		11		12		
5													
6	18		17		16		15		14		13		
7													
8	19		20		21		22		23		24		
9													
10	30		29		28		27		26		25		
11													
12	31		32		33		34		35		36		
13													

A. Description of original monument and accessories and/or subsequent restoration:

1834 GLO NOTES PG. 269; HERVEY PARKE, DEP. SUR. SET QR. SEC. POST; MAPLE 16 N25W 20; CEDAR 10 S57W 40  
1973 SURVEY OF DODGE ROAD(PLAN ON FILE AT TUSCOLA COUNTY ROAD COMM. OFFICES) BY: SCOTT ENGINEERING, ALPENA, MI; 8 IN. POINTED STONE 18±" DEEP--SET 1/2" BAR & RLS CAP; WEST 43.68' 5" POPLAR; S30°E 67.78' PWR POLE  
1978 RECORDED SURVEY (L. 492, PGS. 550-551) BY: STEWART G. CASE P.S. 15399; FOUND 1/2" STEEL PIN WITH PLASTIC CAP; SPIKE NE SIDE P.P., S33°E 67.77'; SPIKE NORTH SIDE 7" POPLAR T., WEST 32.5'; 1/2" STEEL PIN, EAST 25.75'

B. Description of corner evidence found and/or method applied in restoring or reestablishing corner:

FOUND 1/2 IN. I.D. BY 38 IN. LONG IRON PIPE RAISING 1/2 IN. DIA. RE-ROD INSIDE 1 1/2 IN. I.D. THIN WALL PIPE MEASURED DEFLECTION ANGLE AND LINEAR MEASUREMENTS TO SECTION CORNERS NORTH AND SOUTH CONFIRM FOUND MARKER TO BE IN SAME POSITION AS 1973 SURVEY OF DODGE ROAD.

ACCEPTED FOUND PIPE AND RE-ROD AS A CAREFUL AND FAITHFUL PERPETUATION OF ORIGINAL GOVERNMENT CORNER.

C. Description of monument for corner and accessories established to perpetuate locating the position of the corner:

REMOVED FOUND PIPE AND IRON AND REPLACED WITH STANDARD TUSCOLA COUNTY CONCRETE MONUMENT WITH 2 IN. DIA. BRASS CAP STAMPED M10 T13N R10E.

S85°E, 71.48 FT. SET T.C. RE-MON TAG IN NORTH FACE OF 12 IN. MAPLE.  
S40°E, 67.70 FT. SET T.C. RE-MON TAG IN NORTHEAST FACE OF POWER POLE.  
S70°W, 55.36 FT. SET T.C. RE-MON TAG IN NORTHWEST FACE OF 4 IN. POPLAR.  
N40°W, 66.46 FT. FOUND SAW CUT IN TOP OF 54 IN. X 48 IN. CMP ARCH (SOUTH END).

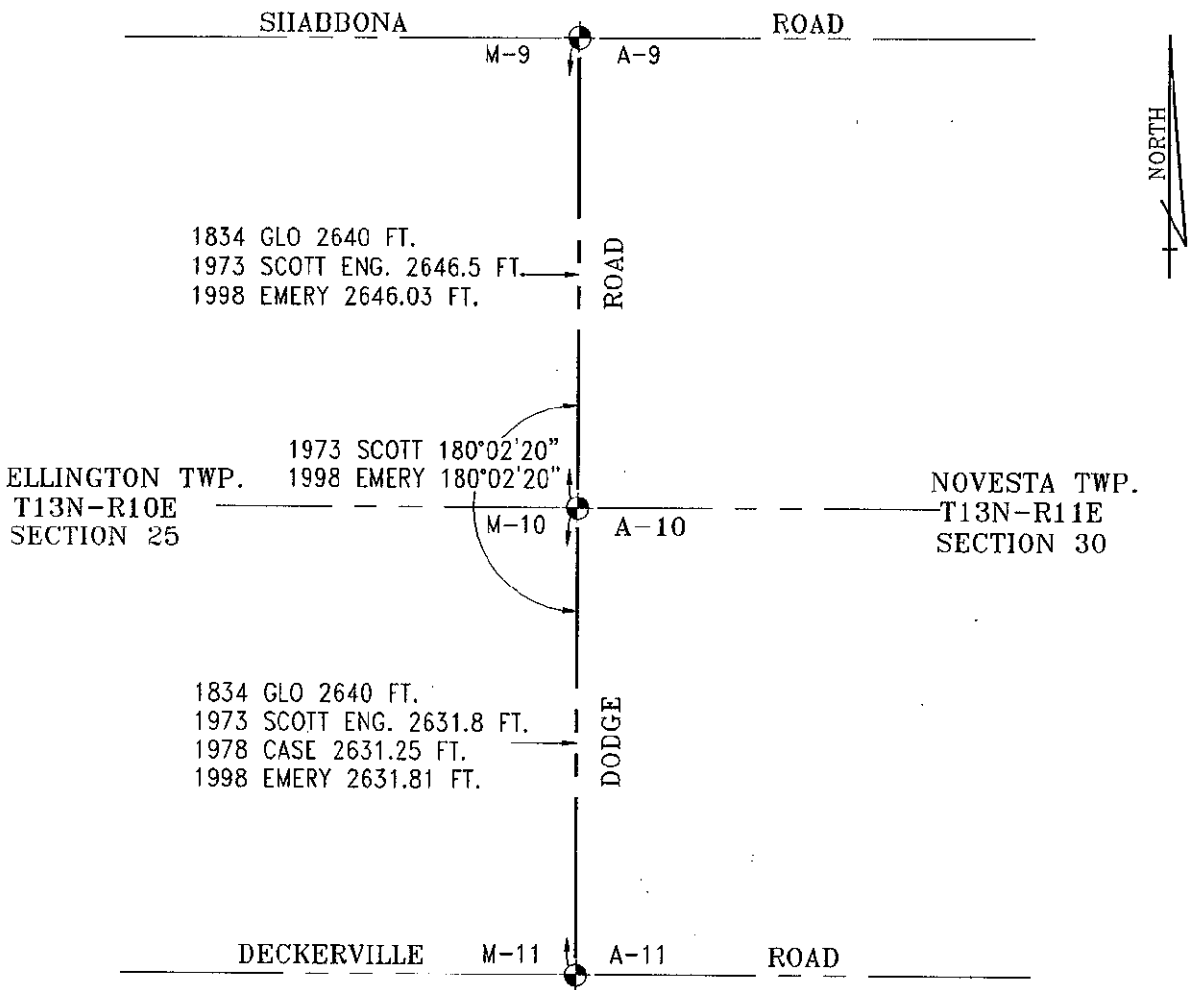


NOTE: THIS CORNER IS COMMON WITH CORNER M 10 T13N R10E (ELLINGTON TOWNSHIP)

Signed by Lionel Roy Emery  
Surveyor's Michigan License No. 24593

Date NOVEMBER 30, 1998

APPROVED  
11-9-98  
*[Signature]*



SURVEY &  
REMONUMENTATION

MAR 02 1999

SECTION

APR 1999