

**SURVEY & REMONUMENTATION**

MAR 02 1999

1998 REMONUMENTATION PROGRAM

**LAND CORNER RECORDATION CERTIFICATE**  
Filing Requirement of Act 74, Mich. P.A. 1970

**SECTION**

For corners in Novesta Township

<u>Tuscola</u> (County)	Located in:	Corner Code #
1. Public Land Survey	T13N R 11E	B-13
	T R	
	T R	
	T R	
2. Property Controlling in Section	S T R	
	S T R	
3. Miscellaneous Property in Sec.	S T R	
	S T R	

RECEIVED FOR RECORD  
LIBER NO. \_\_\_\_\_ PAGE NO. \_\_\_\_\_  
FILE NO. #58  
NOVESTA TWP.  
98 DEC 10 PM 4:11  
TUSCOLA COUNTY  
REGISTER OF DEEDS  
*Gregory M. Dunton*

Register of Deeds Stamp & File Number

4. Lot No. \_\_\_\_\_, Recorded Plat \_\_\_\_\_  
5. Private Claims \_\_\_\_\_

I, Kenneth D. Dunton, in a field survey on Aug. 16, 1998 do hereby state that under requirements of P.A. 74, Michigan P.A. of 1970, the corner points mentioned in lines 1 and 2 above were in conformance with regulations and rules therefore as required in the current manual of survey instructions of the United States Department of the Interior, Bureau of Land Management or by a decree of a Court of Law and/or that the corner points mentioned in lines 3, 4 and 5 above were in conformance with the rules of the Michigan Board of Land Surveyors or by a Decree of a Court of Law; established, re-established, monumented, recovered, found as expressed below:

NOTE: Not more than 2 corners, all in the same town and range, may be recorded on this certificate.

	A	B	C	D	E	F	G	H	I	J	K	L	M
1													
2	6	5	4	3	2	1							
3													
4	7	8	9	10	11	12							
5													
6	18	17	16	15	14	13							
7													
8	19	20	21	22	23	24							
9													
10	30	29	28	27	26	25							
11													
12	31	32	33	34	35	36							
13													

A. Description of original monument and accessories and/or subsequent restoration:  
G.L.O. Notes Nov. 20, 1834 by H. Parke, D.S., set 1/4 section post, Hemlock 11" N62°E 31 links, Cedar 12" N77°W 25 links.

B. Description of corner evidence found and/or method applied in restoring or reestablishing corner:  
Found nothing from large excavation at the occupied and proportional corner position. Established Corner B-13 on the township line and at distances proportional to those measured by H. Parke in 1834. Accepted this position as a careful and faithful re-establishment of the position of the original corner.

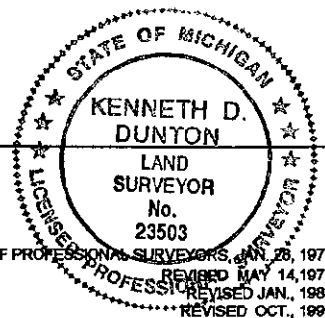
Note: The corner position of B-13 as established above falls on a tree line north which divides a woodlot to the east and an open field to the west.

C. Description of monument for corner and accessories established to perpetuate locating the position of the corner:  
Set standard monument stamped B-13, T13N-R11E. Placed circle of rocks & green glass around base of monument.  
N05°W 31.44' set T.C. Remon. tag & spike in SE cor. 4" x 4" wood sign post.  
N02°W 51.31' set T.C. Remon. tag & spike in E. face 5" Maple of maple clump.  
N50°E 50.58' set T. C. Remon. tag & spike in NW face 6" Maple.  
S10°W 23.20' set T. C. Remon. tag & spike in NE cor. 4" x 4" wood sign post.  
S89°W 27.80' fnd. 1/2" re-rod at apparent Corner B-1, T12N-R11E.

Signed by *Kenneth D. Dunton*  
Surveyor's Michigan License No. 23503

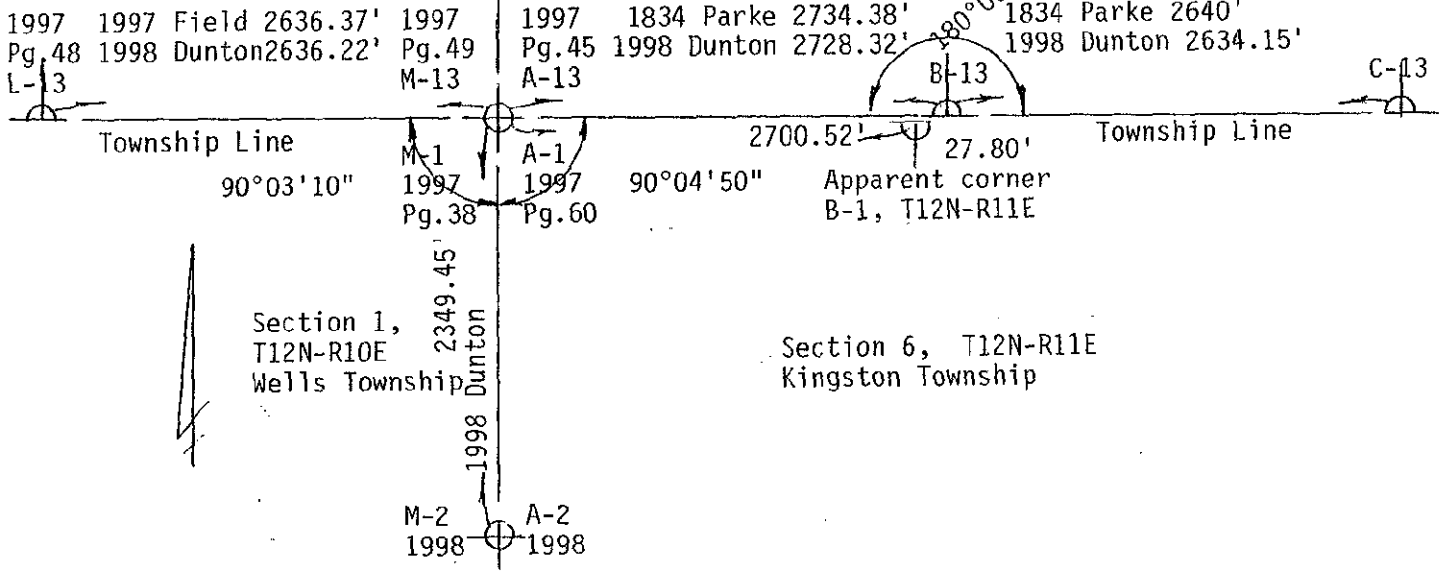
Date 12-2-98

APPROVED  
12-2-98  
*J.M.F.*  
*J.P.B.*  
*J.P.G.*



Section 36, T13N-R10E  
Ellington Township

Section 31, T13N-R11E  
Novesta Township



SURVEY &  
REMONUMENTATION

MAR 02 1999

SECTION