

SURVEY & REMONUMENTATION

MAR 02 1999

1998 REMONUMENTATION PROGRAM
LAND CORNER RECORDATION CERTIFICATE
 Filing Requirement of Act 74, Mich. P.A. 1970

RECEIVED FOR RECORD
 LIBER NO. _____ PAGE NO. _____
 FILE NO. #68
 NOVESTA TWP.
 98 DEC 10 PM 4:11
 TUSCOLA COUNTY
 REGISTER OF DEEDS

SECTION

For corners in Novesta Township

<u>Tuscola</u> (County)	Located In:	Corner Code #
1. Public Land Survey	T13N R 11E	F-13
	T _____ R _____	_____
	T _____ R _____	_____
	T _____ R _____	_____
2. Property Controlling in Section	S _____ T _____ R _____	_____
	S _____ T _____ R _____	_____
3. Miscellaneous Property in Sec.	S _____ T _____ R _____	_____
	S _____ T _____ R _____	_____

Register of Deeds Stamp & File Number

4. Lot No. _____, Recorded Plat _____
 5. Private Claims _____

I, Kenneth D. Dunton in a field survey on Aug. 22, 19 98 do hereby state that under requirements of P.A. 74, Michigan P.A. of 1970, the corner points mentioned in lines 1 and 2 above were in conformance with regulations and rules therefore as required in the current manual of survey instructions of the United States Department of the Interior, Bureau of Land Management or by a decree of a Court of Law and /or that the corner points mentioned in lines 3, 4 and 5 above were in conformance with the rules of the Michigan Board of Land Surveyors or by a Decree of a Court of Law; established, re-established, monumented, recovered, found as expressed below:

NOTE: Not more than 2 corners, all in the same town and range, may be recorded on this certificate.

	A	B	C	D	E	F	G	H	I	J	K	L	M
1													
2		6		5		4		3		2		1	
3													
4		7		8		9		10		11		12	
5													
6		18		17		16		15		14		13	
7													
8		19		20		21		22		23		24	
9													
10		30		29		28		27		26		25	
11													
12		31		32		33		34		35		36	
13													

A. Description of original monument and accessories and/or subsequent restoration:

G.L.O. Notes Nov. 20, 1834 by H. Parke, D.S., set 1/4 section post, Spruce 8" N23°E 6 links, Spruce 5" N69 1/2°W 20 links. (1/4 post by Parke is in swamp & 7 chains east of west edge of swamp)

B. Description of corner evidence found and/or method applied in restoring or reestablishing corner:

Found nothing. Unable to reach corner position due to swamp area & deep mud. Swamp area is barren and nothing is visible at the F-13 position from the shore line of the swamp. Established the F-13 corner position by the single proportion method and set a witness monument on the township line 2150.00' East of Corner E-13, T13N-R11E. Accepted proportional position as a careful and faithful re-establishment of the position of the original corner.

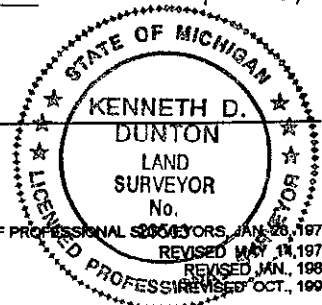
C. Description of monument for corner and accessories established to perpetuate locating the position of the corner:

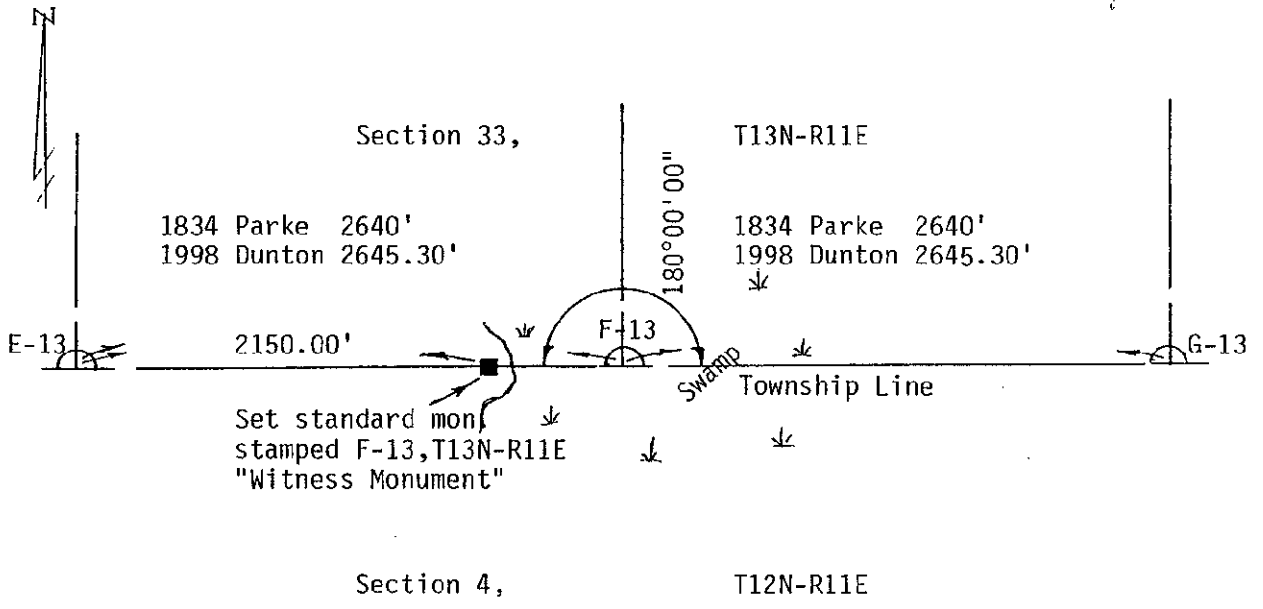
Set standard monument stamped F-13, T13N-R11E "witness monument" at 2150.00' East of Corner E-13, T13N-R11E. Accessories below are to "witness monument".
 N25°W 19.60' set T. C. Remon. tag & spike in E. face 12" Maple. (E. Maple of clump of 4).
 S10°E 11.25' set T. C. Remon. tag & spike in E. face 7" Maple (E. Maple of clump of 7).
 S65°W 27.21' set T. C. Remon. tag & spike in N. face 5" Maple.
 S70°E 12.21' set 1/2" x 18" re-rod.
 N89°30'W 361.35' set 1/2" x 18" re-rod north of "Y" in trail. (1/2" rod is not on Township line)
 North 17' ± centerline of E-W ditch.
 South 13' ± centerline of E-W ditch.
 East 30' ± W. edge of swamp. Set carsonite post 1' East of monument.

Signed by [Signature]
 Surveyor's Michigan License No. 23503

Date 12-2-98

APPROVED
12-2-98
 [Signatures]





SURVEY &
REMONUMENTATION

MAR 02 1999

SECTION