

MAR 02 1999

SECTION

1998 REMONUMENTATION PROGRAM
LAND CORNER RECORDATION CERTIFICATE
Filing Requirement of Act 74, Mich. P.A. 1970

For corners in Novesta Township

Tuscola
(County)

Located in:

Corner Code #

- 1. Public Land Survey T13NR11E I-13
T R
T R
T R
T R
- 2. Property Controlling in Section S T R
S T R
- 3. Miscellaneous Property in Sec. S T R
S T R

RECEIVED FOR RECORD
LIBER NO. _____ PAGE NO. _____
FILE NO. #165
NOVESTA TWP.
98 DEC 10 PM 4:12
Gregory Johnson
TUSCOGA COUNTY
REGISTER OF DEEDS

Register of Deeds Stamp & File Number

- 4. Lot No. _____, Recorded Plat _____
- 5. Private Claims _____

I, Kenneth D. Dunton, in a field survey on June 7, 1998 do hereby state that under requirements of P.A. 74, Michigan P.A. of 1970, the corner points mentioned in lines 1 and 2 above were in conformance with regulations and rules therefore as required in the current manual of survey instructions of the United States Department of the Interior, Bureau of Land Management or by a decree of a Court of Law and/or that the corner points mentioned in lines 3, 4 and 5 above were in conformance with the rules of the Michigan Board of Land Surveyors or by a Decree of a Court of Law; established, re-established, monumented, recovered, found as expressed below:

NOTE: Not more than 2 corners, all in the same town and range, may be recorded on this certificate.

A	B	C	D	E	F	G	H	I	J	K	L	M
1												
2	6	5	4	3	2	1						
3												
4	7	8	9	10	11	12						
5												
6	18	17	16	15	14	13						
7												
8	19	20	21	22	23	24						
9												
10	30	29	28	27	26	25						
11												
12	31	32	33	34	35	36						
13												

A. Description of original monument and accessories and/or subsequent restoration:

G.L.O. Notes Nov. 20, 1834 by H. Parke, D.S., set post corner Sections 34 & 35, Hemlock 18" N47 1/2°W 21 links, Hemlock 10" N86°E 38 links. T.C.R.C. witness card, date unknown, by Warren Leonard, Surveyor, found Ford axle with stones, Maple 16" SE 43 links (28.38'), Maple 18" SW 48 1/2 links (32.01'). May 26, 1972 Survey L-1, P-558 by David T. Rowe, P.S. #11192, re-set using road plan ties, "T" iron, S10°E 28.38' nail & cap in 16" Maple, S20°W 32.02' nail & cap in 18" Maple, N50°E 44.61' road sign post. June, 1972 L.C.R.C. Page 10 by David T. Rowe, P.S. #11192, same object and accessories as Survey L-1, P-558. Oct. 18, 1983 Survey L-536, P-1275 by Lionel Roy Emery, P.S. #24593, fnd. "T" iron, accessories same as L.C.R.C. Page 10.

Section A con't on back of form.

B. Description of corner evidence found and/or method applied in restoring or reestablishing corner:

Found "T" iron with cluster of small stones at original grade. Accepted "T" iron found as the best evidence of the original corner.

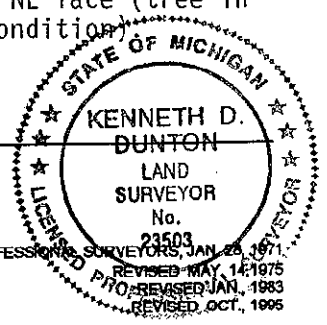
C. Description of monument for corner and accessories established to perpetuate locating the position of the corner:

Removed "T" iron and stones and perpetuated with standard monument stamped I-13, T13N-R11E. Replaced stones around base of monument along with brown glass.
N35°E 84.63' set T.C. Remon. tag & spike in NW face new P. Pole.
S25°W 28.17' set T.C. Remon. tag & spike in NW face new P. Pole.
S60°W 51.85' set T.C. Remon. tag & spike in N. face 20" Maple.
S40°W 32.3' N. face 24" stump.
S30°E 29.21' fnd. nail in N. face 24" Maple, set T.C. Remon. tag & spike in NE face (tree in very poor condition)
East 33.7' ± fnd. 1" square iron (bent) apparent Corner I-1, T12N-R11E.

Signed by *Kenneth D. Dunton*
Surveyor's Michigan License No. 23503

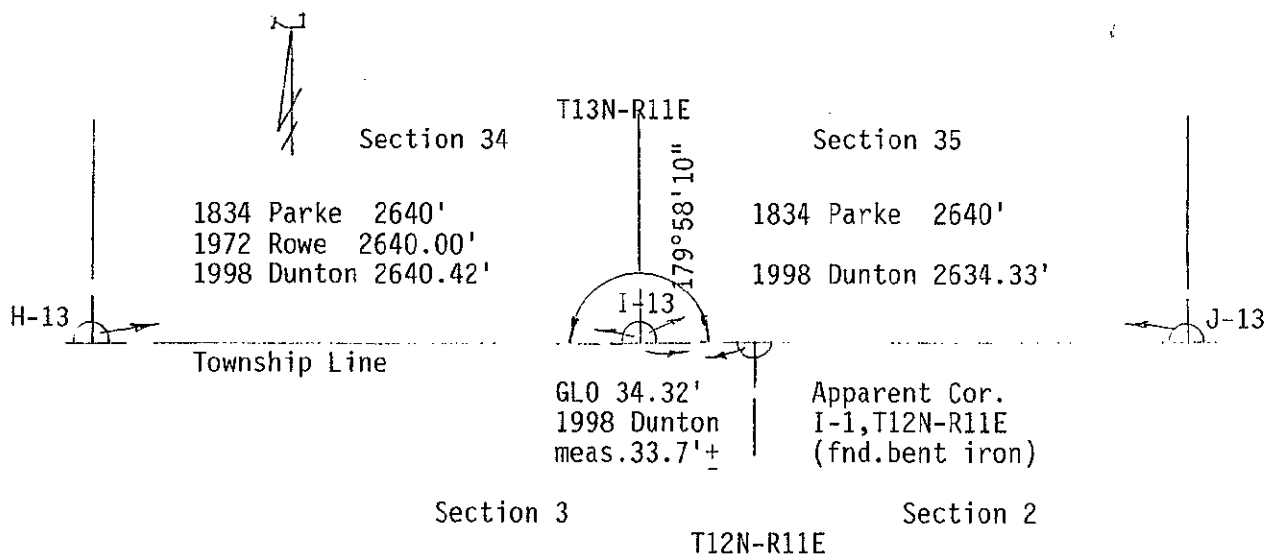
Date 12-2-98

APPROVED
12-2-98
J.M.T.
R.R.B.
A.B.E.



Section A Con't.

October 18, 1989 L.C.R.C. Page 28 by Stephan J. Szyszkoski, P.S. #33986, found and accepted "T" iron by Rowe, east 33.80' fnd. 1/2" rod at NE corner Section 3, T12N-R11E, S20°W 32.27' set nail & tag 11192 N. face 23" Maple, N50°E 43.74' face road sign post, S05°E 13.33' W. edge W. leg arrow sign.



SURVEY &
REMONUMENTATION

MAR 02 1999

SECTION