

SURVEY &
REMONUMENTATION

MAY 05 1997

COMMISSION

1996 REMONUMENTATION PROGRAM
LAND CORNER RECORDATION CERTIFICATE
Filing Requirement of Act 74, Mich. P.A. 1970

For corners in NOVESTA TOWNSHIP

TUSCOLA
(County)

Located In:

Corner Code *11*

- 1. Public Land Survey T13N R 11E
T R
T12N R 11E
T R
- 2. Property Controlling S T R
in Section S T R
- 3. Miscellaneous S T R
Property in Sec. S T R

M-13 ✓
M-1

RECEIVED FOR RECORD
LIBER NO. _____ PAGE NO. 44
FILING NO. Novesta
DEC 12 1996
TIME 3:30 PM
GINNY McLAREN, REGISTER OF DEEDS
TUSCOLA COUNTY MICHIGAN

Register of Deeds Stamp & File Number

- 4. Lot No. _____, Recorded Plat _____
- 5. Private Claims _____

	A	B	C	D	E	F	G	H	I	J	K	L
2	6		5		4		3		2		1	
3												
4	7		8		9		10		11		12	
5												
6	13		17		16		15		14		13	
7												
8	19		20		21		22		23		24	
9												
10	30		29		28		27		26		25	
11												
12	31		32		33		34		35		36	
13												

I, Lionel Roy Emery, in a field survey on July 15, 1994, do hereby certify that under requirements of P.A. 74, Michigan P.A. of 1970, the corner points mentioned in lines 1 and 2 above were in conformance with regulations and rules therefore as required in the current manual of survey instructions of the United States Department of the Interior, Bureau of Land Management or by a decree of a Court of Law and/or that the corner points mentioned in lines 3, 4 and 5 above were in conformance with the rules of the Michigan Board of Land Surveyors or by a Decree of a Court of Law, established, re-established, monumented, re-monumented, recovered, found as expressed below:

NOTE: Not more than 4 corners, all in the same town and range, may be recorded on this certificate.

A. Description of original monument and accessories and/or subsequent restoration:

- 1834 (Government Land Office Notes) Harvey Parke, D.S. --Township corner established- Hemlock 24 S64W 20; Hemlock 10 N23½E 5
- 1889 (Resurvey of Evergreen Twp., T13N-R12E, Sanilac County) F.F. Rogers, Surveyor -Set Vitrified Stone (corner) 3 inches in diameter and 3 feet in the Earth- gives no accessories, but says set from old stake planted by J.A. Teskey from bearing trees and checked by Rogers
- 1974 (Survey -Liber 3 of Surveys, pages 116 and 117, Sanilac County) Irvin Choep, P.S. 6504. Survey is of Section 31, T13N-R12E and shows Southwest corner of Section 31. Gives no object marking corner and no accessories.

B. Description of corner evidence found and/or method applied in restoring or reestablishing corner:

Found ½" diameter reinforcing rod together with accessories marked with nails and flagging. Reinforcing rod found at approximate centerline/centerline intersection of Gravel Road North & South with Gravel Road East. Dug in gravel and subsoil--found no further markings.

Accepted found reinforcing rod as marking original corner.

C. Description of monument for corner and accessories established to perpetuate locating the position of the corner:

Removed Reinforcing rod and replaced with Standard Tuscola County Concrete Monument with 2" Brass Cap stamped M1 T12N/R11E (Monument set September 20, 1994).
N54°E, 51.41'-T.C. Re-mon. tag set in Northwest face of 14" Poplar (found nail & flagging SW face)
S68°E, 84.69'-T.C. Re-mon. tag set in Southwest face of 8" Basswood
S42°E, 41.05'-T.C. Re-mon. tag set in West leg of upright Steel Vehicle Frame
N75°W, 29.78'-T.C. Re-mon. tag set above found nail in South face of telephone pedestal support post

NOTE: This corner is common with: M-1, T12N-R11E.

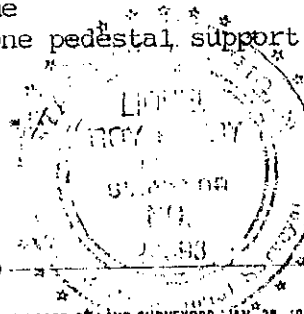
Signed by Lionel Roy Emery

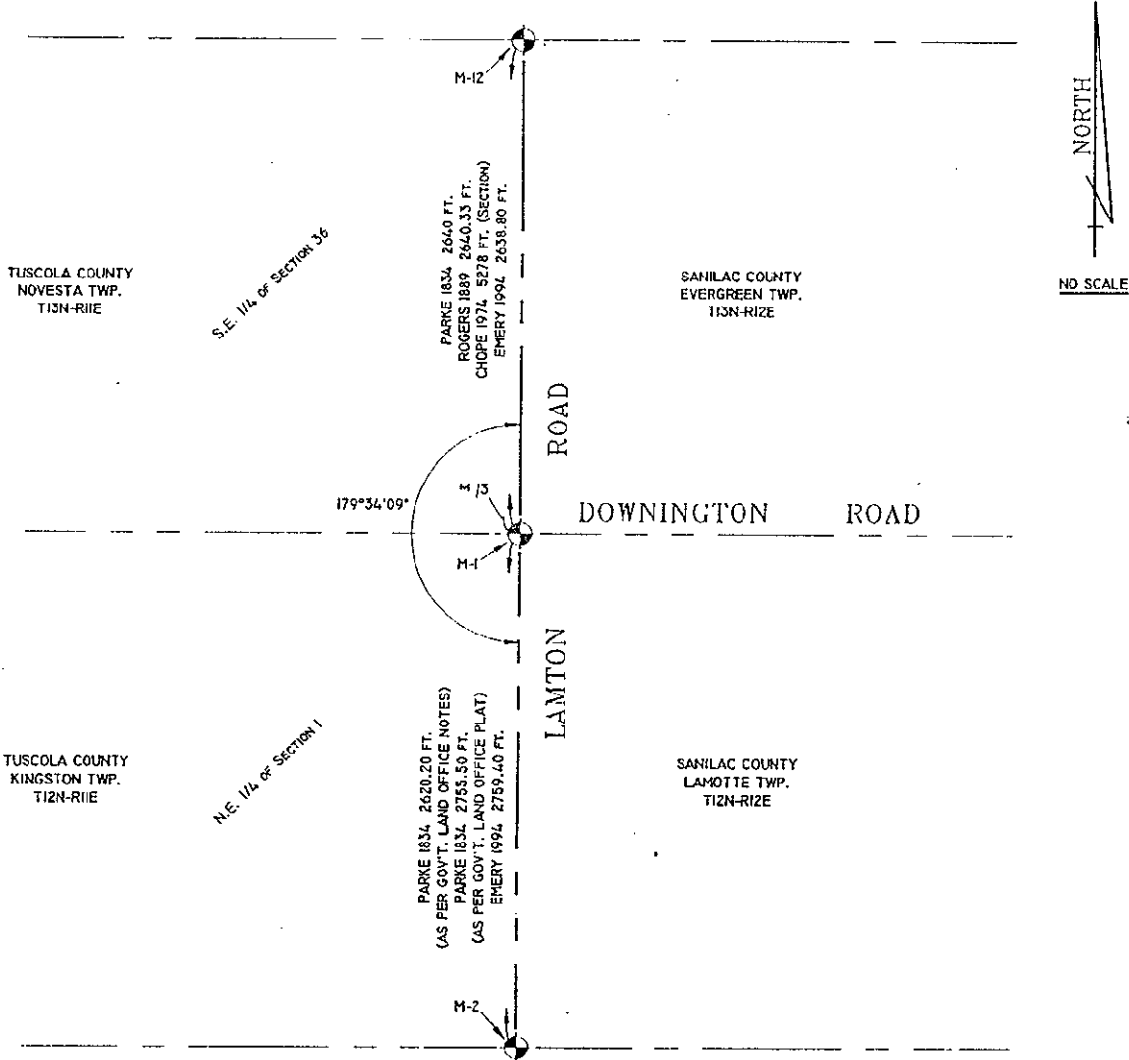
Date November 27, 1996

Surveyor's Michigan License No. 24593

APPROVED
12-11-96

FORM APPROVED BY MICHIGAN STATE BOARD OF LAND SURVEYORS, JAN. 28, 1971
REVISED MAY 14, 1971
REVISED JAN. 1992





TUSCOLA COUNTY
NOVESTA TWP.
T12N-R1E

S.E. 1/4 of SECTION 36

SANILAC COUNTY
EVERGREEN TWP.
T12N-R1E

TUSCOLA COUNTY
KINGSTON TWP.
T12N-R1E

N.E. 1/4 of SECTION 1

SANILAC COUNTY
LAMOTTE TWP.
T12N-R1E

PARKE 1834 2640 FT.
ROGERS 1889 2640.33 FT.
CHOPE 1974 5278 FT. (SECTION)
EMERY 1994 2638.80 FT.

PARKE 1834 2620.20 FT.
(AS PER GOV'T. LAND OFFICE NOTES)
PARKE 1834 2755.50 FT.
(AS PER GOV'T. LAND OFFICE PLAT)
EMERY 1994 2759.40 FT.

M-12

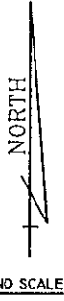
M-3

M-1

M-2

LAMTON ROAD

DOWNINGTON ROAD



NO SCALE