

1996 REMONUMENTATION PROGRAM
LAND CORNER RECORDATION CERTIFICATE
Filing Requirement of Act 74, Mich. P.A. 1970

RECEIVED FOR RECORD
LIBER NO. _____ PAGE NO. 47
FILE NO. WISNER 1000
96 DEC 30 PM 1:59
Jonathan M. Field
TUSCOLA COUNTY
REGISTER OF DEEDS

For corners in **WISNER TWP.**

TUSCOLA Located In: _____ Corner Code # _____
(County)

1. Public Land Survey T 14N R 07E _____ D-13
T _____ R _____
T _____ R _____
T _____ R _____

2. Property Controlling S _____ T _____ R _____
in Section S _____ T _____ R _____

3. Miscellaneous S _____ T _____ R _____
Property in Sec. S _____ T _____ R _____

Register of Deeds Stamp & File Number

4. Lot No. _____, Recorded Plat _____
5. Private Claims _____

	A	B	C	D	E	F	G	H	I	J	K	L	M
1													
2	6	5	4	3	2	1							
3													
4	7	8	9	10	11	12							
5													
6	18	17	16	15	14	13							
7													
8	19	20	21	22	23	24							
9													
10	30	29	28	27	26	25							
11													
12	31	32	33	34	35	36							
13													

I, JONATHAN M. FIELD, in a field survey on DECEMBER 16 19 96, do hereby certify that under requirements of P.A. 74, Michigan P.A. of 1970, the corner points mentioned in lines 1 and 2 above were in conformance with regulations and rules therefore as required in the current manual of survey instructions of the United States Department of the Interior, Bureau of Land Management or by a decree of a Court of Law and/or that the corner points mentioned in lines 3, 4 and 5 above were in conformance with the rules of the Michigan Board of Land Surveyors or by a Decree of a Court of Law; established, re-established, monumented, re-monumented, recovered, found as expressed below:

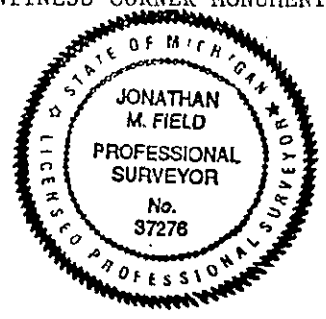
NOTE: Not more than 4 corners, all in the same town and range, may be recorded on this certificate.

A. Description of original monument and accessories and/or subsequent restoration:
1834 GLO; RISDON, D.S.; SET POST; W. OAK 16 N68E 24LKS, W. OAK 24 N76W 49 LKS

B. Description of corner evidence found and/or method applied in restoring or reestablishing corner:
1996 ROWE ENG.; FIELD, P.S.#37276; FND. NO EVIDENCE OF MONUMENT AT CORNER; REESTABLISHED CORNER POSITION BY SINGLE PRORATION OF GLO DIST. BETWEEN M-13 & E-13 T14N-R7E (21120' GLO VS. 21120.087 MEASURED) & ON LINE FROM C-13 TO E-13 T14N-R7E POSITION FALLS ON DITCH BANK - SET REFERENCE MONUMENT 25.00' N. OF D-13

ACCEPTED PRORATED POSITION AS PROPER REESTABLISHMENT OF ORIGINAL CORNER LOCATION

C. Description of monument for corner and accessories established to perpetuate locating the position of the corner:
D-13 SET STANDARD REMON MONUMENT STAMPED "D 13 W.C. T14N R7E"
N11°W, 74.56' SET 1/2" ROD W/CAP #37276 WITNESSES ARE TO WITNESS CORNER MONUMENT
N61°W, 60.69' SET 1/2" ROD W/CAP #37276 NOT D-13
S78°W, 47.95' SET 1/2" ROD W/CAP #37276
S67°W, 29.76' CENTER OF ROAD SIGN POST
N61°E, 28.90' SET 1/2" ROD W/CAP #37276

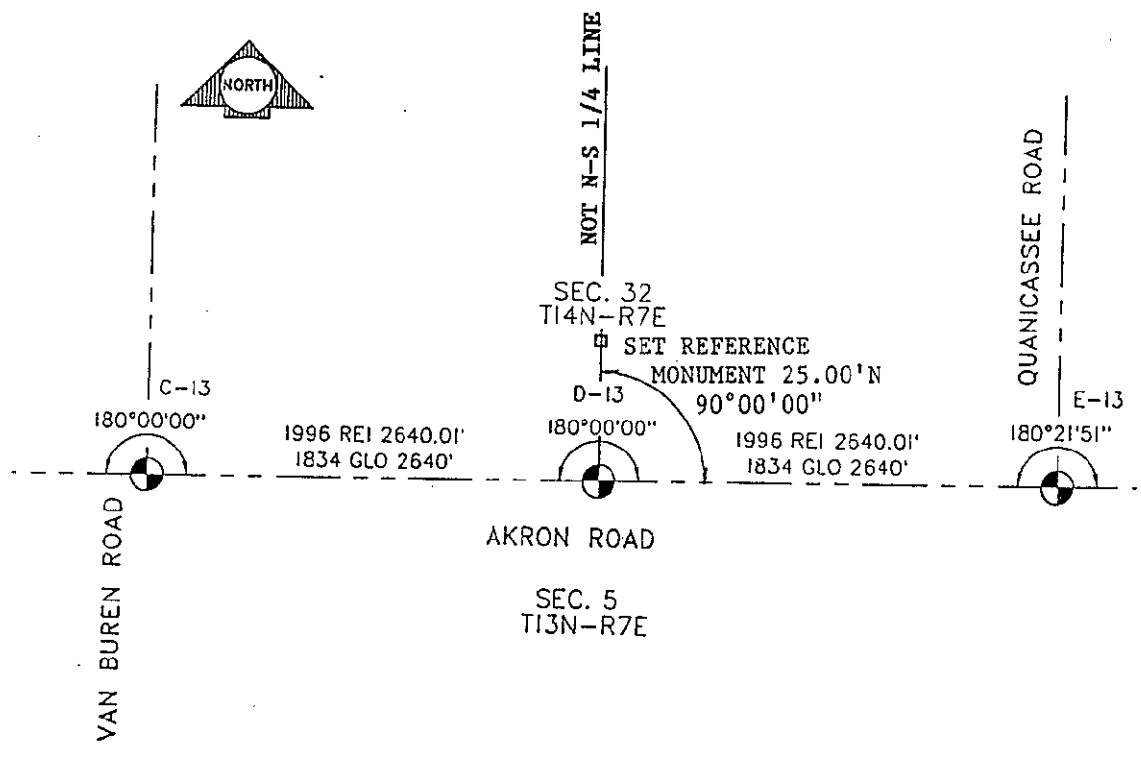


Signed by Jonathan M. Field Date 12-24-96
Surveyor's Michigan License No. 37276

APPROVED
12-23-96
[Handwritten initials]

FORM APPROVED BY MICHIGAN STATE BOARD OF LAND SURVEYORS, JAN. 28, 1971
REVISED MAY 14, 1975
REVISED JAN., 1983
ADAPTED FOR WORD PROCESSING MARCH, 1993

MAY 20 1987



VAN BUREN ROAD

AKRON ROAD

QUANICASSEE ROAD

SEC. 32
T14N-R7E

SEC. 5
T13N-R7E

SET REFERENCE
MONUMENT 25.00'N
90°00'00"

C-13
180°00'00"

1996 REI 2640.01'
1834 GLO 2640'

D-13
180°00'00"

1996 REI 2640.01'
1834 GLO 2640'

E-13
180°21'51"

NORTH

NOT N-S 1/4 LINE