

1996 REMONUMENTATION PROGRAM
 LAND CORNER RECORDATION CERTIFICATE
 Filing Requirement of Act 74, Mich. P.A. 1970

For corners in S. Akron Twp.

<u>Tuscola</u> (County)	Located In:	Corner Code #
1. Public Land Survey	T14N R 8E	D-13
	T R	
	T R	
	T R	
2. Property Controlling in Section	S T R	
	S T R	
3. Miscellaneous Property in Sec.	S T R	
	S T R	

RECEIVED FOR RECORD
 LIBER NO. _____ PAGE NO. 101
 TUSCOLA COUNTY REGISTER OF DEEDS
 S. AKRON
 95 DEC 10 PM 4:51
 Register of Deeds Stamp & File Number

4. Lot No. _____, Recorded Plat _____
 5. Private Claims _____

I, Kenneth D. Dunton, in a field survey on June 16, 1996 do hereby state that under requirements of P.A. 74, Michigan P.A. of 1970, the corner points mentioned in lines 1 and 2 above were in conformance with regulations and rules therefore as required in the current manual of survey instructions of the United States Department of the Interior, Bureau of Land Management or by a decree of a Court of Law and for that the corner points mentioned in lines 3, 4 and 5 above were in conformance with the rules of the Michigan Board of Land Surveyors or by a Decree of a Court of Law, established, re-established, monumented, recovered, found as expressed below:

NOTE: Not more than 2 corners, all in the same town and range, may be recorded on this certificate.

A	B	C	D	E	F	G	H	I	J	K	L	M
1												
2	6	5	4	3	2	1						
3												
4	7	8	9	10	11	12						
5												
6	18	17	16	15	14	13						
7												
8	19	20	21	22	23	24						
9												
10	30	29	28	27	26	25						
11												
12	31	32	33	34	35	36						
13												

A. Description of original monument and accessories and/or subsequent restoration:
 G.L.O. 1821 Date unknown
 Joseph Wampler, D.S. Survey of Sec. 32, T14N-R8E
 Quarter Sec. cor. 12 in diam. Edward Teskey, County Surveyor (1895-1898)
 Lynn Gas Pipe at corner. No accessories given.

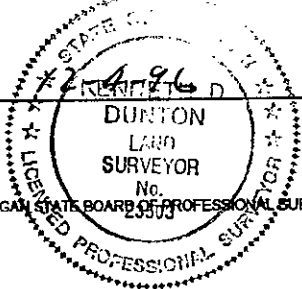
B. Description of corner evidence found and/or method applied in restoring or reestablishing corner:
 No evidence of Corner D-13 found. Set proportional to measurements in the South 1/2 of Section 32, T14N-R8E by Edward Teskey (survey date unknown). Accepted this position as the best re-establishment of Corner D-13. Corner falls in line with ditch to North.

C. Description of monument for corner and accessories established to perpetuate locating the position of the corner:
 Set standard monument stamped Corner D-13, T14N-R8E. Placed monument box over monument.
 N03°W 21.22' set 1/2" x 18" rod & cap #23503 in road shoulder.
 S04°W 8.94' set 1/2" x 18" rod & cap #23503 in road shoulder.
 N03°W 56.60' set T. C. Remon. tag & spike in W. face 42" tree.
 S66°W 116.46' fnd. P.K. nail in N. face P. Pole, placed T.C. Remon. tag & spike above P.K.
 North 6'± physical centerline of E-W asphalt pavement.

Signed by *Kenneth D. Dunton*
 Surveyor's Michigan License No. 23503

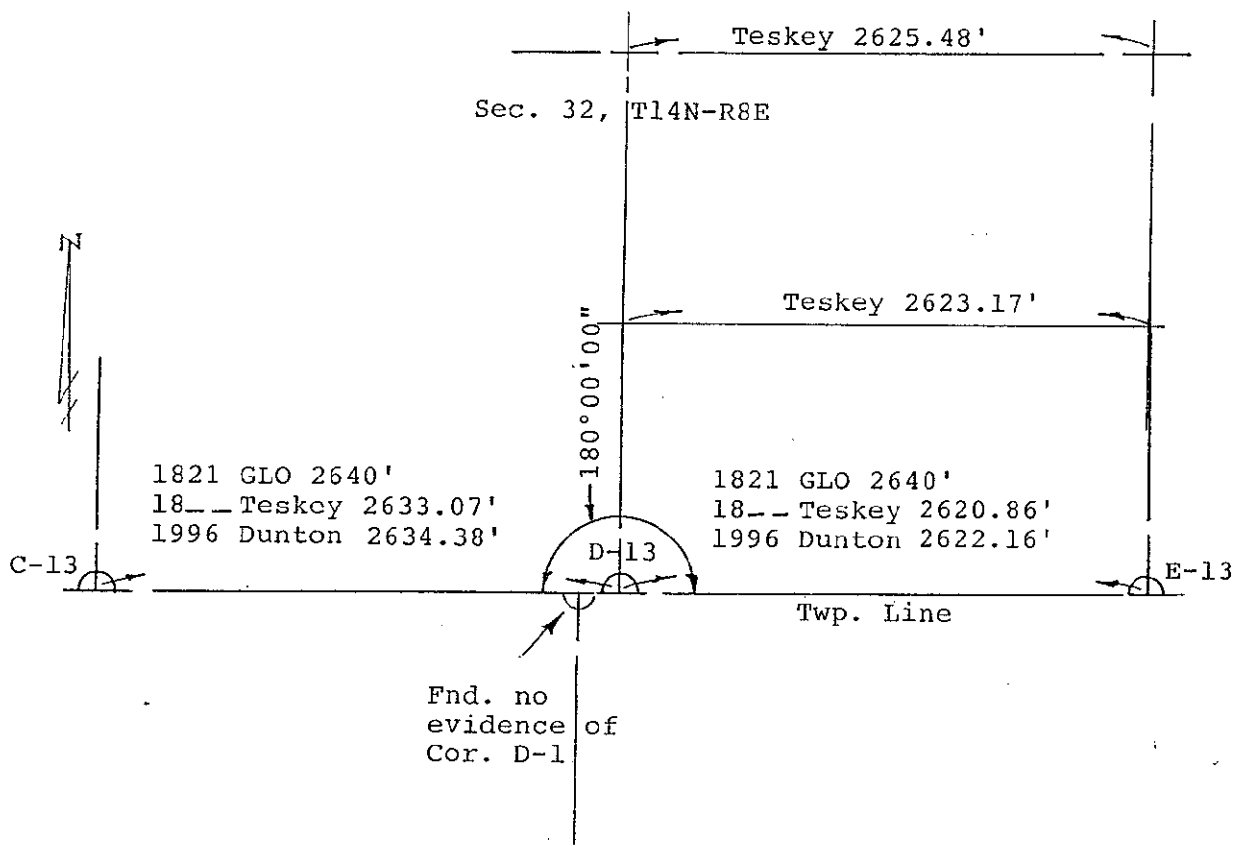
Date _____

APPROVED
 12-4-96



FORM APPROVED BY MICHIGAN STATE BOARD OF PROFESSIONAL SURVEYORS, JAN. 28, 1971
 REVISED MAY 14, 1975
 REVISED JAN., 1983
 REVISED OCT., 1995

MAY 20 1997



Sec. 5, T13N-R8E