



Section A. continued:

April 6, 1972 Survey Liber 1, Page 370 by Robert G. Kay, R.L.S. #14096. No mention of object found or set.

- S89°W 25.4' to face t.p.
- S80°E 31.7' to face p.p.
- East 3.4' to road centerline.
- S20°E 96.4' 2" pipe.

Oct. 26, 1973 Survey Liber 438, Page 233 by Lloyd McGinnis, R.L.S. #18999. Found iron.

- S89°W 25.4' to face t. pole.
- S80°E 31.7' to face p. pole.
- East 3.4' to centerline road.

Dec. 1976 & Mar. 24, 1977 Act 74, T14N-R8E, Page 26 by Lloyd McGinnis, R.L.S. #18999. No mention of object found or set. Accessories same as corner M-10, Liber 1 of Surveys, Page 370.

May 21, 1980 Act 74, T14N-R8E, Page 50 by Douglas W. Hooth, R.L.S. #7966 with Michigan Dept. of Transportation.

Found broken p. k. nail, agrees with witnesses from L.C.R.C. of 6-24-77 (no desc. of cor. mon. on L.C.R.C. of 6-24-77).

Set 1" iron pipe in standard monument box @ location of broken p. k. nail.

S02°35'E W 1/4 cor. Sec. 31 88.77'

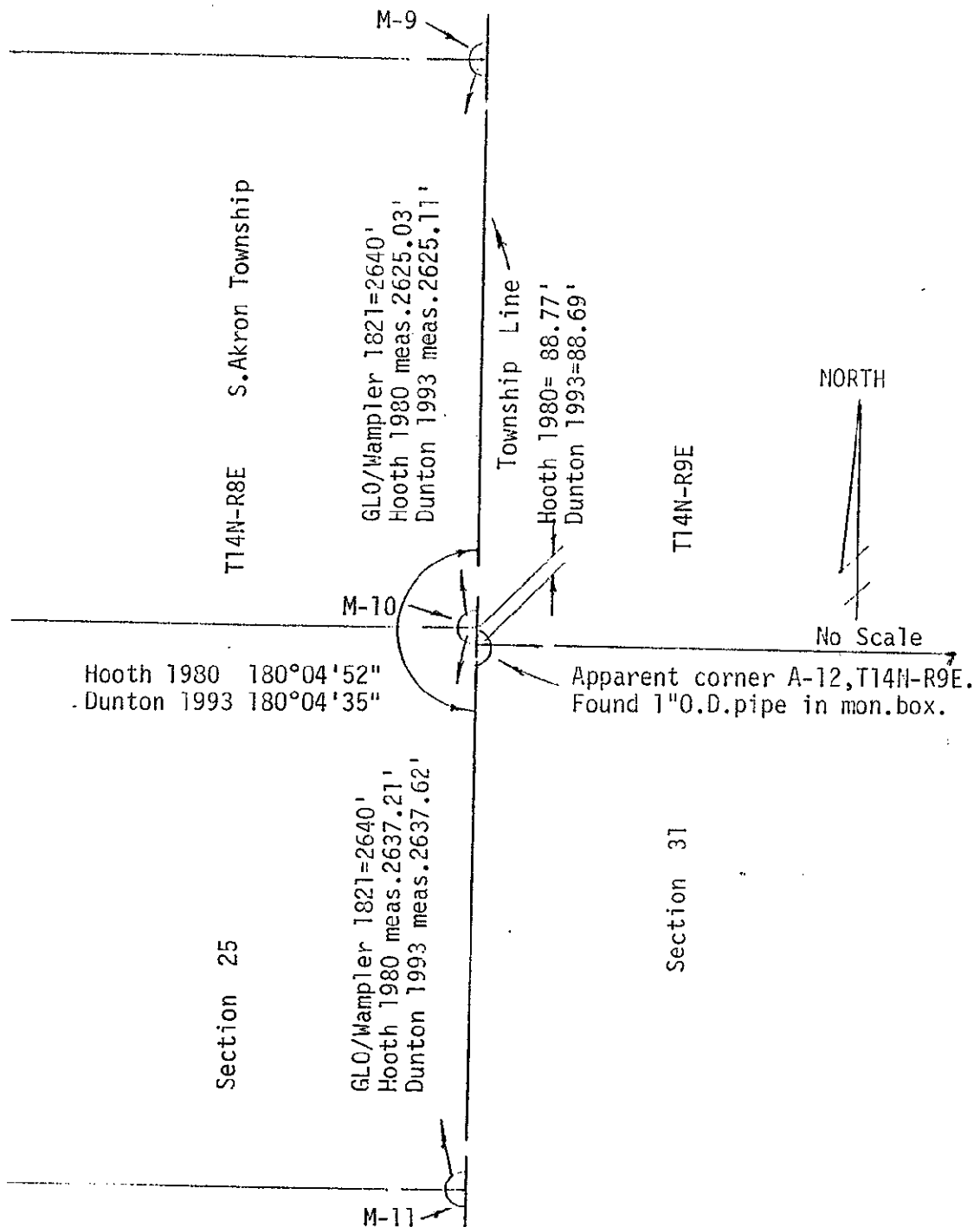
N25°E 39" Oak 109.92'.

S20°E 2" I. pipe 96.4'.

S86°W t. pole 25.74'.

S73°E p. pole 32.20'.

West edge bit. ex-M-138 5.1'.



COPY