

MAR 02 1993

RECEIVED FOR RECORD

1998 REMONUMENTATION PROGRAM  
LAND CORNER RECORDATION CERTIFICATE  
Filing Requirement of Act 74, Mich. P.A. 1970

LIBER NO. \_\_\_\_\_ PAGE NO. \_\_\_\_\_  
FILE NO. #67 Elmwood Twp.

98 DEC 18 AM 10:07

SECTION

For corners in ELMWOOD TOWNSHIP

TUSCOLA  
(County)

Located In:

Corner Code #

- 1. Public Land Survey T 14N R 10E A-3  
T R  
T R  
T R
- 2. Property Controlling in Section S T R  
S T R
- 3. Miscellaneous Property in Sec. S T R  
S T R

*George M. Emery*  
TUSCOLA COUNTY  
REGISTER OF DEEDS

Register of Deeds Stamp & File Number

- 4. Lot No. \_\_\_\_\_, Recorded Plat \_\_\_\_\_
- 5. Private Claims \_\_\_\_\_

I, LIONEL ROY EMERY, in a field survey on OCT. 22, 19 98 do hereby state that under requirements of P.A. 74, Michigan P.A. of 1970, the corner points mentioned in lines 1 and 2 above were in conformance with regulations and rules therefore as required in the current manual of survey instructions of the United States Department of the Interior, Bureau of Land Management or by a decree of a Court of Law and /or that the corner points mentioned in lines 3, 4 and 5 above were in conformance with the rules of the Michigan Board of Land Surveyors or by a Decree of a Court of Law, established, re-established, monumented, recovered, found as expressed below:

NOTE: Not more than 2 corners, all in the same town and range, may be recorded on this certificate.

	A	B	C	D	E	F	G	H	I	J	K	L	M
1													
2	6		5		4		3		2		1		
3													
4	7		8		9		10		11		12		
5													
6	18		17		16		15		14		13		
7													
8	19		20		21		22		23		24		
9													
10	30		29		28		27		26		25		
11													
12	31		32		33		34		35		36		
13													

A. Description of original monument and accessories and/or subsequent restoration:

1835 GLO NOTES (PG. 328); HERVEY PARKE, DEP. SUR. SET POST CORNER SECS. 1 & 12; ELM 17 S44W 29; W. ASH 7 N46 1/2W 23 1/2- GLO NOTES (PAGE 358); PARKE'S SURVEY OF LINE BETWEEN SECS. 6 & 7, T14N R10E (ELMWOOD TOWNSHIP) ADDS ACCESSORIES; CEDAR 13 S42E 11; ELM 10 N33E 70  
 (NO DATE)-COUNTY SURVEYOR'S "MINUTES OF SURVEY" (PAGES 108 AND 109) BY: (NO SURVEYOR'S SIGNATURE) SURVEY OF SECTION 12, T14N-R9E; NO OBJECT OR ACCESSORIES  
 1995 RECORDED SURVEY (LIBER 683, PAGE 006) BY: JONATHAN M. FIELD, P.S. #37276; FND. 1" PIPE IN MONUMENT BOX; N30°W 90.56' FND. P-K NAIL IN SE FACE OF P. POLE; N60°W 46.75' CENTER OF ROAD SIGN POST; S50°E, FND. 1/2" ROD IN NW COR. HEADWALL (BAG. CONC.); N55°E, 62.85' SET PUNCH HOLE IN TOP W. END 12" CMP

B. Description of corner evidence found and/or method applied in restoring or reestablishing corner:

FOUND PIPE IN MONUMENT BOX TOGETHER WITH 3 ACCESSORIES SHOWN ON SURVEY IN SECTION A. ABOVE INDICATING FOUND PIPE TO BE IN SAME POSITION AS FOUND BY FIELD IN 1995.

ACCEPTED FOUND PIPE AS A CAREFUL AND FAITHFUL PERPETUATION OF THE ORIGINAL GOVERNMENT CORNER.

C. Description of monument for corner and accessories established to perpetuate locating the position of the corner:

DROVE PIPE DOWN WITH 5/8" RE-ROD IN MONUMENT BOX, FITTED RE-ROD WITH STANDARD TUSCOLA COUNTY 2 IN. DIA. BRASS CAP STAMPED M3 T14N R9E. -PLACED CONCRETE IN MONUMENT BOX.  
 N22°E, 48.45 FT. SET 1/2" RE-ROD IN GRAVEL SHOULDER  
 N50°E, 62.90 FT. FOUND PUNCH HOLE IN WEST END OF 12" CMP  
 S50°E, 42.33 FT. FOUND 1/2" IRON ROD IN BAGGED CONCRETE HEADWALL  
 S25°W, 50.62 FT. SET CHISELED '+' IN TOP OF 24" CMP NEAR WEST END  
 N20°W, 90.82 FT. SET T.C. REMON TAG OVER FOUND SPIKE IN EAST FACE OF POWER POLE (FND. P.K. NAIL IN S. FACE @ 90.60')

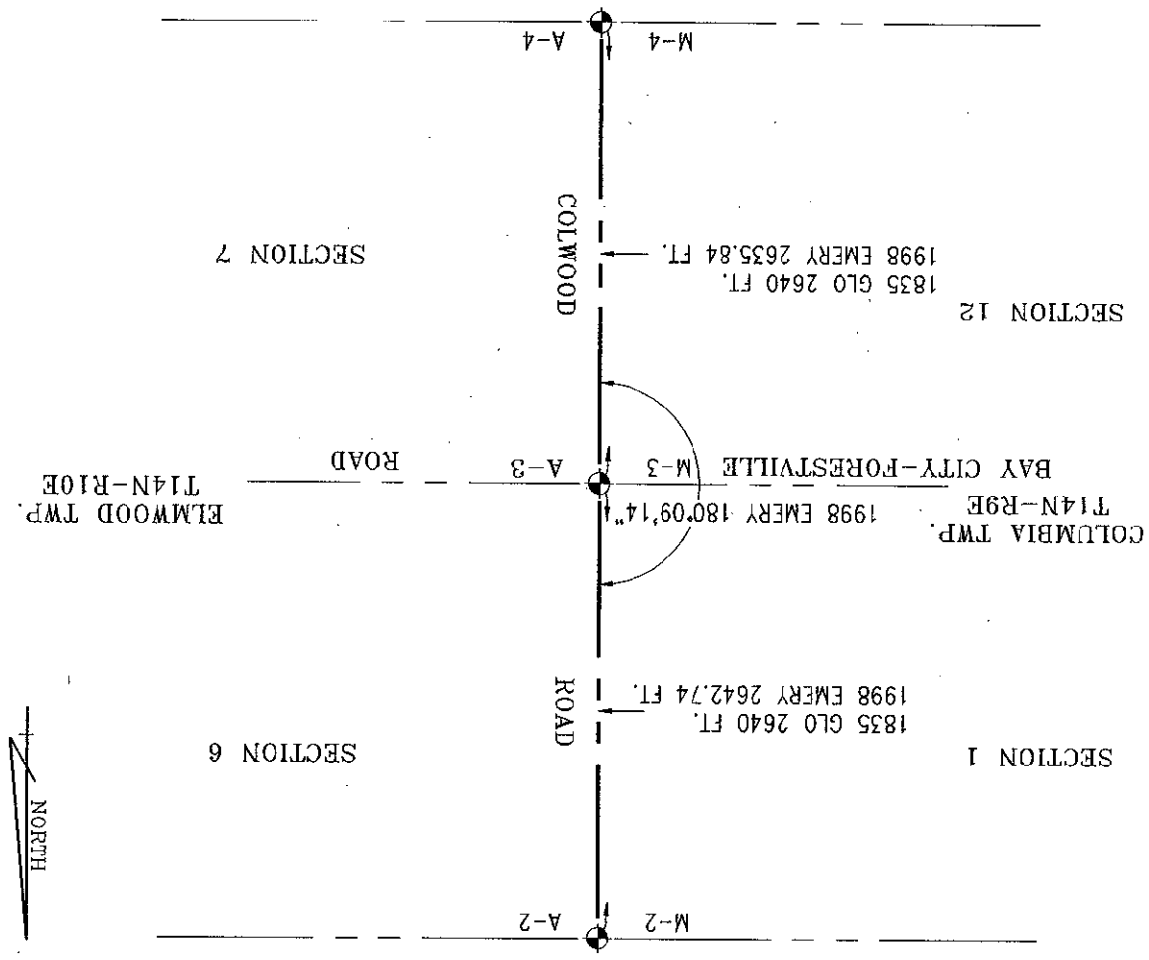
NOTE: THIS CORNER IS COMMON WITH CORNER M 3 T14N R9E (COLUMBIA TOWNSHIP)

Signed by Lionel Roy Emery  
Surveyor's Michigan License No. 24593

Date DECEMBER 18, 1998

APPROVED  
12-9-98  
*J.M.E.*  
*R.R.E.*





SURVEY &  
REMONUMENTATION

MAR 02 1999

SECTION