

MAR 02 1999

1998 REMONUMENTATION PROGRAM
LAND CORNER RECORDATION CERTIFICATE
Filing Requirement of Act 74, Mich. P.A. 1970

RECEIVED FOR RECORD
LIBER NO. _____ PAGE NO. 46
FILE NO. ELKLAND TWP

98 NOV 20 AM 11:39

George M. ...
TUSCOLA COUNTY
REGISTER OF DEEDS

Register of Deeds Stamp & File Number

SECTION
For corners in: ELKLAND TWP.

<u>TUSCOLA</u> (County)	Located In:	Corner Code #
1. Public Land Survey	T <u>14N</u> R <u>11E</u>	<u>A-2</u>
	T _____ R _____	_____
	T _____ R _____	_____
	T _____ R _____	_____
2. Property Controlling in Section	S _____ T _____ R _____	_____
	S _____ T _____ R _____	_____
3. Miscellaneous Property in Sec.	S _____ T _____ R _____	_____
	S _____ T _____ R _____	_____
4. Lot No. _____	Recorded Plat _____	
5. Private Claims _____		

	A	B	C	D	E	F	G	H	I	J	K	L	M
1													
2	6	5	4	3	2	1							
3													
4	7	8	9	10	11	12							
5													
6	18	17	16	15	14	13							
7													
8	19	20	21	22	23	24							
9													
10	30	29	28	27	26	25							
11													
12	31	32	33	34	35	36							
13													

I, JONATHAN M. FIELD, in a field survey on MAY 15 1998, do hereby certify that under requirements of P.A. 74, Michigan P.A. of 1970, the corner points mentioned in lines 1 and 2 above were in conformance with regulations and rules therefore as required in the current manual of survey instructions of the United States Department of the Interior, Bureau of Land Management or by a decree of a Court of Law and/or that the corner points mentioned in lines 3, 4 and 5 above were in conformance with the rules of the Michigan Board of Land Surveyors or by a Decree of a Court of Law; established, re-established, monumented, re-monumented, recovered, found as expressed below:

NOTE: Not more than 4 corners, all in the same town and range, may be recorded on this certificate.

A. Description of original monument and accessories and/or subsequent restoration:
1835 GLO; PARKE, D.S.; SET AS M-2 T14N-R10E; 1/4 SEC. POST; PINE 15 S30W 24 LKS., B. ASH 6 N7W 13 1/2 LKS. 1916 PRASCHAU; CO. DRAIN NOTES BK.25 PG.209; SHEBEON DRAIN CROSSES TWP. LINE AT SW COR. OF NW 1/4 SEC. 6 T14N-R10E
1958 CASE; CO. DRAIN NOTES BK.40 PG.391; SHEBEON DRAIN CROSSES TWP. LINE AT SE COR. NE 1/4 SEC.1 T14N-R9E

GLO NOTES FOR T14N-R11E IMPLY THAT THIS CORNER IS COMMON WITH M-2 T14N-R10E

B. Description of corner evidence found and/or method applied in restoring or reestablishing corner:
1998 ROWE; FIELD, PS #37276; FND. NO EVIDENCE OF MONUMENT AT CORNER; REESTABLISHED CORNER POSITION BY SINGLE PROPORTION OF GLO DISTANCES; POSITION THUS REESTABLISHED FALLS AT APPROXIMATE C/L - C/L OF EXISTING DRAINAGE DITCH

ACCEPTED PROPORTION AS BEST REESTABLISHMENT OF ORIGINAL CORNER POSITION

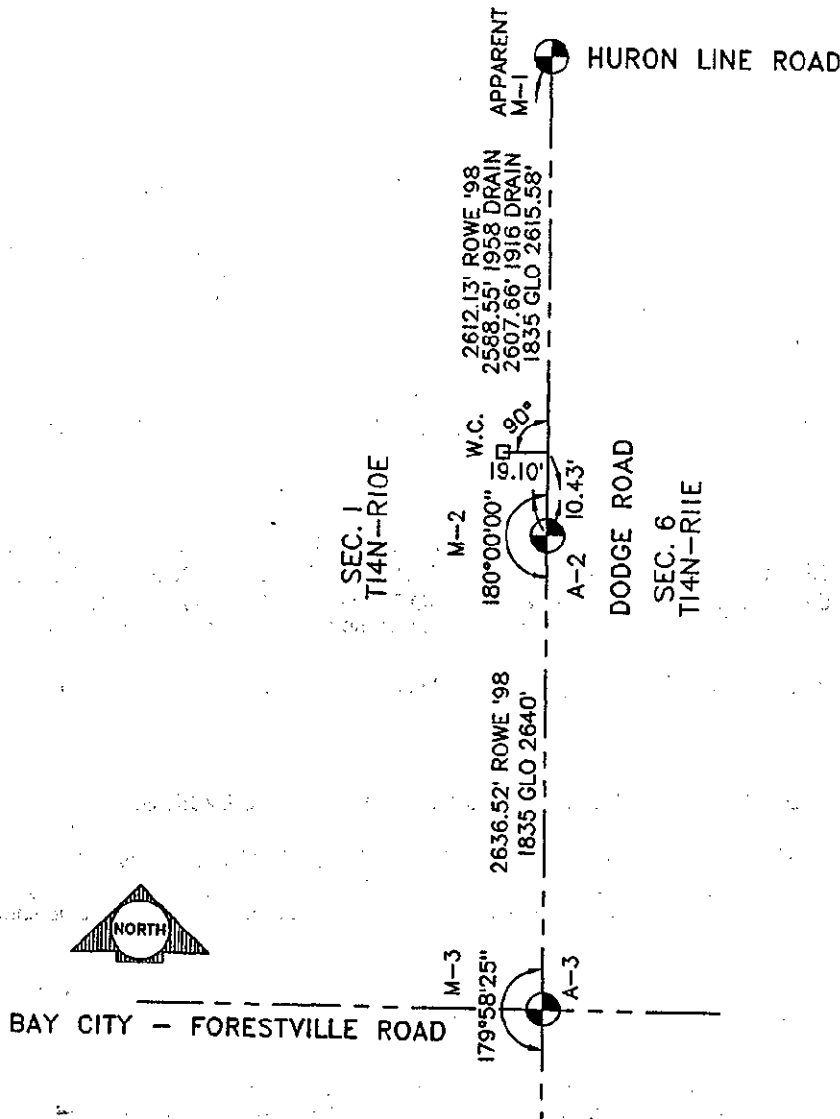
C. Description of monument for corner and accessories established to perpetuate locating the position of the corner:
A-2 SET WITNESS CORNER (STD. REMON MONUMENT CAP STAMPED M-2 W.C. T14N R10E) 10.43' N. & 19.10' W.
(SEE BACK OF THIS FORM FOR SKETCH)
WITNESSES FOR A-2 WITNESS MONUMENT
S61°E, 21.77' POSITION OF M-2
S49°E, 62.08' SET 1/2" ROD W/ CAP #37276
N07°E, 104.77' SET NAIL W/ TAG #37276 IN P.POLE
S07°E, 112.63' SET NAIL W/ TAG #37276 IN P.POLE

WITNESSES FOR A-2 (ACTUAL POSITION)
N61°W, 21.77' SET REMON MON. FOR WIT. COR.
S43°E, 41.00' SET 1/2" ROD W/ CAP #37276
N03°W, 114.82' SET NAIL W/ TAG #37276 IN P.POLE
N03°W, 101.31' SET NAIL W/ TAG #37276 IN P.POLE

Signed by *Jonathan M. Field* Date 11-2-98
Surveyor's Michigan License No. 37276



APPROVED
10-19-98
[Signature]



SURVEY &
REMONUMENTATION

MAR 02 1999

SECTION