

MAR 02 1999

1998 REMONUMENTATION PROGRAM LAND CORNER RECORDATION CERTIFICATE

Filing Requirement of Act 74, Mich. P.A. 1970

SECTION

RECEIVED FOR RECORD LIBER NO. PAGE NO. 54 FILE NO. ELKLAND TWP

98 DEC -1 AM 8:57

George M. Schuen TUSCOLA COUNTY REGISTER OF DEEDS

Register of Deeds Stamp & File Number

For corners in: ELKLAND TWP.

Form with fields for TUSCOLA (County), Located In: T 14N R 11E, Corner Code # A-10, and numbered sections 1-5 for survey details.

Grid table with columns A-M and rows 1-13 containing numbers 1-36.

I, JONATHAN M. FIELD, in a field survey on MAY 15 1998, do hereby certify that under requirements of P.A. 74, Michigan P.A. of 1970, the corner points mentioned in lines 1 and 2 above were in conformance with regulations and rules therefore as required in the current manual of survey instructions of the United States Department of the Interior, Bureau of Land Management or by a decree of a Court of Law and/or that the corner points mentioned in lines 3, 4 and 5 above were in conformance with the rules of the Michigan Board of Land Surveyors or by a Decree of a Court of Law; established, re-established, monumented, re-monumented, recovered, found as expressed below:

NOTE: Not more than 4 corners, all in the same town and range, may be recorded on this certificate.

A. Description of original monument and accessories and/or subsequent restoration: 1835 GLO; PARKE D.S.; SET 1/4 SEC. POST; HEMLOCK 14 S35W 18 LKS., LYNN 8 N38W 50 LKS. 1973 ROWE ENG.; ROWE, P.S.#11192; SURVEY L.430 PG.641-42; FND 1" IRON BAR - SHAPED; WEST 42.05' STEEL FENCE POST & FENCE, S12°E 135.80' 20" TREE - ELM, S55°E 32.50' UNDERGROUND CABLE MARKER.

GLO NOTES FOR T14N-R11E IMPLY THAT THIS CORNER IS COMMON WITH M-10 T14N-R10E

B. Description of corner evidence found and/or method applied in restoring or reestablishing corner: 1998 ROWE; FIELD, PS #37276; FND P-K NAIL ON C/L ASPH ROAD N-S; REESTABLISHED CORNER POSITION FROM PREVIOUS SURVEY CITED IN SECTION A. ABOVE HOLDING RECORDED DISTANCE FROM SURVEY AND LINE THROUGH FOUND P-K NAIL.

ACCEPTED POSITION THUS REESTABLISHED AS BEST POSITION OF THE ORIGINAL CORNER POSITION

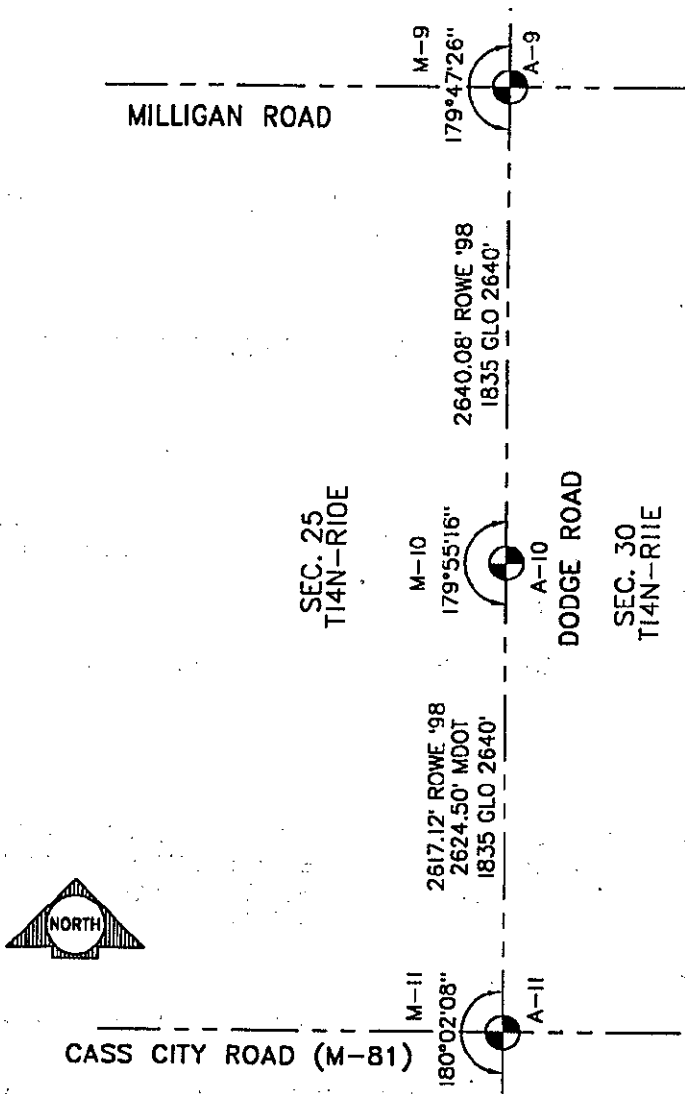
C. Description of monument for corner and accessories established to perpetuate locating the position of the corner: A-10 SET STANDARD REMON. MONUMENT & CAP STAMPED M 10 T14N R10E IN MON. BOX N34°E, 19.29' SET 1/2" ROD W/ CAP #37276 N37°W, 20.09' SET 1/2" ROD W/ CAP #37276 S70°E, 28.84' CHIS. NOTCH IN N. END 12" CMP S57°W, 38.77' CHIS. NOTCH IN N. END 18" CMP



Signed by Jonathan M. Field Date 11-26-98 Surveyor's Michigan License No. 37276

FORM APPROVED BY MICHIGAN STATE BOARD OF LAND SURVEYORS, JAN. 26, 1971 REVISED MAY 14, 1976 REVISED JAN., 1983 ADAPTED FOR WORD PROCESSING MARCH, 1993

APPROVED 11-25-98 [Handwritten initials]



SURVEY &  
REMONUMENTATION

MAR 02 1999

SECTION