

COPY

RECEIVED FOR RECORD
LIBER NO. _____ PAGE NO. #62
FILE NO. Elkland Twp

1999 REMONUMENTATION PROGRAM
LAND CORNER RECORDATION CERTIFICATE
Filing Requirement of Act 74, Mich. P.A. 1970

99 DEC 20 AM 8:24

For corners in Elkland Twp.

<u>Tuscola</u> <small>(County)</small>	Located In:	Corner Code #
1. Public Land Survey	T14N R 11E	G-13
	T ___ R ___	_____
	T ___ R ___	_____
	T ___ R ___	_____
2. Property Controlling in Section	S ___ T ___ R ___	_____
	S ___ T ___ R ___	_____
3. Miscellaneous Property in Sec.	S ___ T ___ R ___	_____
	S ___ T ___ R ___	_____

George T. ...
TUSCOLA COUNTY
REGISTER OF DEEDS

Register of Deeds Stamp & File Number

4. Lot No. _____, Recorded Plat _____
5. Private Claims _____

I, Lionel Roy Emery, in a field survey on July 7, 1999 do hereby state that under requirements of P.A. 74, Michigan P.A. of 1970, the corner points mentioned in lines 1 and 2 above were in conformance with regulations and rules therefore as required in the current manual of survey instructions of the United States Department of the Interior, Bureau of Land Management or by a decree of a Court of Law and for that the corner points mentioned in lines 3, 4 and 5 above were in conformance with the rules of the Michigan Board of Land Surveyors or by a Decree of a Court of Law, established, re-established, monumented, recovered, found as expressed below:

	A	B	C	D	E	F	G	H	I	J	K	L	M
1													
2		6		5		4		3		2		1	
3													
4		7		8		9		10		11		12	
5													
6		16		17		18		19		20		21	
7													
8		19		20		21		22		23		24	
9													
10		30		29		28		27		26		25	
11													
12		31		32		33		34		35		36	
13													

NOTE: Not more than 2 corners, all in the same town and range, may be recorded on this certificate.

A. Description of original monument and accessories and/or subsequent restoration:

1835 GLO; PARKE, D.S.; SET POST; BEECH 10 N83E 38, BEECH 8 N73W 16.
1973 KAY ENGINEERING; KAY, PS#14096; SURVEY L. 438 P.473; NO MENTION OF CORNER FOUND OR SET; S45E 67.83' BELL UTILITY POLE, S45W 33.40' 20" MAPLE, S25W 81.13' 18" MAPLE
1994 ROWE ENGINEERING; FIELD, PS#37276; SURVEY L. 662 P. 190-191; FOUND BOAT SPIKE IN MON. BOX; S60W 32.20' NAIL IN N. FACE 30" MAPLE, N50W 59.56' PK NAIL W/ TAG #37276 IN S. FACE P. POLE, S45E 70.44' PK NAIL W/TAG #37276 IN W. FACE P. POLE, N20E 78.12' PK NAIL W/TAG #37276 IN SE FACE P. POLE.

B. Description of corner evidence found and/or method applied in restoring or reestablishing corner:

1999 EMERY, PS#24593; FOUND BOAT SPIKE IN MON. BOX; RECOVERED 3 PREVIOUS ACCESSORIES WHICH INDICATE THAT FOUND BOAT SPIKE IS IN SAME POSITION AS 1994 ROWE SURVEY CITED ABOVE.

ACCEPTED FOUND BOAT SPIKE AS BEST AVAILABLE EVIDENCE OF ORIGINAL CORNER POSITION.

C. Description of monument for corner and accessories established to perpetuate locating the position of the corner:

G-13
SET STD. REMON. CAP STAMPED G13, T14N R11E, ENCASED IN CONCRETE INSIDE MON. BOX.
N35°E, 87.67', SET REMON. TAG IN SE FACE OF UTILITY POLE ABOVE FOUND TAG #37276
S40°E, 70.45', SET REMON. TAG IN W. FACE OF UTILITY POLE ABOVE FOUND TAG #37276
S40°W, 32.20', SET REMON. TAG IN N. FACE OF 36" MAPLE ABOVE FOUND NAIL
N50°W, 59.60', SET REMON. TAG IN S. FACE OF UTILITY POLE ABOVE FOUND TAG #37276



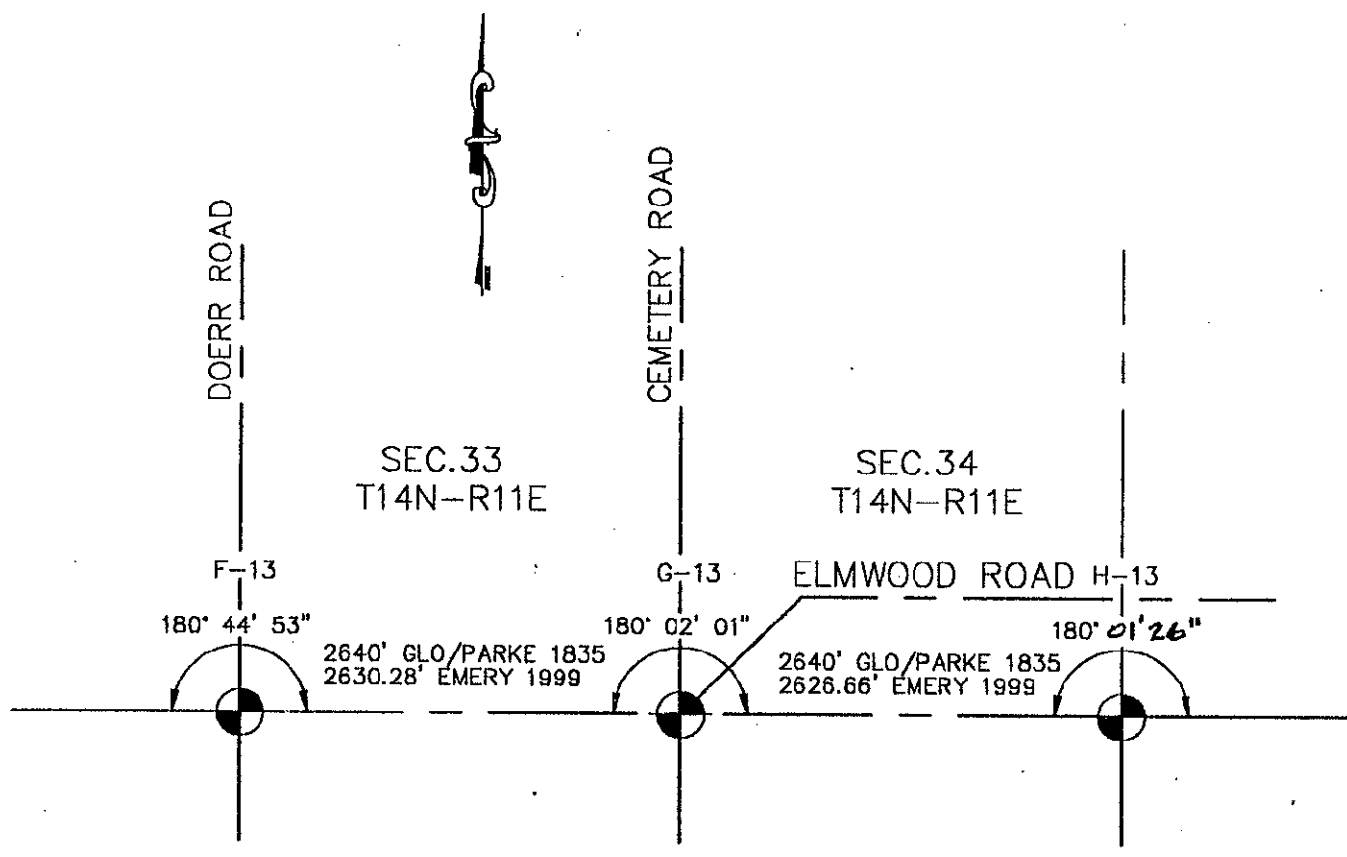
DUE TO THE UNTIMELY ILLNESS OF MR. LIONEL ROY EMERY, I, KARI M. LOHELA, HAVE REVIEWED HIS FIELD NOTES AND PREPARED THIS FORM FOR PEER GROUP REVIEW

Signed by Kari M. Lohela
Surveyor's Michigan License No. 44289

Date 12/15/99

APPROVED
12-15-99
RLB
QMG

FORM APPROVED BY MICHIGAN STATE BOARD OF PROFESSIONAL SURVEYORS, JAN. 28, 1971
REVISED MAY 14, 1975
REVISED JAN., 1983
REVISED OCT., 1995



SEC.33
T14N-R11E

SEC.34
T14N-R11E

SEC.4
T13N-R11E

SEC.3
T13N-R11E