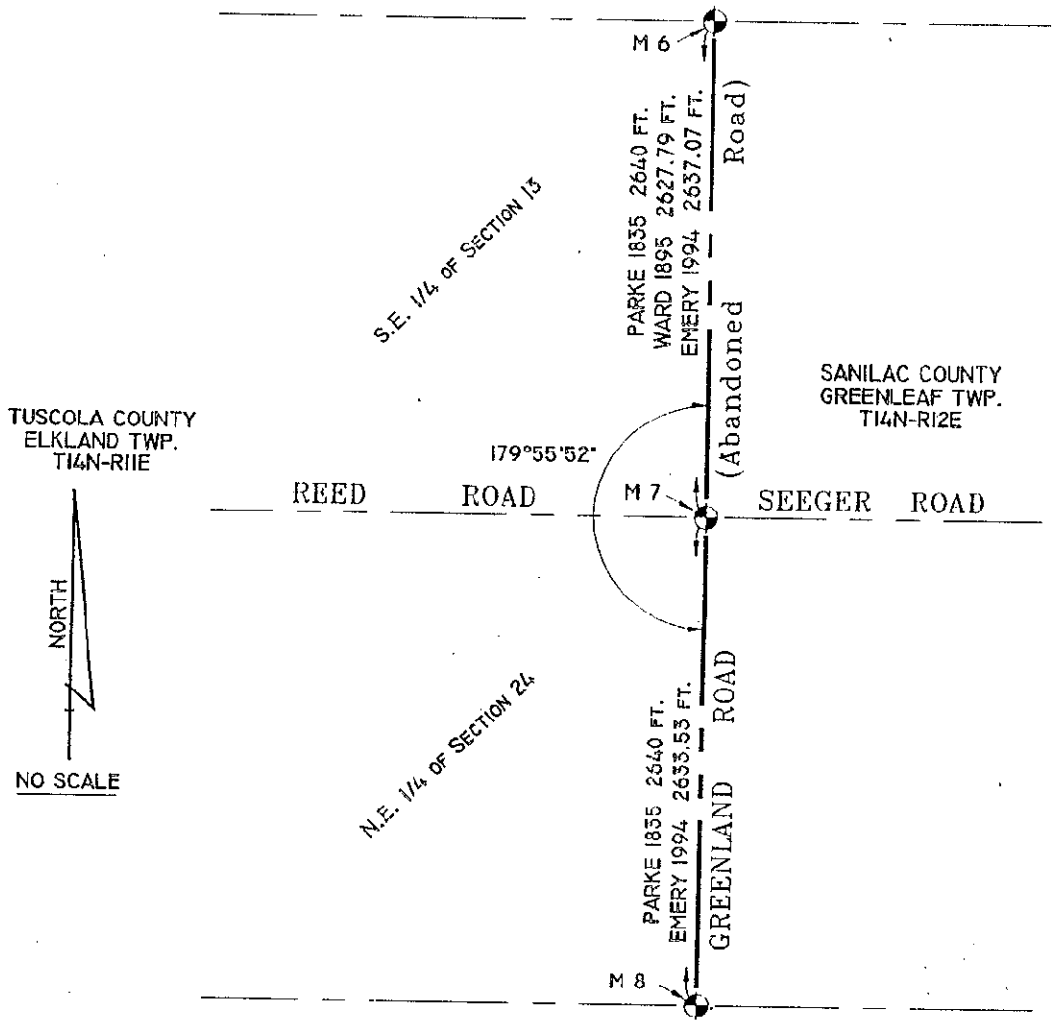




\*\*1895 (County Surveyor's Record, pages 164 and 165, Sanilac County) M.E. Ward - "Said to have been set by Bearing trees" no accessories or marker type given.

1976(Rowe) N45°W 22.18' RLS tag 11192 in 10" Maple; N20°W 42.14' RLS tag 11192 in 12" twin Ash; S45°W 32.50' Rd. sign post; N45°E 76.61' RLS tag 11192 TP

**COPY**



C L