

1993

COMMISSION

1993 REMONUMENTATION PROGRAM
LAND CORNER RECORDATION CERTIFICATE
Filing Requirement of Act 74, Mich. P.A. 1970
N. AKRON TOWNSHIP

RECEIVED FOR RECORD
LIBER NO. PAGE NO. 33
FILING NO. Akron
93 DEC 10 AM 11:57
MICHIGAN STATE BOARD OF LAND SURVEYORS
TUSCOLA COUNTY REGISTER OF DEEDS

For corners in
TUSCOLA
(County)

Located In: Corner Code #/

- 1. Public Land Survey T 15N R 8E M-4
- T _____ R _____
- T _____ R _____
- T _____ R _____
- 2. Property Controlling S _____ T _____ R _____
- in Section S _____ T _____ R _____
- 3. Miscellaneous S _____ T _____ R _____
- Property in Sec. S _____ T _____ R _____

Register of Deeds Stamp & File Number

- 4. Lot No. _____, Recorded Plat _____
- 5. Private Claims _____

	A	B	C	D	E	F	G	H	I	J	K	L	M
2	6	5	4	3	2	1							
3													
4	7	8	9	10	11	12							
5													
6	18	17	16	15	14	13							
7													
8	19	20	21	22	23	24							
9													
10	30	29	28	27	26	25							
11													
12	31	32	33	34	35	36							
13													

I, Kenneth D. Dunton in a field survey on Nov. 20, 19 93, do hereby certify that under requirements of P.A. 74, Michigan P.A. of 1970, the corner points mentioned in lines 1 and 2 above were in conformance with regulations and rules therefore as required in the current manual of survey instructions of the United States Department of the Interior, Bureau of Land Management or by a decree of a Court of Law and/or that the corner points mentioned in lines 3, 4 and 5 above were in conformance with the rules of the Michigan Board of Land Surveyors or by a Decree of a Court of Law; established, re-established, monumented, re-monumented, recovered, found as expressed below:

NOTE: Not more than 4 corners, all in the same town and range, may be recorded on this certificate.

A. Description of original monument and accessories and/or subsequent restoration:

1821 G.L.O. Notes
Joseph Wampler, D.S.
Set 1/2 mile post in prairie
White Oak 10" N 3/4°W 21.11 (1393.26')
no other

Aug. 22, 1881 Railroad plans filed with Tuscola County Register of Deeds. Saginaw, Tuscola & Huron Railroad survey & map certified by Charles Holmes, engineer for railroad co. No mention of object found or set. Distance of 43.75' shown from corner to centerline of railroad. It appears that measurement may have been made from Cor. A-6, T15N-R9E.

B. Description of corner evidence found and/or method applied in restoring or reestablishing corner:

Found no evidence of corner M-4, T15N-R8E.
It appears area may have been disturbed during construction of railroad & ditching.
Set by single proportion at split of measured mile between corners M-3 & M-5.

Note: See sketch on back of form.

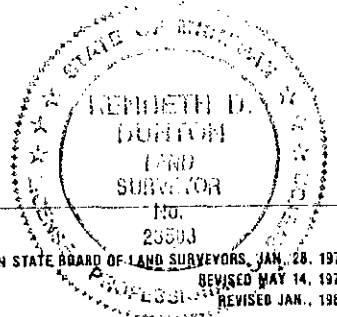
COPY

C. Description of monument for corner and accessories established to perpetuate locating the position of the corner:

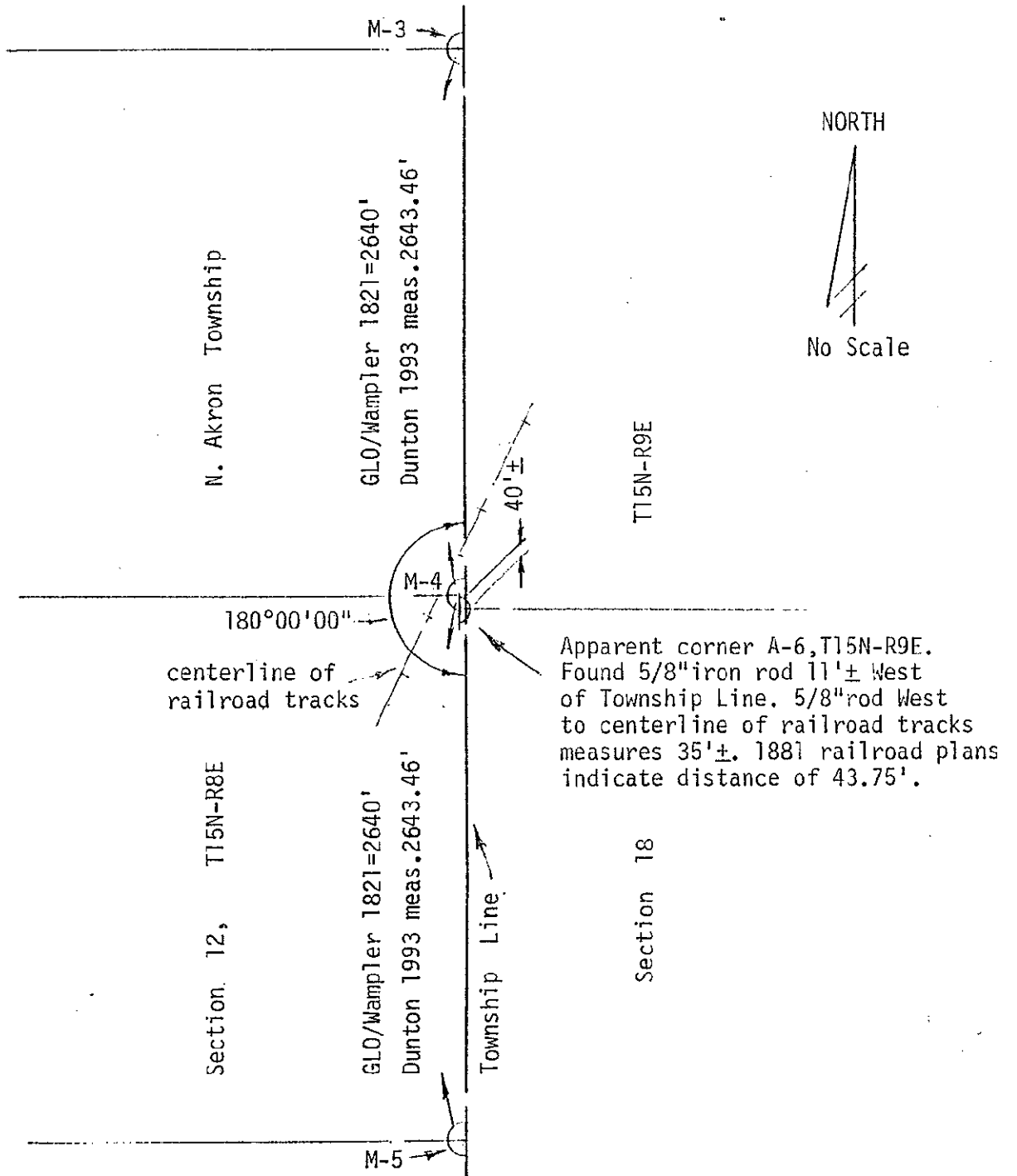
Set standard concrete monument with 2" brass cap stamped corner M-4, T15N-R8E. Set carsonite fiber witness post @ S. face of mon.
S18°17'30"W 41.16' found 5/8" iron rod, apparent cor. A-6, T15N-R9E.
N78°37'W 32.84' set 1" x 18" iron pipe.
S26°44'W 54.35' set T.C. Re-mon. tag & spike in E. face of p. pole.
S57°59'W 115.30' set T.C. Re-mon. tag & spike in E. face of p. pole.
S88°31'W 84.00' set T.C. Re-mon. tag & spike in N. face of p. pole.
Nw'ly 24.0' centerline railroad tracks.
South 40' centerline Meyers Road to East.

Signed by [Signature]
Surveyor's Michigan License No. 23503

Date Dec. 6, 1993



APPROVED
12-8-93



COPY