

1993

COMMISSION

1993 REMONUMENTATION PROGRAM
LAND CORNER RECORDATION CERTIFICATE
Filing Requirement of Act 74, Mich. P.A. 1970
N. AKRON TOWNSHIP

RECEIVED FOR RECORDS
LIBERED NO. _____ PAGE NO. 31
FILED NO. N. Akron
93 DEC 10 AM 11:53
VIRGINIA K. COOPER
TUSCULA COUNTY
REGISTER DEEDS

For corners in

TUSCULA

(County)

Located in:

Corner Code #

- 1. Public Land Survey T 15N R 8E M-6
 T _____ R _____
 T _____ R _____
 T _____ R _____
- 2. Property Controlling S _____ T _____ R _____
 in Section S _____ T _____ R _____
- 3. Miscellaneous S _____ T _____ R _____
 Property in Sec. S _____ T _____ R _____

Register of Deeds Stamp & File Number

- 4. Lot No. _____, Recorded Plat _____
- 5. Private Claims _____

	A	B	C	D	E	F	G	H	I	J	K	L	M
2	6	5	4	3	2								
3													
4	7	8	9	10	11	12							
5													
6	18	17	16	15	14	13							
7													
8	19	20	21	22	23	24							
9													
10	30	29	28	27	26	25							
11													
12	31	32	33	34	35	36							
13													

I, Kenneth D. Dunton, in a field survey on Nov. 14, 19 93, do hereby certify that under requirements of P.A. 74, Michigan P.A. of 1970, the corner points mentioned in lines 1 and 2 above were in conformance with regulations and rules therefore as required in the current manual of survey instructions of the United States Department of the Interior, Bureau of Land Management or by a decree of a Court of Law and/or that the corner points mentioned in lines 3, 4 and 5 above were in conformance with the rules of the Michigan Board of Land Surveyors or by a Decree of a Court of Law; established, re-established, monumented, re-monumented, recovered, found as expressed below:

NOTE: Not more than 4 corners, all in the same town and range, may be recorded on this certificate.

A. Description of original monument and accessories and/or subsequent restoration:

1821 G.L.O. Notes
Joseph Wampler, D.S.
Set 1/2 mile post
Maple 8" N3°W 6.60'
Elm 20" S83°E 3.30'

Section A. continued
on back of form.

July 28, 1971 Act 74, T15N-R8E, Page 3 by Herbert J. Kobs, R.L.S. #14097. Set 1/2" pipe on East line of Section 13 at recorded distance North of 5/8" iron bar at S.E. corner of Section 13, (recorded dist. 2640.0') at intersection of old fence lines running South and West from point established. Nail & washer in 4" elm - S45°W 3.31', nail & washer in 8" poplar S5°W 20.05', nail & washer in 9" poplar S45°E 36.86'.

B. Description of corner evidence found and/or method applied in restoring or reestablishing corner:

Found and accepted 1/2" pipe per Act 74 & Surveys of Record.

C. Description of monument for corner and accessories established to perpetuate locating the position of the corner:

Removed 1/2" x 24" pipe & placed standard concrete monument with 2" brass cap stamped corner M-6, T15N-R8E.

N84°08'W 43.59' set 1/2" x 24" re-rod & cap #23503 on N. ditch bank.

S06°50'W 45.04' apparent corner A-8, T15N-R9E, found 3/4" pipe.

South 15' centerline of drain.

West 1' set carsonite fiber survey point witness post.

N85°33'E 37.38' set T.C. Re-mon. tag & spike over spike found in NW face 10" elm.

S71°22'E 16.16' set T.C. Re-mon. tag & spike over spike found in N. face 7" ash.

S05°32'E 2.42' set T.C. Re-mon. tag & spike in W. face 5" ash.

N89°23'W 40.16' set T.C. Re-mon. tag & spike in N. face 10" elm.

Signed by

[Signature]

Date Dec. 6, 1993

Surveyor's Michigan License No.

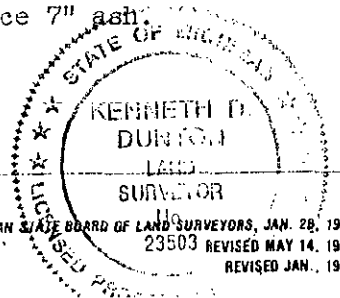
23503

APPROVED

12-9-93

[Signature]

COPY



Section A. continued from front of form:

Aug. 2, 1971 Survey Liber 1, Page 228 by Herbert J. Kobs, R.L.S. #14097. 1/2" pipe. Accessories same as Act 74, T15N-R8E, Page 3.

Dec. 3, 1974 Survey Liber 450, Page 591 by James A. Beck, R.L.S. #21559. 1/2" pipe. Accessories same as Act 74, T15N-R8E, Page 3.

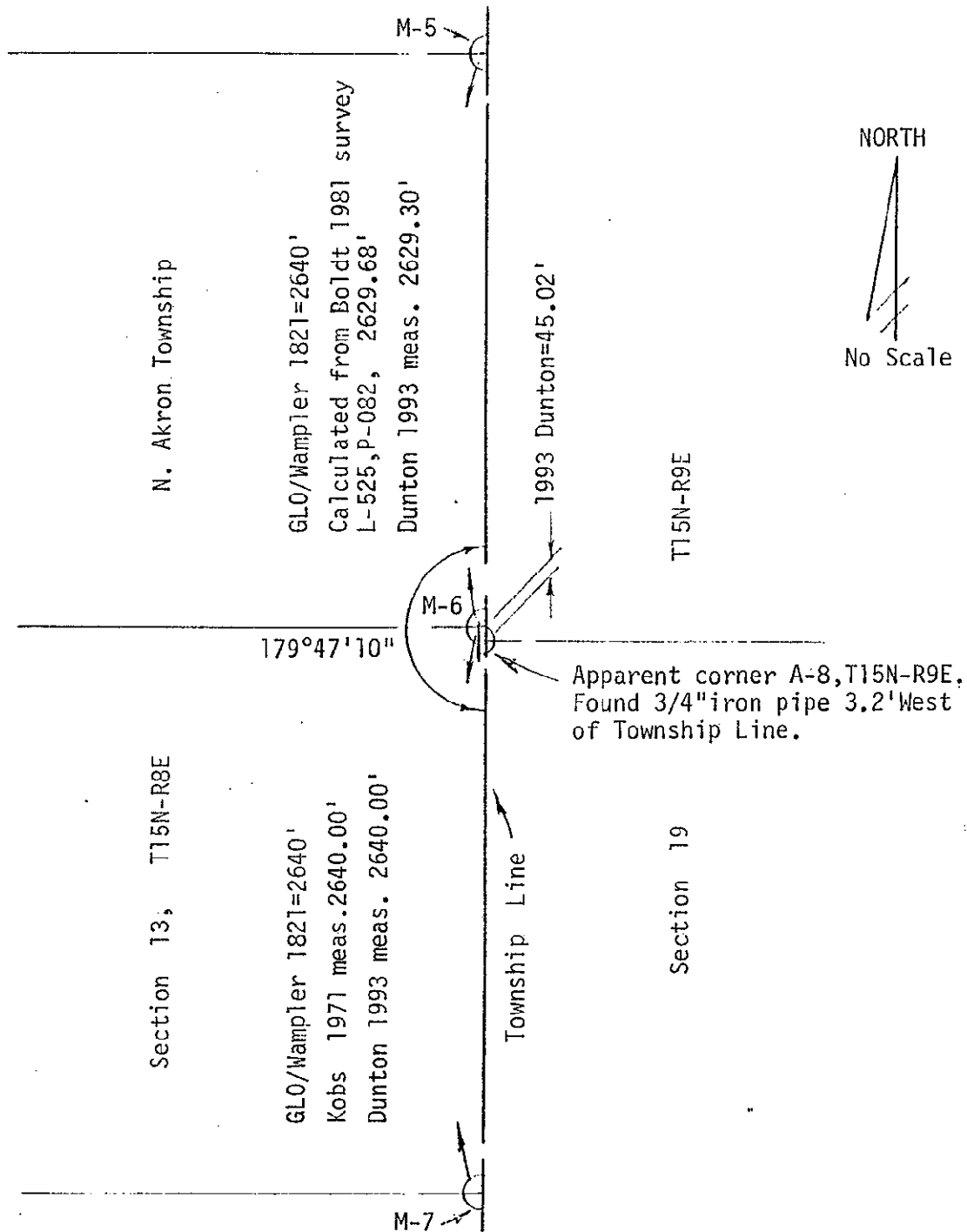
Sept. 18, 1979 Survey Liber 501, Page 966 by James L. Quist, R.L.S. #25868. 1/2" pipe.
 Nail in 4" elm stump S45°W 3.31'.
 Nail in 9" poplar S45°E 36.86'.
 Nail & flagging in face 18" ash West 50.8'.

Oct. 8, 1979 Survey Liber 503, Page 1245 by Earl E. Gravlin, R.L.S. #23510. 1/2" pipe. Accessories same as Survey Liber 501, Page 966.

Mar. 30, 1982 Survey Liber 525, Pages 82 & 83 by Richard R. Bolt, R.L.S. #28405. No mention of object found or set or accessories to corner.

Jan. 31, 1986 Survey Liber 558, Page 1499 by Earl E. Gravlin, R.L.S. #23510. 1/2" pipe. Accessories same as Survey Liber 501, Page 966.

April 12, 1988 Survey Liber 585, Page 1466 by Earl E. Gravlin, R.L.S. #23510. 1/2" pipe. Accessories same as Survey Liber 501, Page 966.



COPY