

1993

COMMISSION

1993 REMONUMENTATION PROGRAM
LAND CORNER RECORDATION CERTIFICATE
Filing Requirement of Act 74, Mich. P.A. 1970
N. AKRON TOWNSHIP

For corners in
TUSCOLA
(County)

Located In: Corner Code #

- 1. Public Land Survey T 15N R 8E M-10
T R
T R
T R
- 2. Property Controlling S T R
in Section S T R
- 3. Miscellaneous S T R
Property in Sec. S T R

RECEIVED
LIBERATION PAGE NO 27
93 DEC 10 AM 11:55
REGISTERED DEEDS

Register of Deeds Stamp & File Number

- 4. Lot No. _____, Recorded Plat _____
- 5. Private Claims _____

	A	B	C	D	E	F	G	H	I	J	K	L	M
2	6		5		4		3		2		1		
3													
4	7		8		9		10		11		12		
5													
6	18		17		16		15		14		13		
7													
8	19		20		21		22		23		24		
9													
10	30		29		28		27		26		25		
11													
12	31		32		33		34		35		36		
13													

I, Kenneth D. Dunton in a field survey on Sept. 6, 19 93, do hereby certify that under requirements of P.A. 74, Michigan P.A. of 1970, the corner points mentioned in lines 1 and 2 above were in conformance with regulations and rules therefore as required in the current manual of survey instructions of the United States Department of the Interior, Bureau of Land Management or by a decree of a Court of Law and/or that the corner points mentioned in lines 3, 4 and 5 above were in conformance with the rules of the Michigan Board of Land Surveyors or by a Decree of a Court of Law; established, re-established, monumented, re-monumented, recovered, found as expressed below:

NOTE: Not more than 4 corners, all in the same town and range, may be recorded on this certificate.

A. Description of original monument and accessories and/or subsequent restoration:

<p>1821 G.L.O. Notes Joseph Wampler, D.S. Set 1/2 mile post Beech 8" S67°E 2.64' Sugar 13" N16°W 14.52'</p>	<p>Nov. 21, 1893 Survey of Section 25, T15N-R8E by G. B. Felton, County Surveyor. Set from measure; by mistake was planted 2 links too far East. Cedar post, small stones & crockery at corner. Meas. 39.78 chains (2625.48') to corners M-9 & M-11.</p>
---	--

B. Description of corner evidence found and/or method applied in restoring or reestablishing corner:

Found no physical evidence at site.
Chiseled "+" in concrete pavement, established by single proportion measure & on line between corner M-9 & M-11 @ 2625.58' per 1/2 mile measure.

Note: Sketch on reverse side of form.

COPY

C. Description of monument for corner and accessories established to perpetuate locating the position of the corner:

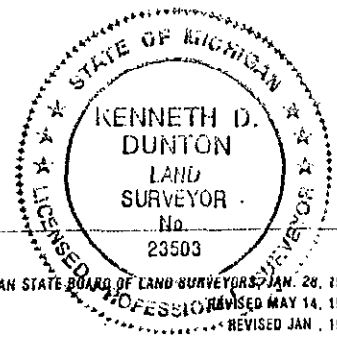
Set standard concrete monument with 2" brass cap stamped corner M-10, T15N-R8E @ location of "+" in conc. pavement.
N35°46'E 48.51' set 1/2" x 24" re-rod & cap #23503 in road shoulder.
N50°38'E 25.18' set 1/2" x 24" re-rod & cap #23503 in road shoulder.
S72°56'E 27.25' set 1/2" x 24" re-rod & cap #23503 in road shoulder.
N56°20'W 76.42' set T. C. Re-mon. tag & spike in S. face guy pole.
S87°03'W 61.85' chiseled "+" atop conc. R/W marker.
N55°14'W 77.81' chiseled "+" atop conc. R/W marker.

Signed by [Signature]

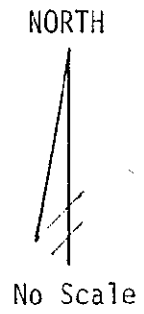
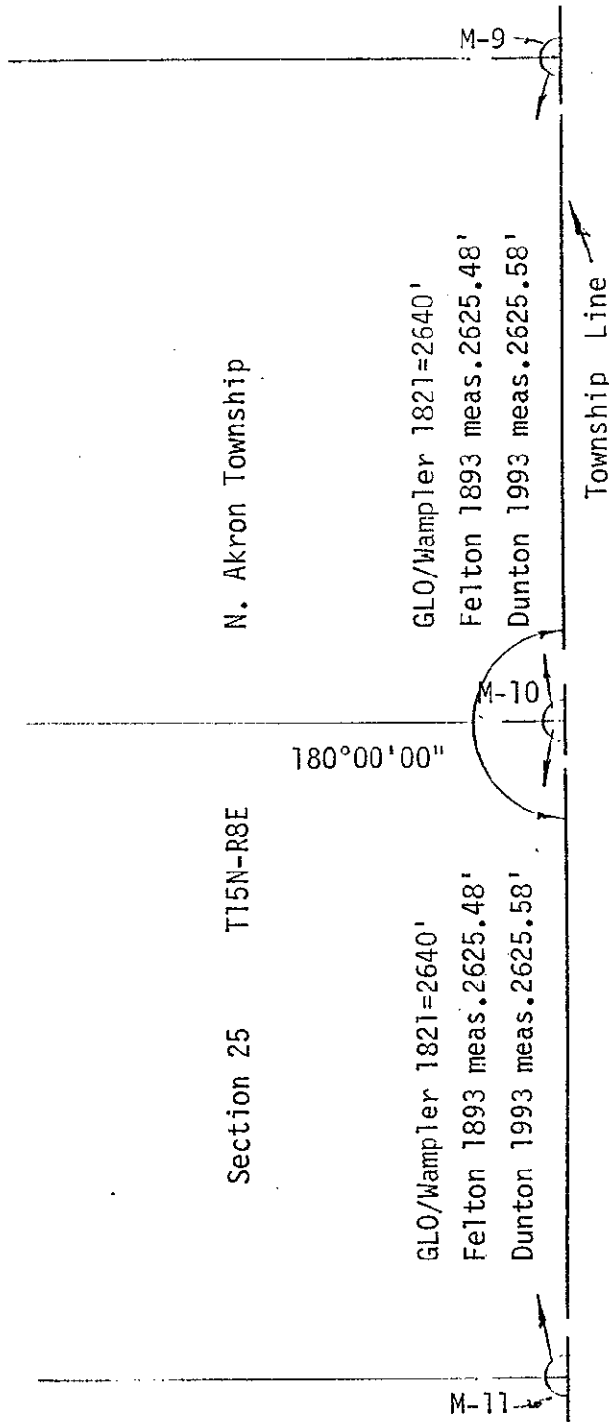
Date Dec. 6, 1993

Surveyor's Michigan License No. 23503

APPROVED
12-6-93



COPY



Found no evidence of corner A-12, T15N-R9E