

JAN 17 1996 VAN BUREN COUNTY REMONUMENTATION PROGRAM

DEC 22 9 20 AM '95

COMMISSION LAND CORNER RECORDATION CERTIFICATE
Waverly Twp. Filing Requirement of Act 74, Mich. P.A. 1970

For corners in Van Buren

Mark A. Smith 7.00
VAN BUREN CO. REGISTER OF DEEDS

Table with columns: (County), Located In: (T 2S., R 14W.), Corner Code # (G-5). Rows include Public Land Survey, Property Controlling in Section, and Miscellaneous Property in Sec.

Liber 4 Page 337

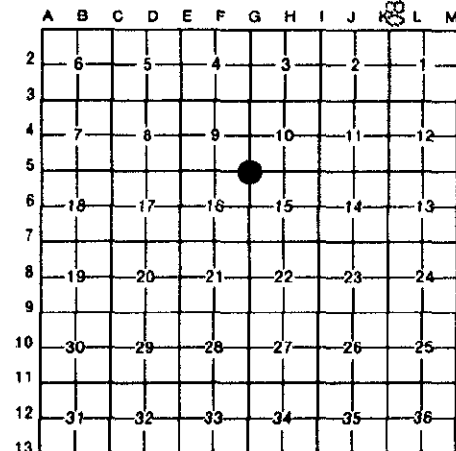
Register of Deeds Stamp & File Number

1222 0101 10SURVEY

- 4. Lot No. Recorded Plat
5. Private Claims

John C. Hunt, P.S. December 3 95

I, in a field survey on 19 do hereby certify that under requirements of P.A. 74, Michigan P.A. of 1970, the corner points mentioned in lines 1 and 2 above were in conformance with regulations and rules therefore as required in the current manual of survey instructions of the United States Department of the Interior, Bureau of Land Management or by a decree of a Court of Law and/or that the corner points mentioned in lines 3, 4 and 5 above were in conformance with the rules of the Michigan Board of Land Surveyors or by a Decree of a Court of Law; established, re-established, monumented, re-monumented, recovered, found as expressed below.



NOTE: Not more than 4 corners, all in the same town and range, may be recorded on this certificate.

A. Description of original monument and accessories and/or subsequent restoration:

G-5 4/30/1830 Gov. GW Harrison DS: Set 1/4 section post, wit.: 8" red oak N 9.90', 5" white oak S64°30'W 9.90'. No old info in County Surveyor's office. 1948 Mich. Dept. of Transportation right-of-way book shows no corner. 12/11/1985 DR Gilchrist CS Sec. 15, set PK nail shown on survey drawing, meas. W 2656.94', E 2639.07' & cont. E 2627.40' for total of 5266.47'. Dist. from SW cor. to W 1/4 post is 2647.38': extended line & doubled distance to set NW corner. 1/14/1986 LCRC L.3 p.95 shows PK nail & witnesses. 5/28/1987 JC Hunt PS, sec. 15 shows cor. on drawing. 1989 Mich. Dept. of Transportation shows monument box. 10/14/1995 DR Gilchrist CS field checked corner & fd. iron in mon box.

B. Description of corner evidence found and/or method applied in restoring or reestablishing corner:

G-5 Corner common to Sections 9, 10, 15, & 16 T2S-R14W Waverly Township: Found Harrison marker in monument box 7.80' South of centerline of M-43 Highway and 6.5' West of centerline of 40th St. to South. Measured Sly 2647.38' to W 1/4 post of Sec. 15, T2S-R14W & measured Easterly 1979.30' to East line of survey by Alpha Eng., Inc., dated 12/11/85.

THIS GOVERNMENT MONUMENT WAS RESTORED WITH APPROVAL OF THE VAN BUREN COUNTY REMONUMENTATION PEER GROUP OF SURVEYORS AT A MEETING HELD ON OCTOBER 25, 1995, AND IS ACCEPTED AS A CAREFUL AND FAITHFUL REESTABLISHMENT OF THE POSITION OF THE ORIGINAL CORNER.

Ratified by Peer Group in accordance with P.A. 345 of 1990 Van Buren County Surveyor

Date 10-25-95 D. R. G.

C. Description of monument for corner and accessories established to perpetuate locating the position of the corner:

G-5 HARRISON MARKER IN MONUMENT BOX. S32°E 56.43' Set nail & washer in East face of pole. S15°30'E 169.50' Set nail & washer in West face of pole. S75°30'E 218.00' Set nail & washer in North face of pole. N14°30'W 67.93' Set nail & washer in East face of pole.



Signed by John C. Hunt, P.S. Date December 3, 1995
Surveyor's Michigan License No. 23513