

Van Buren County Remonumentation Program Dec 20 2 47 PM '96

LAND CORNER RECORDATION CERTIFICATE

Filing Requirement of Act 74, Mich. P.A. 1970

Section Corner 21,22,27,28

For corners in Arlington Township

Van Buren (County)

Located In:

Corner Code #

- 1. Public Land Survey T 2S R 15W 69
2. Property Controlling in Section S T R 12/20/96
3. Miscellaneous Property in Sec. S T R 12/20/96

Mark A. Smith VAN BUREN CO REGISTERED SURVEYOR

7-00

401 12/20 0101 10SURVEY

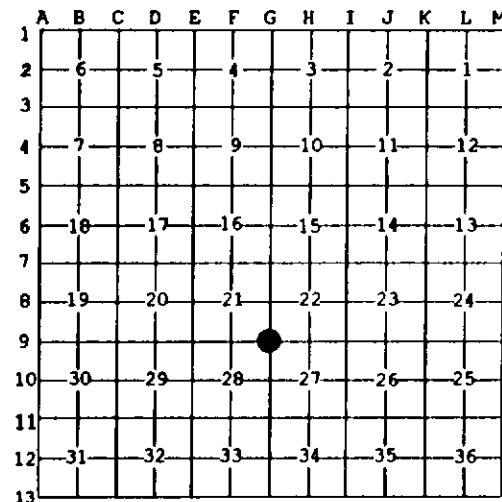
Liber 4 Page 490

Register of Deeds Stamp & File Number

- 4. Lot No. Recorded Plat
5. Private Claims

I, Gary C. Bilow, in a field survey on 5/28, 1993 do hereby state that under requirements of P.A. 74, Michigan P.A. of 1970, the corner points mentioned in lines 1 and 2 above were in conformance with regulations and rules therefore as required in the current manual of survey instructions of the United States Department of the Interior, Bureau of Land Management or by a decree of a Court of Law and for that the corner points mentioned in lines 3, 4 and 5 above were in conformance with the rules of the Michigan Board of Land Surveyors or by a Decree of a Court of Law, established, re-established, monumented, recovered, found as expressed below.

NOTE: Not more than 2 corners, all in the same town and range, may be recorded on this certificate.



A. Description of original monument and accessories and/or subsequent restoration: Post established by U.S. Deputy Surveyor G. Harrison in 1830 - accessories: Beech 24 S44E 39 links and Elm 26 N65W 36 links. County Surveyor A.J. Pierce in 1870 in Volume 4 Page 33 "Found old stake set probably by C.J. Monroe - wits agreed." John Hunt (PS #23513) recorded an Act 74 Record in 1977 in Liber 2 Page 493 "Found 1/2" iron rod - accessories: NW 53.1' Nail & Washer in 16" Maple, SE 33.25' Street Sign Post, and SE 79.7' Nail & Washer in 6" Pine." George Mitchell (PS #19618) performed an unrecorded Act 132 Survey in 1980 noting "Found 3/4" pipe - accessories: NW 53.1' Stump, SE 35.5' Street Sign, WSW 51.4' Stop Sign, and West 5.0' Centerline North/South road."

B. Description of corner evidence found and/or method applied in restoring or reestablishing corner: Found pole barn spike, one(1) of Hunt's accessories and two(2) of Mitchell's accessories. Distances to adjacent corners were reasonable consistent. Accepted spike as the best evidence of the original GLO post.

THIS GOVERNMENT MONUMENT WAS RESTORED WITH THE APPROVAL OF THE VAN BUREN COUNTY REMONUMENTAION PEER GROUP OF SURVEYORS AT A MEETING HELD SEPTEMBER 25, 1996, AND IS ACCEPTED AS A CAREFUL AND FAITHFUL PERPETUATION OF THE POSITION OF THE ORIGINAL CORNER.

C. Description of monument for corner and accessories established to perpetuate locating the position of the corner: Replaced spike with Harrison Marker on 12/19/96.

- N 73°E 45.5' Stop/Street Sign Post
WSW 51.4' Stop Sign Post
S37°W 86.01' Nail & Tag in Power Pole
West 5' Centerline 52nd Street



Signed by Gary C. Bilow 26453
Surveyor's Michigan License No.

Date December 19, 1996