

DEC 18 9 35 AM '96

SW. COR. SEC 14

LAND CORNER RECORDATION CERTIFICATE

Filing Requirement of Act 74, Mich. P.A. 1970

Porter Township
For corners in Van Buren
(County)

Located In:

Corner Code #

Mark A. Smith
VAN BUREN CO.
REGISTERED SURVEYOR

9-00

- 1. Public Land Survey T 4S. R 13W. 1-7
- T _____ R _____
- T _____ R _____
- T _____ R _____
- 2. Property Controlling S _____ T _____ R _____
- in Section S _____ T _____ R _____
- 3. Miscellaneous S _____ T _____ R _____
- Property in Section S _____ T _____ R _____

SURVEY &
REMONUMENTATION

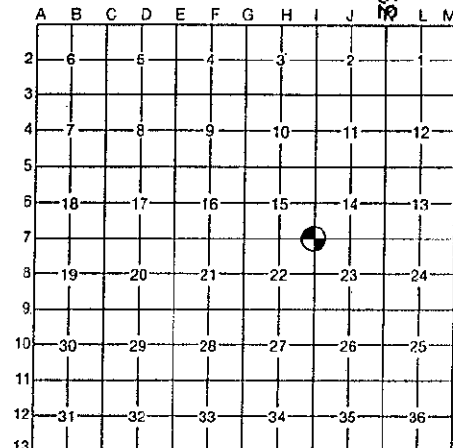
MAY 16 1997

INDEX PAGE 459

Register of Deeds Stamp & File Number

12/18 0101 105 SURVEY

- 4. Lot No. _____, Recorded Plat _____
- 5. Private Claims _____
- 6. IWM Job #26069-94



I, Allen H. McMachen, in a field survey on December 12, 19 96, do hereby certify that under requirements of P.A. 74, Michigan P.A. of 1970, the corner points mentioned in lines 1 and 2 above were in conformance with regulations and rules therefore as required in the current manual of survey instructions of the United States Department of the Interior, Bureau of Land Management or by a decree of a Court of Law and/or that the corner points mentioned in lines 3, 4 and 5 above were in conformance with the rules of the Michigan Board of Professional Surveyors or by a Decree of a Court of Law; established, re-established, monumented, re-monumented, recovered, found as expressed below:

NOTE: Not more than 4 corners, all in the same town and range, may be recorded on this certificate.

A. Description of original monument and accessories and/or subsequent restoration:

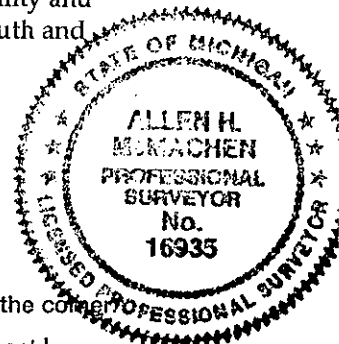
- 1830 - E.H. Lytle, D.S., Set post in lake, Set post on South margin at 66 ch. (4356.00')
- 1946 - T.A. Smith, C.S., Used corner 151.85' West to plat monument on Section line, Angle West to North is 89° 17',
- 1968 - D.R. Gilchrist, R.L.S., "Found 4" pipe filled with concrete, 4" high", Measured West 151.85' to plat monument,
- 1973 - W.Q. Smith, C.S., Found 4" pipe filled with concrete, pipe is 85' into swamp, pipe is 403' E. of centerline road to subdivision
- 1973 - D.A. Middleton, R.L.S. (Smith & Smith, Inc.), L.C.R.C. rec. L. 2, Pg. 83, Found 4" pipe filled with concrete, pipe is 85' into swamp, Pipe is 403' East of centerline road to subdivision, Pipe is 151.85' East of plat monument, Section line fence to West of road to subdivision, Pipe is 4' above ground

B. Description of corner evidence found and/or method applied in restoring or reestablishing corner:

Found 4" pipe in lake (water 3' - 4' deep) in unstable condition. Previously found plat monument to West is also underwater and not recovered. 4" pipe was ratified by the Van Buren County Remonumentation Peer group on 11/29/95 and is accepted as the best available evidence of the position of the corner. Due to the instability and inaccessibility of 4" pipe in lake said Peer Group authorized placement of (2) meander corners, one South and one East of pipe. (see sketch on reverse).

Ratified by Peer Group in accordance with P.A. 345 of 1990
Van Buren County Surveyor

Date 12/18/96 D. R. G.



C. Description of monument for corner and accessories established to perpetuate locating the position of the corner:
4" pipe in water was left intact. Standard Van Buren County Remonumentation monuments and monument boxes were placed at meander corners 1264.95' South and 1528.97' East of pipe (see sketch on reverse).

Accessories for meander corner South of 4" pipe

- Nail & Tab in East Side 18" Oak S. 10° W. 39.50'
- Nail & Tab in East Side 8" Oak S. 18° E. 49.95'
- Nail & Tab in North Side 10" Twin Oak N. 88° E. 35.47'
- Nail & Tab in West Side 14" Hickory N. 18° E. 9.98'
- 9' North of North edge pavement

Accessories for meander corner East of 4" pipe

- Nail & Tab in East Side 10" Oak N. 22° E. 19.30'
- Nail & Tab in South Side 14" Walnut N. 85° W. 41.90'
- Nail & Tab in Southeast Side 8" Walnut S. 50° W. 65.85'
- Nail & Tab in South Side 10" Aspen N. 80° E. 143.15'
- 19.5' West of West edge pavement

Signed by Allen H. McMachen
Surveyor's Michigan License No. 16935

Date 12/16/96

N.W. CORNER,
SEC. 23,
PORTER TWP.
RATIFIED 11-29-95

N. 1/4 CORNER,
SEC. 23,
PORTER TWP.
RATIFIED 11-29-95

BANKSON
LAKE

S. 89°-44'-38" E.

1528.97'

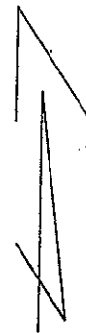
1100.00'

1264.95'

S. 0°-46'-05" E.

1380.98'

N. 50°-13'-58" E. 1967.09'



SCALE: 1" = 400'

W. 1/4 CORNER,
SEC. 23,
PORTER TWP.
RATIFIED 11-29-95