

SURVEY &  
REMONUMENTATION

RC 1547

11/11/1995

L127800PA033

COMMISSION

LAND CORNER RECORDATION CERTIFICATE  
Filing Requirement of Act 74, Mich. P.A. 1970

For corners in

WAYNE (County)	Located In:	Corner Code #
1. Public Land Survey	T <u>1 S</u> R <u>B E</u>	<u>G-5</u>
	T _____ R _____	_____
	T _____ R _____	_____
	T _____ R _____	_____
2. Property controlling In Section	S _____ T _____ R _____	_____
	S _____ T _____ R _____	_____
3. Miscellaneous Property in Sec.	S _____ T _____ R _____	_____
	S _____ T _____ R _____	_____
4. Lot No. _____, Recorded Plat _____		
5. Private Claims _____		

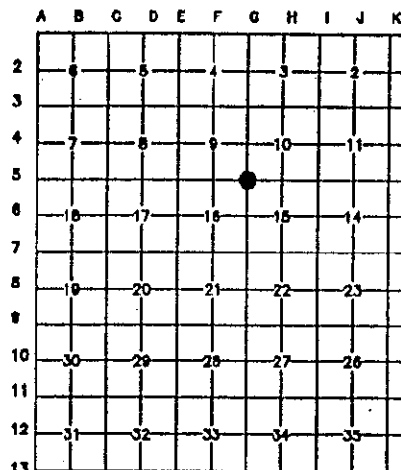
Compliance with  
ACT 345, P.A. 1990

APPROVED ON: 12-14-94  
WAYNE COUNTY REMONUMENTATION  
PEER GROUP COMMITTEE

Register of Deeds Stamp & File Number

I, PAUL V. SCHWIMMER, in a field survey on DECEMBER 9, 19 94, do hereby certify that under requirements of P.A. 74, Michigan P.A. of 1970, the corner points mentioned in lines 1 and 2 above were in conformance with regulations and rules therefore as required in the current manual of survey instructions of the United States Department of the Interior, Bureau of Land Management or by decree of a Court of Law and/or that the corner points mentioned in lines 3, 4 and 5 above were in conformance with the rules of the Michigan Board of Land Surveyors or by Decree of a Court of Law; established, re-established, monumented, re-monumented, recovered, found as expressed below:

NOTE: Not more than 4 corners, all in the same town and range, may be recorded on this certificate



A. Description of original monument and accessories and/or subsequent restoration:

DRIG. GOVERNMENT NOTES 1815, WITNESSED BY BALESS JIMMINGS - SET POST (1)	BOARD OF WAYNE CO. RD. COMM MONUMENT FND IN 1974 (9)
BEECH 12" S69°E 12 LINKS (2)	NLY 60.28 MONUMENT (10)
ASH 7" N05°W 78 LINKS (3)	N.E. 64.54 TACKED HUB (11)
WAYNE CO. BUREAU OF TAXATION (1930'S) STONE (4)	SLY 32.31 NAIL W/ W.C.R.C. TAG IN DE POLE (12)
NLY 31.48 TELE POLE (5)	S.W. 67.77 NAIL W/ W.C.R.C. TAG IN FENCE POST (13)
S.E. 41.23 8' APPLE (6)	S.W. 71.74 NAIL W/ W.C.R.C. TAG IN DE POLE (14)
SLY 42.57 6' ELM (7)	N.W. 32.97 MONUMENT (15)
N.W. 49.78 6' ELM (8)	

CONTINUED ON BACK

B. Description of corner evidence and/or method applied in restoring or reestablishing corner:

G-5 ALTHOUGH ONLY TWO WITNESSES REMAIN FROM 1977 THE MEASURED DISTANCES TO G-4 AND H-5 VERIFY THE LOCATION OF THIS CORNER.



C. Description of monument for corner and accessories established to perpetuate locating the position of the corner:

G-5 FOUND STEEL ENCASED MONUMENT W/ 1" IRON PIPE RAISED WITH 1/2" IRON ROD 0.85' BELOW SURFACE OF GRAVEL ROAD

N00°E 32.99 CONC. MONUMENT (15)	\$ 16.00 MISCELLANEOUS RECORDING
S55°E 122.91 NAIL W/ W.C.R.C. TAG IN DE. POLE	28 DEC 94 8:16 A.M. RECEIPT# 4A
S05°W 67.90 NAIL W/ W.C.R.C. TAG IN FENCE POST (13)	RECORDED
S60°W 44.44 SLY END TOP CL 18" CONC. CULVERT	FOREST E. YOUNGLOOD, REGISTER OF DEEDS
S65°W 153.46 NAIL W/ W.C.R.C. TAG IN DE. POLE	WAYNE COUNTY, MI
N45°W 50.76 NLY END TOP CL 18" CONC. CULVERT	
MEASURED DIST TO G-4 @ 2513.28 AND RECORDED AS 2512.97 & 2508.95	
MEASURED DIST TO H-5 @ 2646.97 AND RECORDED AS 2646.44	

THE SELECTED LOCATION IS ACCEPTED BY THE CONTRACTOR AND IS GENERALLY ACCEPTED BY PROFESSIONAL SURVEYORS AS THE BEST AVAILABLE EVIDENCE OF THE POSITION OF THE ORIGINAL CORNER.

Signed by Paul V. Schwimmer  
Surveyor's Michigan License No. 24618

Date 12-21-94

2 R  
14  
MI

W.C.R.C. 1977

L127800PA034

BOARD OF WAYNE CO. RD. COMM  
#4 REBAR IN 3/4" PIPE IN CONC. MON FND 1977 (9)  
NE. 60.29 MONUMENT (10)  
S.E. 32.30 NAIL W/ W.C.R.C. TAG IN E. SIDE DE POLE (12)  
S.W. 67.76 NAIL W/ W.C.R.C. TAG IN FENCE POST (13)  
S.W. 71.75 NAIL W/ W.C.R.C. TAG IN N. SIDE DE POLE (14)  
N.W. 32.93 MONUMENT (15)

80 1241