

SURVEY & REMONUMENTATION

RC 1538

APR 25 1995

COMMISSION

LAND CORNER RECORDATION CERTIFICATE
Filing Requirement of Act 74, Mich. P.A. 1970

LI27800PA019

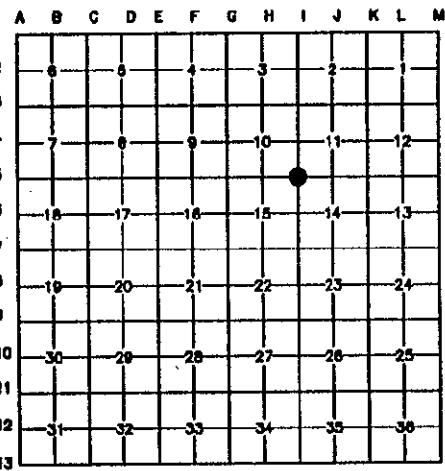
For corners in

<u>WAYNE</u> (County)	Located in:	Corner Code #
1. Public Land Survey	T <u>1 S R 8 E</u>	<u>I-5</u>
	T _____	_____
	T _____	_____
	T _____	_____
2. Property controlling in Section	S _____ T _____	R _____
	S _____ T _____	R _____
3. Miscellaneous Property in Sec.	S _____ T _____	R _____
	S _____ T _____	R _____
4. Lot No. _____, Recorded Plot _____		
5. Private Claims _____		

Compliance with ACT 345, P.A. 1990
 APPROVED ON: 12-14-94 *DPJ*
 WAYNE COUNTY REMONUMENTATION PEER GROUP COMMITTEE
 Register of Deeds Stamp & File Number

I, PAUL V. SCHWIMMER, in a field survey on DECEMBER 6, 1994, do hereby certify that under requirements of P.A. 74, Michigan P.A. of 1970, the corner points mentioned in lines 1 and 2 above were in conformance with regulations and rules therefore as required in the current manual of survey instructions of the United States Department of the Interior, Bureau of Land Management or by decree of a Court of Law and/or that the corner points mentioned in lines 3, 4 and 5 above were in conformance with the rules of the Michigan Board of Land Surveyors or by Decree of a Court of Law; established, re-established, monumented, re-monumented, recovered, found as expressed below:

NOTE: Not more than 4 corners, all in the same town and range, may be recorded on this certificate



A. Description of original monument and accessories and/or subsequent restoration:

ORIG. GOVERNMENT NOTES 1815, WITNESSED BY BALESS JIMMINGS - SET POST (1)
 5' ASH N52°W 20 LINKS (2)
 8' ELM S88°E 20 LINKS (3)

WAYNE CO. BUREAU OF TAXATION (1930'S) MONUMENT (4)
 N. 43.10 WITNESS MON. (5)
 N.E. 96.93 CROSS ON RAIL (6)
 S.E. 22.37 ROAD SIGN (7)
 S.E. 61.12 MONUMENT (8)
 S. 43.10 WITNESS MON. (10)
 S.W. 50.85 ED POLE (11)
 W. 26.42 MONUMENT (12)

BOARD OF WAYNE CO. RD. COMM MONUMENT FOUND IN 1970 (4)
 N. 43.05 MONUMENT (5)
 S.E. 98.88 "X" IN HAND RAIL (13)
 S.E. 34.32 12" LOCUST (14)
 S.W. 40.49 RR SPIKE IN 18' ELM (15)

RC 1538

B. Description of corner evidence and/or method applied in restoring or reestablishing corner:

I-5 FOUND STEEL ENCASED CONC. MONUMENT IN MONUMENT BOX. TOP OF MONUMENT IS 1.0' BELOW ROAD SURFACE. PREVIOUS WITNESSES (MONUMENTS NORTH AND SOUTH) AND A MEASURED DISTANCE TO H-5 INDICATE THAT THIS IS THE TRUE POSITION OF I-5.



C. Description of monument for corner and accessories established to perpetuate locating the position of the corner:

I-5 FOUND STEEL ENCASED MONUMENT IN MONUMENT BOX
 N00°E 43.03 CONC. MONUMENT (5)
 N53°E 105.42 N.W. CORNER OF NORTH BRIDGE WALL
 N90°E 97.86 S.W. CORNER OF SOUTH BRIDGE WALL
 S20°E 34.05 NAIL W/ W.C.R.C. TAG IN 18' LOCUST (14)
 S00°E 32.81 CONCRETE MONUMENT
 S27°W 28.60 NAIL W/ W.C.R.C. TAG IN 6' ELM
 S30°W 49.68 NAIL W/ W.C.R.C. TAG IN ED. POLE
 DIST MEASURED TO H-5 OF 2645.33 AND RECORDED AS 2644.53

\$ 13.00 MISCELLANEOUS RECORDING
 28 DEC 94 8:14 A.M. RECEIPT# 4A
 RECORDED
 FOREST E. YOUNGBLOOD, REGISTER OF DEEDS
 WAYNE COUNTY, MI

2 R
11 D
M:SC

THE SELECTED LOCATION IS ACCEPTED BY THE CONTRACTOR AND IS GENERALLY ACCEPTED BY PROFESSIONAL SURVEYORS AS THE BEST AVAILABLE EVIDENCE OF THE POSITION OF THE ORIGINAL CORNER.

Signed by Paul V. Schwimmer
 Surveyor's Michigan License No. 24618

Date 12-21-94