

DEC 29 1998

SURVEY & REMONUMENTATION

FILE DO NOT MAIL

LAND CORNER RECORDATION CERTIFICATE Filing Requirement of Act 74, Mich. P.A. 1970

MAR 02 1999

For corners in

SECTION

WAYNE

(County)

Located In: NORTHVILLE TWP. Corner Code #

1. Public Land Survey	T	<u>1</u> S	R	<u>8</u> E	<u>K-4</u>
	T		R		
	T		R		
	T		R		
2. Property controlling in Section	S		T		
	S		T		
3. Miscellaneous Property in Sec.	S		T		
	S		T		

Compliance with ACT 345, P.A. 1990

APPROVED ON: 12-8-98
WAYNE COUNTY REMONUMENTATION PEER GROUP COMMITTEE
Register of Deeds Stamp & File Number

- 4. Lot No. _____, Recorded Plot _____
- 5. Private Claims _____

I, CHRISTOPHER S. LAMUS, in a field survey on FEBRUARY 19, 1998, do hereby certify that under requirements of P.A. 74, Michigan P.A. of 1970, the corner points mentioned in lines 1 and 2 above were in conformance with regulations and rules therefore as required in the current manual of survey instructions of the United States Department of the Interior, Bureau of Land Management or by decree of a Court of Law and/or that the corner points mentioned in lines 3, 4 and 5 above were in conformance with the rules of the Michigan Board of Land Surveyors or by Decree of a Court of Law; established, re-established, monumented, re-monumented, recovered, found as expressed below:

NOTE: Not more than 4 corners, all in the same town and range, may be recorded on this certificate

A. Description of original monument and accessories and/or subsequent restoration:

ORIG. GOVERNMENT NOTES 1815
BY JOSEPH WAMPLER - SET POST
5" IRON S.62°W. 24 LINKS (1)
8" SUGAR N.67°E. 30 LINKS (2)

NO G.L.O. WITNESSES REMAIN

B. Description of corner evidence and/or method applied in restoring or reestablishing corner:

WAYNE CO. ROAD COMMISSION 1970
(K-4) FOUND IRON
WEST 17.0' 20" ELM (1) GONE
NORTH 36.18' C.L. FENCE POST (2) GONE

PUBLIC ACT 74 L.C.R.C. L.19868 P.533
(K-4) FOUND 1/2" IRON
N.25°W 55.54' P.K. 14" TREE(3) FOUND
N81°W 23.42' P.K. 12" TREE (4) GONE
S.1°41.E 37.47' P.K. 12" TREE (5) GONE

DISTANCE TO K-5 2027.58' (M) RECORDED AS 2027.09' BY AYRES,LEWIS,NORRIS&MAY,INC. NOV.,1995.
DISTANCE TO K-5 2027.58' (M) RECORDED AS 2027.09' BY WAYNE COUNTY BUREAU OF TAXATION.
DISTANCE TO K-3 2651.11' (M) RECORDED AS 2652.81' BY WAYNE COUNTY BUREAU OF TAXATION.

C. Description of monument for corner and accessories established to perpetuate locating the position of the corner:

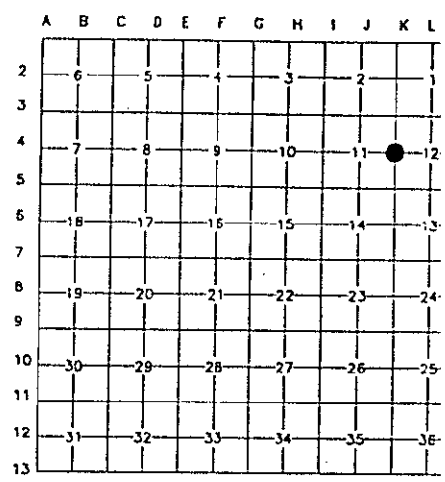
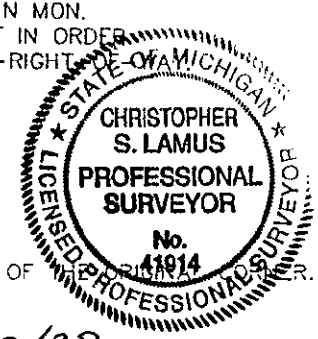
(K-4)
CONC. MONUMENT.
SET BRASS W.C. REMON WASHER AND SURVEYOR'S CAP #41914 OVER 1/2" IRON ROD IN MON.
1/2" IRON AS RECORDED ABOVE WAS REMOVED AND REPLACED WITH CONC. MONUMENT IN ORDER TO COMPLY WITH SUBDIVISION CONTROL ACT. CORNER IS NOT LOCATED IN ANY ROAD-RIGHT-OF-WAY.
N.9°E 40.10' SET W.C. REMON WASHER IN E.SIDE 15" ELM.
N.50°E 2.14' SET W.C. REMON WASHER IN S.SIDE 12" ELM
S7°W 7.35' SET W.C. REMON WASHER IN W SIDE U.POLE
N.3°W 55.97' SET W.C. REMON WASHER IN SW SIDE 24" OAK (3)
N.20°W 74.79' SET W.C. REMON WASHER IN SW SIDE 35" OAK

THE SELECTED LOCATION IS A CAREFUL AND FAITHFUL PERPETUATION OF THE POSITION OF

Signed by Christopher S. Lamus
Surveyor's Michigan License No. 41914

Date 12/29/98

R LCR 7 4R 1P6 U. DPJ



Libert-30035
Page-2506.0
98458548LS
12/29/1998 11:50AM