

FILE DO NOT MOVE
SURVEY & REMONUMENTATION

MAR 17 1998

LAND CORNER RECORDATION CERTIFICATE
Filing Requirement of Act 74, Mich. P.A. 1970

For corners in

WAYNE SECTION Located In: PLYMOUTH TWP. Corner Code #

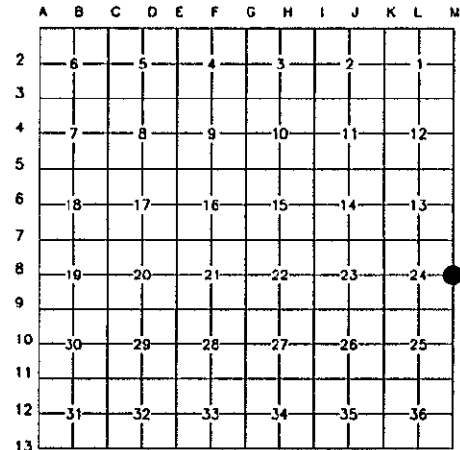
- | | | | | | |
|------------------------------------|---|------------|---|------------|------------|
| 1. Public Land Survey | T | <u>1 S</u> | R | <u>8 E</u> | <u>M-8</u> |
| | T | | R | | |
| | T | | R | | |
| | T | | R | | |
| 2. Property controlling in Section | S | | T | | |
| | S | | T | | |
| 3. Miscellaneous Property in Sec. | S | | T | | |
| | S | | T | | |
4. Lot No. _____, Recorded Plat _____
5. Private Claims _____

Compliance with
ACT 345, P.A. 1990
APPROVED ON: 12-8-97 *DPZ*
WAYNE COUNTY REMONUMENTATION
PEER GROUP COMMITTEE

Register of Deeds Stamp & File Number

I, CHRISTOPHER S. LAMUS, in a field survey on DECEMBER 3, 19 97
do hereby certify that under requirements of P.A. 74, Michigan P.A. of 1970, the corner points mentioned in lines 1 and 2 above were in conformance with regulations and rules therefore as required in the current manual of survey instructions of the United States Department of the Interior, Bureau of Land Management or by decree of a Court of Law and/or that the corner points mentioned in lines 3,4 and 5 above were in conformance with the rules of the Michigan Board of Land Surveyors or by Decree of a Court of Law; established, re-established, monumented, re-monumented, recovered, found as expressed below:

NOTE: Not more than 4 corners, all in the same town and range, may be recorded on this certificate



A. Description of original monument and accessories and/or subsequent restoration:

ORIG. GOVERNMENT NOTES 1815
BY JOSEPH WAMPLER - SET POST
14" BEECH S.45°E. 34 LINKS (1)
13" LYNN N22°W. 36 LINKS (2)

NO G.L.O. WITNESSES REMAIN

B. Description of corner evidence and/or method applied in restoring or reestablishing corner:

W.C.R.C. MARCH 1970
MONUMENT
EAST 32.97' MONUMENT (3) GONE
SE 83.44' MONUMENT (4) GONE
SOUTH 67.37' MONUMENT, W 1/4 LIVONIA TWP., SEC. 19 (5)
SW 40.13' IRON (6)
SW'LY 62.89' DETROIT EDISON POWER POLE (7)
WEST 33.03' MONUMENT (8)

\$7.00 DEED

RECORDED
FREDERICK YOUNGBLOOD, REGISTER OF DEEDS
WAYNE COUNTY, MI
Receipt #41910

\$4.00 REMONUMENTATION

DISTANCE TO M-7 2643.76' (M) RECORDED AS 2644.23' BY WAYNE COUNTY BUREAU OF TAXATION.
DISTANCE TO M-9 2672.29' (M) RECORDED AS 2672.22' BY WAYNE COUNTY BUREAU OF TAXATION.
DISTANCE TO L-8 2628.53' (M) RECORDED AS 2629.19' BY WAYNE COUNTY BUREAU OF TAXATION.

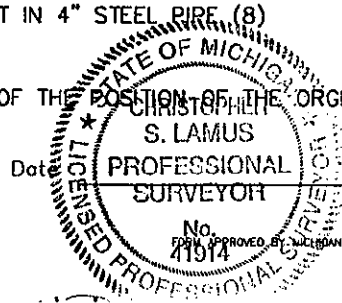
C. Description of monument for corner and accessories established to perpetuate locating the position of the corner:

M-8
FOUND 1" IRON PIPE IN CONCRETE ENCASED IN 4" STEEL PIPE LEANING SOUTHEASTERLY.
REPLACED WITH 3/4" X 4' IRON ROD PER WITNESSES. SET SURVEYOR'S CAP #41914 OVER BRASS W.C. REMON WASHER.
SET ROUND MONUMENT BOX. MONUMENT IS LOCATED IN THE RIGHT-OF-WAY OF ECKLES ROAD AT CENTERLINE IN A CONCRETE ROAD SURFACE.

N.64°E. 34.83' 5/8" REBAR IN CONCRETE MONUMENT
S.22°W. 67.33' MONUMENT, W 1/4 LIVONIA TWP., SEC. 19 (5)
S.76°W. 62.88' PK NAIL IN BRASS WASHER IN S. FACE OF DETROIT EDISON POWER POLE (7)
N.86°W. 33.08' 1" IRON PIPE IN CONCRETE MONUMENT IN 4" STEEL PIPE (8)
S.64°W. 40.51' FOUND IRON PIPE (6)
S.14°E. 73.57' FOUND IRON ROD

THE SELECTED LOCATION IS A CAREFUL AND FAITHFUL PERPETUATION OF THE POSITION OF THE ORIGINAL CORNER.

Signed by *Christopher S. Lamus*
Surveyor's Michigan License No. 41914



Date 12/11/97

R-108 7-48 104