

FILE DO NOT MAIL

SURVEY & REMONUMENTATION
LAND CORNER RECORDATION CERTIFICATE
Filing Requirement of Act 74, Mich. P.A. 1970

MAR 17 1998

For corners in

WAYNE

(County)

Located In:
LIVONIA TOWNSHIP

Corner Code #

1. Public Land Survey

T 1S R 9E E-12

T _____ R _____

T _____ R _____

T _____ R _____

2. Property Controlling in Section

S _____ T _____ R _____

S _____ T _____ R _____

3. Miscellaneous Property in Sec.

S _____ T _____ R _____

S _____ T _____ R _____

SECTION

Compliance with
ACT 345, P.A. 1990

APPROVED ON: 12-8-97
WAYNE COUNTY REMONUMENTATION
PEER GROUP COMMITTEE
Register of Deeds Stamp & File Number

4. Lot No. _____, Recorded Plat _____

5. Private Claims _____

I, PAUL V. SCHWIMMER, in a field survey on OCT 19, 19 97 do hereby state that under requirements of P.A. 74, Michigan P.A. of 1970, the corner points mentioned in lines 1 and 2 above were in conformance with regulations and rules therefore as required in the current manual of survey instructions of the United States Department of the Interior, Bureau of Land Management or by a decree of a Court of Law and/or that the corner points mentioned in lines 3, 4 and 5 above were in conformance with the rules of the Michigan Board of Land Surveyors or by a Decree of a Court of Law; established, re-established, monumented, recovered, found as expressed below:

NOTE: Not more than 2 corners, all in the same town and range, may be recorded on this certificate.

A	B	C	D	E	F	G	H	I	J	K	L	M
1												
2	6	5	4	3	2	1						
3												
4	7	8	9	10	11	12						
5												
6	18	17	16	15	14	13						
7												
8	19	20	21	22	23	24						
9												
10	30	29	28	27	26	25						
11												
12	31	32	33	34	35	36						
13												

A. Description of original monument and accessories and/or subsequent restoration:

GOVERNMENT LAND OFFICE (1830'S) SET 1/4 POST
LYMM 9" N 27°W 7 LINKS (1) (GONE)
ELM 6" S 84°W 12 LINKS (2) (GONE)

1930'S WAYNE COUNTY BUREAU OF TAXATION WITNESSES;
SET IRON

S.W. 99.76' 18" ELM (3) (GONE)

W.N.W. 86.23' 10" ELM (4) (GONE)

N.W. 49.00' 14" ELM (5) (GONE)

N.N.W. 69.10' 12" ELM (6) (GONE)

FENCE LINES RUNNING WEST AND SOUTH (7) (GONE)

B. Description of corner evidence found and/or method applied in restoring or reestablishing corner:

THE POSITION OF E-12 HAS BEEN OBLITERATED BY A BRICK HOUSE AT #35346 HATHAWAY AVE, CITY OF LIVONIA. I TRAVERSED TO ALL OF THE ADJOINING CORNERS (D12, F12, E11, E13), AND AFTER SURVEYING LOT 352 OF COUNTRY HOMES SUBDIVISION NO. 2, AS RECORDED IN LIBER 77, PAGE 59, WAYNE COUNTY RECORDS, I SET 3/4" X 18" IRON PIPES AT THE INTERSECTIONS OF THE SECTION LINES AND THE LOT LINES. THE IRONS ARE CAPPED WITH WAYNE COUNTY REMONUMENTATION BRASS DISKS AND PLASTIC PLUGS. I AM SATISFIED THAT THE ANGLES AND DISTANCES THAT I MEASURED CORRECTLY RE-POSITION THIS CORNER IN RELATION TO THE 1930'S PUBLIC LAND SURVEY SYSTEM SECTION SURVEYS. SEE SKETCH ON BACK FOR WITNESSES TO THESE ACCESSORY POINTS.

SEE SKETCH ON BACK

\$10.00 DEED



RECORDED
FOREST E. YOUNGBLOOD, REGISTER OF DEEDS
WAYNE COUNTY, MI

Receipt #43171

C. Description of monument for corner and accessories established to perpetuate locating the position of the corner:

THE ACTUAL POSITION OF E-12 CANNOT BE OCCUPIED. IT HAS BEEN PERPETUATED BY FOUR IRON PIPES SET ON THE INTERSECTION OF THE SECTION LINES AND THE LOT LINES OF LOT 352, COUNTRY HOMES SUBDIVISION NO. 2, CITY OF LIVONIA. THE HOUSE AT #35346 HATHAWAY AVE. OCCUPIES THIS CORNER.

NORTH 74.60' SET IRON PIPE ON NORTH LINE OF LOT 352

EAST 38.00' SET IRON PIPE ON EAST LINE OF LOT 352

SOUTH 50.40' SET IRON PIPE ON SOUTH LINE OF LOT 352

WEST 22.00' SET IRON PIPE ON WEST LINE OF LOT 352

(ALL IRONS ARE 3/4" X 18" PIPES, WITH BRASS DISKS AND PLASTIC CAPS.)

\$4.00 REMONUMENTATION

THE SELECTED LOCATION IS ACCEPTED BY THE CONTRACTOR AND IS GENERALLY ACCEPTED BY PROFESSIONAL SURVEYORS AS THE BEST AVAILABLE EVIDENCE OF THE POSITION OF THE ORIGINAL CORNER.

Signed by Paul V. Schwimmer
Surveyor's Michigan License No. 24618

Date 12-16-97

SURVEY & REMONUMENTATION

Libert-20743

Page-2407.0

MAR 17 1998

SECTION



N.E. CORNER SECTION 32 T1S, R9E

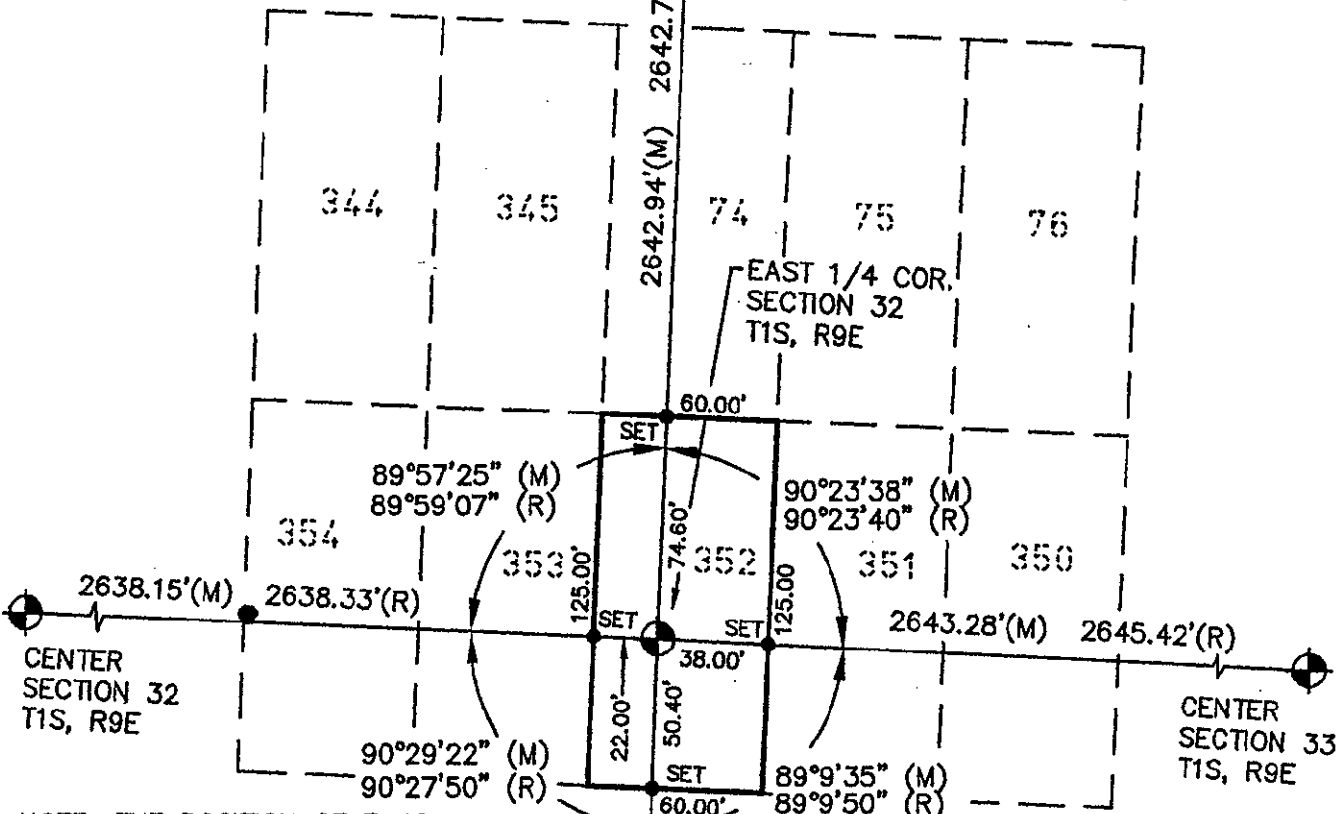
C/L W. CHICAGO ROAD

C/L HATHAWAY AVENUE

S.E. CORNER SECTION 32 T1S, R9E

WITNESSESS TO ACCESSORY ON SOUTH LINE OF LOT
 N 10° W 36.59 S.W. CORNER OF HOUSE
 N 30° E 47.70 S.E. CORNER OF HOUSE

WITNESSESS TO ACCESSORY ON EAST LINE OF LOT
 S 20° W 15.78 S.E. CORNER OF HOUSE
 N 20° W 12.30 N.E. CORNER OF HOUSE



NOTE: THE POSITION OF E-12 IN OCCUPIED BY A BRICK HOUSE. 1 SET 3/4" X 18" IRON PIPES WITH REMON. DISKS AND PLASTIC CAPS ON ALL INTERSECTIONS OF THE SECTION LINES AND LOT LINES.

WITNESSESS TO ACCESSORY ON WEST LINE OF LOT
 S 35° E 19.18 S.W. CORNER OF HOUSE
 N 30° E 20.44 N.W. CORNER OF HOUSE

WITNESSESS TO ACCESSORY ON NORTH LINE OF LOT
 S 70° W 21.15 N.W. CORNER OF GARAGE
 S 20° E 70.74 N.E. CORNER OF HOUSE

WAYNE COUNTY REMONUMENTATION PROGRAM

SKETCH OF
E-12

LIVONIA TOWNSHIP, WAYNE CO.
 STATE OF MICHIGAN

Arbor Land Consultants

Registered Land Surveyor

2936 Madrono
 Ann Arbor, Mi 48103
 Tel 1-313-669-2960
 Fax 1-313-669-2961

SCALE 1 INCH = 60 FEET

JOB No. 03697
 SHEET 1 OF 1

DATE -
 REVISION: -