

SURVEY & REMONUMENTATION

APR 05 1996

LAND CORNER RECORDATION CERTIFICATE
 Filing Requirement of Act 74, Mich. P.A. 1970

For corners in **COMMISSION**
 Wayne
 (County)

Located In: Detroit Corner Code #

1. Public Land Survey	T	1S.	R	10E.	J-7
	T		R		
	T		R		
	T		R		
2. Property Controlling in Section	S		T		R
	S		T		R
3. Miscellaneous Property in Sec.	S		T		R
	S		T		R

LIBER 28471 PAGE 672

Compliance with ACT 345, P.A. 1990

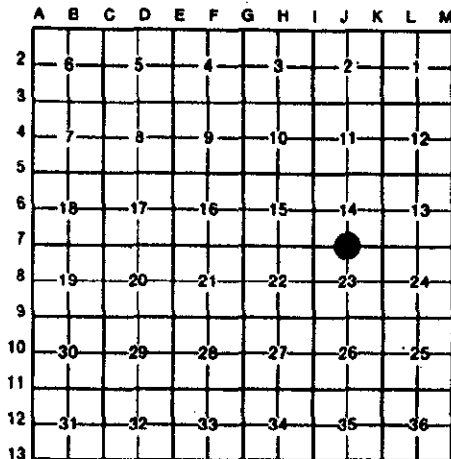
APPROVED ON: 12-12-95
 WAYNE COUNTY REMONUMENTATION PEER GROUP COMMITTEE

Register of Deeds Stamp & File Number

4. Lot No. _____, Recorded Plat _____
 5. Private Claims _____

I, William Roskelly, in a field survey on October 22, 1995, do hereby certify that under requirements of P.A. 74, Michigan P.A. of 1970, the corner points mentioned in lines 1 and 2 above were in conformance with regulations and rules therefore as required in the current manual of survey instructions of the United States Department of the Interior, Bureau of Land Management or by a decree of a Court of Law and/or that the corner points mentioned in lines 3, 4 and 5 above were in conformance with the rules of the Michigan Board of Land Surveyors or by a Decree of a Court of Law; established, re-established, monumented, re-monumented, recovered, found as expressed below:

NOTE: Not more than 4 corners, all in the same town and range, may be recorded on this certificate.



A. Description of original monument and accessories and/or subsequent restoration:

J-7 South corner section 14, T.1 S., R.10 E., Redford Township
 G.L.O. (1830's) Joseph Fletcher set corner post witnesses: B. Ash 10 S25 E18 (gone), Do ~~16 N66 E~~
 W.P.A. (1930's) No witnesses found.
 No R.C.'s or C.S.'s found on file at Wayne County Register of Deeds.

REMONUMENTATION

\$ 7.00 DEED

19 DEC 95 11:54 A.M.

RECEI

A

RECORDED

FOREST E. YOUNGBLOOD, REGISTER
 WAYNE COUNTY, MI

EDS

95271388

B. Description of corner evidence found and/or method applied in restoring or reestablishing corner:

J-7 South corner section 14, T.1 S., R.10 E., Redford Township
 Found a steel bar in concrete in a monument box at the intersection of Fenkell Avenue and Artesian Road (asphalt).
 Verified the position of the corner by comparing City of Detroit data to field measurements:
 J-7 to monument Outer Drive Record = 1321.30 Measured = 1321.19
 Monument Outer Drive to I-7 Record = 1321.80 Measured = 1321.79
 J-7 to K-7 Record = 2568.33 Measured = 2567.56
 Angle J-7 and I-7 to J-7 and K-7 Record = 180° 26' 30" Measured = 180° 26' 19"
 Angle Outer Drive and J-7 to Outer Drive and I-7 Record = 179° 55' 00" Measured = 179° 53' 56"



C. Description of monument for corner and accessories established to perpetuate locating the position of the corner:

J-7 South corner section 14, T.1 S., R.10 E., Redford Township
 Found a steel bar in concrete in a monument box at the intersection of Fenkell Avenue and Artesian Road (asphalt).
 The selected location is accepted by the contractor and is general accepted by professional surveyors as the best available evidence of the position of the corner.

WITNESSES:
 Set nail and WCR tag N.W. face P. pole N. 59° E. distance = 52.30
 Set nail and WCR tag East face P. pole S. 32° E. distance = 41.15
 Set nail and WCR tag S.E. face 42" Silver Maple S. 42° W. distance = 57.52
 Set nail and WCR tag S.W. face P. pole N. 40° W. distance = 36.62
 Placed Wayne County Remonumentation brass marker and cap #10705

Signed by William Roskelly
 Surveyor's Michigan License No. 10705

Date 12-14-95

42
 70
 J.