

FEB 28 2000

LAND CORNER RECORDATION CERTIFICATE
Filing Requirement of Act 74, Mich. P.A.1970

SECTION

FILE DO NOT MAIL

For corners in

WAYNE (County)

Located In: CANTON

Corner Code # D-3

Liber-30821 Page-44
099588854 12/22/1999
F.E. Youngblood, Wayne Co. Register of Deeds
RDANDSYL

Compliance with
ACT 345, P.A. 1990

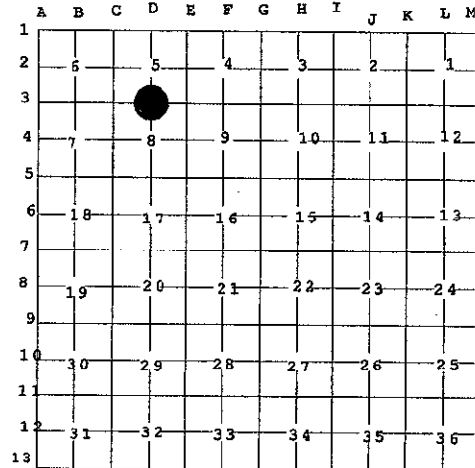
APPROVED ON: 12-16-99
WAYNE COUNTY REMONUMENTATION
PEER GROUP COMMITTEE

Register of Deeds Stamp & File
Number

- 1. Public Land Survey T 2S R 8E CANTON TWP(07)
- T R
- T R
- T R
- 2. Property Controlling S T R
- in Section S T R
- 3. Miscellaneous S T R
- Property in Sec. S T R

4. Lot No. , Recorded Plat

5. Private Claims



I, PETER P. PALCZYNSKI, P.S. in a field survey on 1 DEC, 19 99 do hereby state that under requirements of P.A. 74, Michigan P.A. of 1970, the corner points mentioned in lines 1 and 2 above were in conformance with regulations and rules therefore as required in the current manual of survey instructions of the United States Department of the Interior, Bureau of Land Management or by a decree of a Court of Law and /or that the corner points mentioned in lines 3, 4 and 5 above were in conformance with the rules of the Michigan Board of Land Surveyors or by a Decree of a Court of Law; established, re-established, monumented, recovered, found as expressed below:

NOTE: Not more than 2 corners, all in the same town and range, may be recorded on this certificate.

A. Description of original monument and accessories and/or subsequent restoration: D-3
1816 GLO: SET POST IRON'D 5" N26E 5 LKS.
JOSEPH FLETCHER BEECH 12" S21E 17 LKS
SEE BACK OF THIS SHEET (NEXT PAGE)
FOR CONTINUATION OF SECTION "A"

B. Description of corner evidence found and/or method applied in restoring or reestablishing corner: D-3
FD 1" IRON PIPE IN MON BOX @ CENTERLINE WARREN RD. (30' WD ASP PVT), 1/2 MI W OF BECK RD. REPLACED PIPE WITH 1/2" STEEL BAR IN CONCRETE MONUMENT WITH WCR ALUMINUM CAP STAMPED "PPP-PS 30096" ON 1/2" STEEL BAR IN CONC MON / MON BOX.
CORNER POSITION VERIFIED USING COMPARISONS TO RECORD INFORMATION FROM SECTION "A".

MEASURED:

- D-3 / D-2 = 2659.23 (2659.26 PLAT / NO WPA)
- D-3 / E-3 = 2684.99 (2684.85 & .80 PLATS / 2685.04 WPA)
- D-3 / D-4 = 2636.27 (2636.91 PLAT / NO WPA)
- D-3 / C-3 = 2679.97 (2679.91 PLAT / 2679.47 WPA)
- D-2 / D-3 / E-3 = 88 13' 26" (88 13' 25" PLAT)
- E-3 / D-3 / D-4 = 90 08' 52" (90 09' 30" PLAT)
- D-4 / D-3 / C-3 = 90 01' 00"
- C-3 / D-3 / D-2 = 91 36' 41" (91 36' 55" PLAT)
- E-3 / D-3 / C-3 = 180 09' 52" (180 09' 30" WPA)
- C-3 / D-3 / D-2 = 179 50' 08" (179 50' 30" WPA)

C. Description of monument for corner and accessories established to perpetuate locating the position of the corner: D-3
FD 1" IRON PIPE IN MON BOX @ CENTERLINE WARREN RD. (30' WD ASP PVT), 1/2 MI W OF BECK RD. REPLACED IRON PIPE WITH 1/2" STEEL BAR IN CONCRETE MONUMENT WITH WCR ALUMINUM CAP STAMPED "PPP-PS 30096" ON 1/2" STEEL BAR IN CONC MON / MON BOX.

- FD PK NAIL IN SOUTH FACE OF UTILITY POLE N65E 125.63'
- FD PK NAIL IN NORTHEAST FACE OF UTILITY POLE S42E 52.98'
- FD CONCRETE MONUMENT SOUTH 60.01'
- CENTERLINE OF FIRE HYDRANT STEM S80W 224.74'
- FD PK NAIL IN EAST FACE OF UTILITY POLE N10W 55.15'

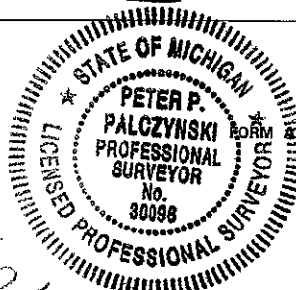
SELECTED LOCATION IS ACCEPTED BY THE CONTRACTOR AND IS GENERALLY ACCEPTED BY PROFESSIONAL SURVEYORS AS THE BEST AVAILABLE EVIDENCE OF THE POSITION OF THE ORIGINAL CORNER.

Signed by [Signature]

Date 1 DEC 99

Surveyor's Michigan License No. 30096

2S8ED-3.DOC



APPROVED BY MICHIGAN STATE BOARD OF PROFESSIONAL SURVEYORS, JAN. 28, 1971
REVISED MAY 14, 1975
REVISED JAN., 1983
REVISED OCT., 1995

R LCR 12 4R 2 Pgs A.

(NOTE: SHOULD HAVE 30096) [Signature] 47.5

1999 WAYNE COUNTY REMONUMENTATION PROGRAM

Continuation of Section "A"

History compiled by:
Peter P. Palczynski, P.S. # 30096
AMBIT LAND SURVEYORS, INC.

CANTON TOWNSHIP TOWN 2 SOUTH, RANGE 8 EAST
D-3 (SECTION CORNER 5 & 8)

DATE	COMPANY SURVEYOR JOB #	P.S. #	P.A. 74 L.C.R.C.	LOCATION OF SURVEY	MONUMENT DESCRIPTION	WITNESSES	BEARING & DISTANCE	ID #	COMMENT
1816	G.L.O JOSEPH FLETCHER				SET POST	IRON'D 5" BEECH 12" TEL POLE	N26E 5 LKS S21E 17LKS		NOTES = 40.00 CHAINS
1930'S	W.P.A.				IRON (N-8 #36)	WOOD GATE POST STEEL GATE POST ED POLE	NE 62.00' SE 19.99' SW 24.54' NW 48.57'	1 2 3 4	GONE GONE GONE GONE
1970	WCRC SECTION CORNER WITNESS RECORD			N 1/4 CORNER SEC 8 T2S R8E	IRON	IRON DE POLE STEEL FENCE POST DE POLE	N 33.00' SE 46.37' SW 36.11' NW 48.47'	5 6 7 4	W.P.A. RECORD: D-3 / E-3 = 2685.04' D-3 / C-3 = 2679.47' E-3 / D-3 / C-3 = 180 09' 30" C-3 / D-3 / D-2 = 179 50' 30"
1992	MICHAEL PRIEST RLS #22733		RC 1027 L25553 P372	D-3 T2S R8E	FOUND 2" IRON PIPE	SET PK NAIL 6" ELM PK NAIL UT POLE PK NAIL UT POLE PK NAIL UT POLE	S75E 67.21' S45E 46.40' N65W 47.00' N05W 22.59'	8 9 10 11	GONE GONE GONE GONE
1992	MICHAEL PRIEST RLS #22733		BUCKINGHAM PLACE SUB. L105 P.41-47	SE & SW 1/4 SECTION 5 T2S R8E	NOT STATED	N/A	N/A		D-3 / E-3 = 2684.85' D-3 / D-2 = 2659.26' D-3 / C-3 = 2679.91' D-2 / D-3 / E-3 = 88 13' 25" C-3 / D-3 / D-2 = 91 36' 41"
1992	DONALD BEAUPIED RLS #11512		ROYAL POINTE SUB. L.105 P.81-87	NE 1/4 SECTION 8 T2S R8E	NOT STATED	N/A	N/A		D-3 / D-4 = 2636.91' D-3 / E-3 = 2684.80' E-3 / D-3 / D-4 = 90 09' 30"

SECTION
FEB 28 2000
MURPHY &

Year	Name	Parcel #	Section	Monument	Marker	Distance	Direction	Notes
1992	DONALD BEAUPIED	#11512	E-2 T2S R8E	MONUMENT IN HANDHOLE	PK/CAP IN POLE NAIL/CAP 24" MAPLE	46.17'	NE	6 GONE
					PK/CAP MBT POLE	30.23'	E	10 GONE
					PK/CAP MBT POLE	58.29'	SW	11 GONE
					PK/CAP MBT POLE	73.81'	NW	7 GONE
1993	I JOHN JEKABSON RLS	#19836	W 1/4 CORNER SEC 4 T2S R8E	CONC MON IN MON BOX	NAIL MBT POLE	69.85'	N25W	8 GONE
					PK MBT POLE	46.20'	N45E	6 GONE
					NAIL MBT POLE	97.40'	S20E	12 GONE
					NAIL MBT POLE	58.28'	S35W	11 GONE
1994	MICHAEL PRIEST LLS	#22733	SE 1/4 SECTION 5 T2S R8E	NOT STATED	N/A		N/A	E-2 / D-2 = 2670.57'
1994	JOSEPH KAPELCZAK RLS	#24598	S 1/2 SECTION 4 T2S R8E	NOT STATED	N/A		N/A	E-2 / E-3 = 2663.61'

RFI
 SURVEY &
 FEB 28 2000
 SECTION