

FEB 28 2000

LAND CORNER RECORDATION CERTIFICATE
Filing Requirement of Act 74, Mich. P.A.1970

SECTION

FILE DO NOT MAIL

For corners in

WAYNE (County)

Located in: CANTON

Corner Code # E-3

Liber-30821 Page-48
99588876 12/22/1999
F.E. Youngblood, Wayne Co. Register of Deeds
RDANDSYL

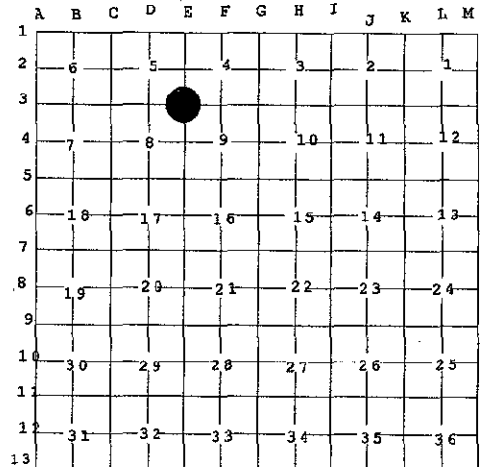
- 1. Public Land Survey T 2S R 8E CANTON TWP(07)
T R
T R
T R
- 2. Property Controlling S T R
in Section S T R
- 3. Miscellaneous S T R
Property in Sec. S T R

Compliance with
ACT 345, P.A. 1990
APPROVED ON: 12-10-99
WAYNE COUNTY REMONUMENTATION
PEER GROUP COMMITTEE
Register of Deeds Stamp & File
Number

4. Lot No. _____, Recorded Plat _____

5. Private Claims _____

I, PETER P. PALCZYNSKI, P.S. in a field survey on 1 DEC 1999 do hereby state that under requirements of P.A. 74, Michigan P.A. of 1970, the corner points mentioned in lines 1 and 2 above were in conformance with regulations and rules therefore as required in the current manual of survey instructions of the United States Department of the Interior, Bureau of Land Management or by a decree of a Court of Law and/or that the corner points mentioned in lines 3, 4 and 5 above were in conformance with the rules of the Michigan Board of Land Surveyors or by a Decree of a Court of Law; established, re-established, monumented, recovered, found as expressed below:



NOTE: Not more than 2 corners, all in the same town and range, may be recorded on this certificate.

A. Description of original monument and accessories and/or subsequent restoration: E-3
1816 GLO: SET POST BEECH 6" N66W 10 LKS.
JOSEPH FLETCHER DO 10" N23E 21 LKS
SEE BACK OF THIS SHEET (NEXT PAGE)
FOR CONTINUATION OF SECTION "A"

B. Description of corner evidence found and/or method applied in restoring or reestablishing corner: E-3
FOUND 1/2" STEEL BAR IN CONCRETE MONUMENT / MON BOX @ CENTERLINE INTERSECTION OF BECK & WARREN RDS. (30' WD ASP PVT). PLACED ALUMINUM WCR CAP STAMPED "PPP-PS 30096" ON 1/2" STEEL BAR IN CONC MON / MON BOX. CORNER POSITION VERIFIED USING COMPARISONS TO RECORD INFORMATION FROM SECTION "A".

MEASURED:
E-3 / E-2 = 2654.73 (2654.43 & .50 WPA / 2654.73 PLAT) E-2 / E-3 / F-3 = 88 19' 56" (88 20' 10" WPA)
E-3 / F-3 = 2611.04 (2610.82 & 2609.31 WPA / 2611.15 PLAT) F-3 / E-3 / E-4 = 90 17" 22" (90 16' 50" WPA)
E-3 / E-4 = 2646.88 (2646.63 WPA / 2670.57 PLAT) E-4 / E-3 / D-3 = 89 54' 39" (89 54' 30" WPA)
E-3 / D-3 = 2684.99 (2685.04 WPA / 2684.86 PLAT) D-3 / E-3 / E-2 = 91 28' 03" (91 28' 10" WPA)

Description of monument for corner and accessories established to perpetuate locating the position of the corner: E-3
FOUND 1/2" STEEL BAR IN CONCRETE MONUMENT / MON BOX @ CENTERLINE INTERSECTION OF BECK & WARREN RDS. (30' WD ASP PVT). PLACED ALUMINUM WCR CAP STAMPED "PPP-PS 30096" ON 1/2" STEEL BAR IN CONC MON / MON BOX.
SET PK NAIL/AMBIT TAG IN SE FACE UTILITY POLE(12)(R=75.80') N44E 75.61'
FD PK NAIL/WCRC REF PT TAG IN NE FACE UTILITY POLE(9)(R=61.14') S58E 61.11'
FD STEEL ENCASED CONCRETE MONUMENT(3)(R=84.98') S45W 84.77'
FD PK NAIL/WCRC REF PT TAG IN NW FACE UTILITY POLE(14)(R=100.14') S64W 100.58'
FOUND STEEL BAR "PPP-30096" N45W 83.78'
FD PK NAIL IN EAST FACE OF UTILITY POLE(11)(R=60.38') N27W 60.27'

SELECTED LOCATION IS ACCEPTED BY THE CONTRACTOR AND IS GENERALLY ACCEPTED BY PROFESSIONAL SURVEYORS AS THE BEST AVAILABLE EVIDENCE OF THE POSITION OF THE ORIGINAL CORNER.

Signed by [Signature]

Date 1 DEC 99

Surveyor's Michigan License No. 30096

2S8EE-3.DOC



FORM APPROVED BY MICHIGAN STATE BOARD OF PROFESSIONAL SURVEYORS, JAN. 28, 1971
REVISED MAY 14, 1975
REVISED JAN., 1983
REVISED OCT., 1995

R LCR 15 4R 3pg A. [Signature]

1999 WAYNE COUNTY REMONUMENTATION PROGRAM

Continuation of Section "A"

History compiled by:
Peter P. Palczynski, P.S. # 30096
AMBIT LAND SURVEYORS, INC.

CANTON TOWNSHIP TOWN 2 SOUTH, RANGE 8 EAST
E-3 (SECTION CORNER 4, 5, 8 & 9)

DATE	COMPANY SURVEYOR JOB #	P.A. 74 L.C.R.C.	LOCATION OF SURVEY	MONUMENT DESCRIPTION	WITNESSES	BEARING & DISTANCE	ID #	COMMENT
1816	G.L.O JOSEPH FLETCHER			SET POST	BEECH 6"	N66W 10 LKS		NOTES = 80.00 CHAINS
1930'S	W.P.A.			IRON (NW-9 #35)	DO 10" 14" MAPLE TEL POLE MON X CUT IN END HD WALL ED POLE	N23E 21LKS NE 46.25' SE 62.54' SW 84.98' SW 44.92' NW 44.96' NW 40.69'	1 2 3 4 5 6	GONE GONE M=84.77 GONE GONE GONE
1941	SIDNEY DAVIS STRONG RLS		NE 1/4 SECTION 8 T2S R8E	NOT STATED	N/A	N/A	N/A	W.P.A. RECORD: E-3 / E-2 = 2654.43' / 2654.50' E-3 / F-3 = 2610.82' / 2609.31' E-3 / E-4 = 2646.63' E-3 / D-3 = 2685.04' / 2684.86' E-2 / E-3 / F-3 = 88 20' 10" F-3 / E-3 / E-4 = 90 16' 50" E-4 / E-3 / D-3 = 89 54' 30" D-3 / E-3 / E-2 = 91 28' 10" E-4 / E-3 / D-3 = 89 53' 00"
1975	WCRC SECTION CORNER WITNESS RECORD		NW CORNER SECTION 9 T2S R8E	IRON	MBT POLE X CUT IN END HD WALL	SE 59.51' SW 44.90' NW 44.96' NW 40.54' NE 75.70' SE 61.14' SW 95.97'	7 4 5 6 8 9 10	GONE GONE GONE GONE GONE M = 61.11' GONE
1990	WCRC SECTION CORNER WITNESS RECORD		SW CORNER SEC 4 T2S R8E	1" PIPE	DE POLE PK NAIL SE FC POLE PK NAIL NE FC MBT POLE PK NAIL NE FC MBT POLE	NW 60.38' NE 75.80' SE 61.07'	11 12 9	M = 60.27' M = 75.61' M = 61.11'
1991	WCRC SECTION CORNER WITNESS RECORD		NW CORNER SEC 9 T2S R8E	1/2" IRON IN 4" CONC MON / MON BOX	PK / WCRC TAG E FC MBT POLE BRASS TAG SE FC DE POLE BRASS TAG NE FC POLE BRASS TAG SE COR GRDRAIL BRASS TAG N FC GUY POLE BRASS TAG SW FC DE POLE	NW 60.38' NE 75.80' SE 61.07' SW 65.03' SW 100.57' NW 60.48'	11 12 9 13 14 11	M = 60.27' M = 75.61' M = 61.11' GONE M = 100.58' M = 60.27'
1992	MICHAEL PRIEST LLS #22733	CS 2001 L25618 P550	SW 1/4 SECTION 4 T2S R8E	CONCRETE MONUMENT	NOT STATED	N/A	N/A	N/A

SECTION
FEB 28 2000
SURVEY &
RECORDED

Liber - 300961
D 11 11 43

FILE DO NOT MAIL

E-3 / E-2 = 2654.73'
E-3 / F-3 = 2611.15'
E-2 / E-3 / F-3 = 88 19' 49"
E-3 / D-3 = 2684.86'

N/A

N/A

N/A

NOT STATED

SW 1/4 SECTION 4
T2S R8E

LYNDON
VILLAGE SUB#1
L105 P67-68
HERITAGE
FARMS SUB
L105 P69-71

#22733

MICHAEL PRIEST LLS

1992

N/A

N/A

N/A

NOT STATED

SE 1/4 SECTION 5
T2S R8E

HERITAGE
FARMS SUB
L105 P69-71

#10705

WILLIAM L ROSKELLY,
RLS

1992

CTN-E-3.DOC

RF
SHIRLEY &
N

FEB 28 2000

SECTION