

FILE DO NOT MAIL

WAYNE COUNTY REGISTER OF DEEDS

FEB 28 2000

LAND CORNER RECORDATION CERTIFICATE
Filing Requirement of Act 74, Mich. P.A.1970

SECTION

For corners in

WAYNE (County)

Located in: CANTON

Corner Code # E-4

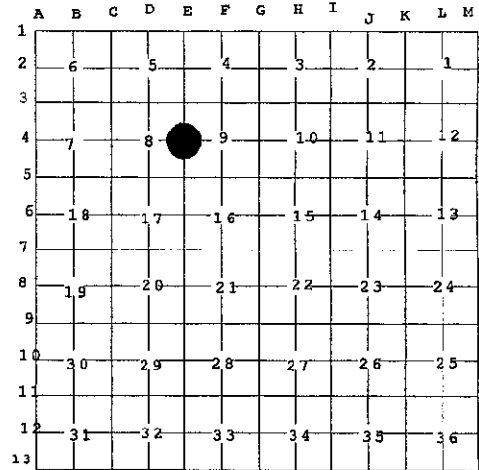
Liber-30821 Page-51
99588881 12/22/1999
F.E. Youngblood, Wayne Co. Register of Deeds

- 1. Public Land Survey T 2S R 8E CANTON TWP(07)
2. Property Controlling in Section S T R
3. Miscellaneous Property in Sec. S T R

Compliance with ACT 345, P.A. 1990
APPROVED ON: 12-10-99
WAYNE COUNTY REMONUMENTATION PEER GROUP COMMITTEE
Register of Deeds Stamp & File Number

- 4. Lot No.
5. Private Claims

I, PETER P. PALCZYNSKI, P.S. in a field survey on 1 DEC, 19 99 do hereby state that under requirements of P.A. 74, Michigan P.A. of 1970, the corner points mentioned in lines 1 and 2 above were in conformance with regulations and rules therefore as required in the current manual of survey instructions of the United States Department of the Interior, Bureau of Land Management or by a decree of a Court of Law and /or that the corner points mentioned in lines 3, 4 and 5 above were in conformance with the rules of the Michigan Board of Land Surveyors or by a Decree of a Court of Law; established, re-established, monumented, recovered, found as expressed below:



NOTE: Not more than 2 corners, all in the same town and range, may be recorded on this certificate.

A. Description of original monument and accessories and/or subsequent restoration: E-4
1816 GLO: SET POST SUG 46" S55W 8 LKS.
JOSEPH FLETCHER ASH 7" N65E 14 LKS
SEE BACK OF THIS SHEET (NEXT PAGE)
FOR CONTINUATION OF SECTION "A"

B. Description of corner evidence found and/or method applied in restoring or reestablishing corner: E-4
FOUND 1/2" STEEL BAR IN CONCRETE MONUMENT / MON BOX @ CENTERLINE INTERSECTION OF BECK & HANFORD RDS. (30' WD ASP PVT). PLACED PLASTIC CAP "PPP-PS 30096" / WCR BRASS WASHER ON 1/2" STEEL BAR IN CONC MON / MON BOX. CORNER POSITION VERIFIED USING COMPARISONS TO RECORD INFORMATION FROM SECTION "A".

MEASURED:
E-4 / E-3 = 2646.88 (2646.63 WPA / 2646.41 PLAT)
E-4 / E-5 = 2641.62 (2641.59 WPA / 2641.54 PLAT)
E-4 / D-4 = 2687.69 (2687.51 WPA)
E-5 / E-4 / D-4 = 89 45' 14" (89 45' 00" WPA / 89 44' 30" PLAT)
D-4 / E-4 / E-3 = 89 51' 47" (89 53' 40" WPA / 89 53' 40" PLAT)
E-3 / E-4 / E-5 = 180 23' 00" (180 21' 10" WPA)

Description of monument for corner and accessories established to perpetuate locating the position of the corner: E-4
FOUND 1/2" STEEL BAR IN CONCRETE MONUMENT / MON BOX @ CENTERLINE INTERSECTION OF BECK & HANFORD RDS. (30' WD ASP PVT). PLACED PLASTIC CAP "PPP-PS 30096" / WCR BRASS WASHER ON 1/2" STEEL BAR IN CONC MON / MON BOX.
SET PK NAIL/WCR TAG IN NW FACE 13" ELM N20E 44.17'
FD PK NAIL IN NW FACE OF 24" ELM N45E 86.84'
FD STEEL BAR(10)(R=72.81') N45E 72.70'
FD CONCRETE MONUMENT S45E 74.52'
CENTERLINE OF FIRE HYDRANT STEM(11)(R=73.00) S40E 73.02'
FD PK NAIL IN SE FACE OF 18" MAPLE S50W 98.02'
SET NAIL/WCR TAG IN NE FACE OF UTILITY POLE N45W 58.25'

SELECTED LOCATION IS ACCEPTED BY THE CONTRACTOR AND IS GENERALLY ACCEPTED BY PROFESSIONAL SURVEYORS AS THE BEST AVAILABLE EVIDENCE OF THE POSITION OF THE ORIGINAL CORNER.

Signed by [Signature]

Date 1 DEC 99

Surveyor's Michigan License No. 30096

2S8EE-4.DOC



MICHIGAN STATE BOARD OF PROFESSIONAL SURVEYORS, JAN. 28, 1971
REVISED MAY 14, 1975
REVISED JAN., 1983
REVISED OCT., 1995

R LCR 15 48 3pgs A [Signature]

Continuation of Section "A"

**1999 WAYNE COUNTY REMONUMENTATION PROGRAM**

CANTON TOWNSHIP TOWN 2 SOUTH, RANGE 8 EAST  
E-4 (SECTION CORNER 8 & 9)

History compiled by:  
Peter P. Palczynski, P.S. # 30096  
AMBIT LAND SURVEYORS, INC.

DATE	COMPANY SURVEYOR JOB #	P.S. #	P.A. 74 L.C.R.C.	LOCATION OF SURVEY	MONUMENT DESCRIPTION	WITNESSES	BEARING & DISTANCE	ID #	COMMENT
1816	G.L.O JOSEPH FLETCHER				SET POST	BEECH 6" DO 10"	N66W 10 LKS N23E 21LKS		NOTES = 80.00 CHAINS
1930'S	W.P.A.				IRON (NW-9 #85)	14" MAPLE TEL POLE MON X CUT IN END HD WALL	NE 46.25' SE 62.54' SW 84.98' SW 44.92' NW 44.96' NW 40.69'	1 2 3 4 5 6	GONE GONE M=84.77' GONE GONE GONE W.P.A. RECORD: E-3 / E-2 = 2654.43' / 2654.50' E-3 / F-3 = 2610.82' / 2609.31' E-3 / E-4 = 2646.63' E-3 / D-3 = 2685.04' / 2684.86' E-2 / E-3 / F-3 = 88 20' 10" F-3 / E-3 / E-4 = 90 16' 50" E-4 / E-3 / D-3 = 89 54' 30" D-3 / E-3 / E-2 = 91 28' 10" E-4 / E-3 / D-3 = 89 53' 00"
1941	SIDNEY DAVIS STRONG RLS			NE 1/4 SECTION 8 T2S R8E	NOT STATED	N/A	N/A	N/A	
1975	WCRC SECTION CORNER WITNESS RECORD			NW CORNER SECTION 9 T2S R8E	IRON	MBT POLE X CUT IN END HD WALL	SE 59.51' SW 44.90' NW 44.96' NW 40.54'	7 4 5 6	GONE GONE GONE GONE
1990	WCRC SECTION CORNER WITNESS RECORD			SW CORNER SEC 4 T2S R8E	1" PIPE	DE POLE PK NAIL SE FC POLE PK NAIL NE FC MBT POLE PK NAIL NE FC MBT POLE PK / WCRC TAG E FC MBT POLE	NE 75.70' SE 61.14' SW 95.97' NW 60.38'	8 9 10 11	GONE M = 61.11 GONE M = 60.27'
1991	WCRC SECTION CORNER WITNESS RECORD			NW CORNER SEC 9 T2S R8E	1/2" IRON IN 4" CONC MON / MON BOX	BRASS TAG SE FC DE POLE BRASS TAG NE FC POLE BRASS TAG SE COR GRDRAIL BRASS TAG N FC GUY POLE BRASS TAG SW FC DE POLE	NE 75.80' SE 61.07' SW 65.03' SW 100.57' NW 60.48'	12 9 13 14 11	M = 75.61' M = 61.11' GONE M = 100.58' M = 60.27'
1992	MICHAEL PRIEST LLS	#22733	CS 2001 L25618 P550	SW 1/4 SECTION 4 T2S R8E	CONCRETE MONUMENT	NOT STATED	N/A	N/A	N/A

SURVEY &  
SECTION  
FEB 28 2000

Library-300961  
P a g e 1 o f 2

1992	MICHAEL PRIEST LLS	#22733	LYNDON VILLAGE SUB#1 L105 P67-68	SW 1/4 SECTION 4 T2S R8E	NOT STATED	N/A	N/A	N/A	E-3 / E-2 = 2654.73' E-3 / F-3 = 2611.15' E-2 / E-3 / F-3 = 88 19' 49"
1992	WILLIAM L ROSKELLY, RLS	#10705	HERITAGE FARMS SUB L105 P69-71	SE 1/4 SECTION 5 T2S R8E	NOT STATED	N/A	N/A	N/A	E-3 / D-3 = 2684.86'

REF SURVEY & MAPPING

FEB 28 2006

SECTION