

FEB 28 1994

LAND CORNER RECORDATION CERTIFICATE
Filing Requirement of Act 74, Mich. P.A. 1970.

For corners in
WAYNE
(County)

Located In:
TWP. OF CANTON

Corner Code #

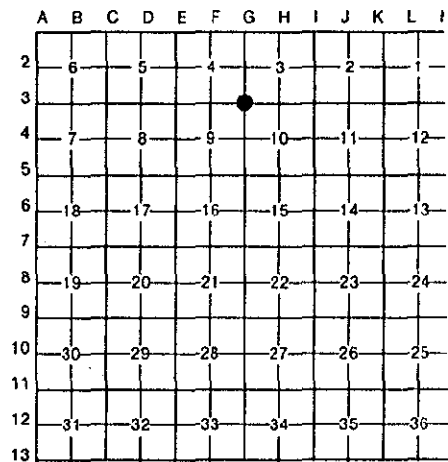
1. Public Land Survey	T	2S	R	8E	G-3
	T		R		
	T		R		
	T		R		
2. Property Controlling in Section	S		T	R	
	S		T	R	
3. Miscellaneous Property in Sec.	S		T	R	
	S		T	R	

Compliance with
ACT 345, P.A. 1990
APPROVED ON: 12-10-93
WAYNE COUNTY REMONUMENTATION
PEER GROUP COMMITTEE

Register of Deeds Stamp & File Number

RC 1283

4. Lot No. _____, Recorded Plat _____
5. Private Claims _____



I, E. PATRICK O'ROURKE, in a field survey on DECEMBER 7, 1993, do hereby certify that under requirements of P.A. 74, Michigan P.A. of 1970, the corner points mentioned in lines 1 and 2 above were in conformance with regulations and rules therefore as required in the current manual of survey instructions of the United States Department of the Interior, Bureau of Land Management or by a decree of a Court of Law and/or that the corner points mentioned in lines 3, 4 and 5 above were in conformance with the rules of the Michigan Board of Land Surveyors or by a Decree of a Court of Law; established, re-established, monumented, re-monumented, recovered, found as expressed below:

NOTE: Not more than 4 corners, all in the same town and range, may be recorded on this certificate.

A. Description of original monument and accessories and/or subsequent restoration:

- WPA 1930's - IRON - #33
- WITNESSES NE 45.19' EDISON POLE (GONE)
- SE 35.63' EDISON POLE (GONE)
- SW 46.04' CROSS ON CONC. SIGN POST (GONE)
- NW 69.37' TELEPHONE POLE (GONE)

B. Description of corner evidence found and/or method applied in restoring or reestablishing corner:

DISTANCE TO EAST 1/4 CORNER SECTION 4 MEASURED AS 2655.55'; RECORDED WPA 1930 DISTANCES 2655.17 AND 2655.81;
DISTANCE TO SOUTH 1/4 CORNER SECTION 3 MEASURED AS 2643.86'; RECORDED WPA 1930 DISTANCES 2644.13 AND 2644.28;
DISTANCE TO EAST 1/4 CORNER SECTION 9 MEASURED AS 2663.06'; RECORDED WPA 1930 DISTANCES 2662.93 AND 2662.91;
DISTANCE TO SOUTH 1/4 CORNER SECTION 4 MEASURED AS 2630.17'; RECORDED WPA 1930 DISTANCES 2630.19 AND 2630.51

- L.18750 P.10 CONC. MON. IN MON. BOX (1973)
- N 45°E 45.38' P.K. NAIL IN DE POLE (GONE)
- S 60°E 111.38' TOP BOLT C.L. HYDRANT (MEAS. 111.43)
- S 60°W 76.52' P.K. NAIL IN MBT POLE (GONE)
- N 30°W 70.56' P.K. NAIL IN MBT POLE (GONE)

(CONTINUED ON OTHER SIDE)

C. Description of monument for corner and accessories established to perpetuate locating the position of the corner:
G-3 FOUND 3/4" IRON PIPE ENCASED IN CONC. IN MON. BOX AND IT IS ACCEPTED AS A CAREFUL AND FAITHFUL PERPETUATION OF THE POSITION OF THE ORIGINAL CORNER.

- N 43°55'E 74.87' NAIL IN FLASHER ON NORTHWEST SIDE DE POLE (PREVIOUSLY USED)
- S 62°31'E 111.43' CENTERLINE TOP NUT OF HYDRANT
- S 44°52'W 72.17' NAIL IN FLASHER ON SOUTHWEST SIDE MBT POLE
- N 64°27'W 115.85' NAIL IN FLASHER ON NORTHEAST SIDE MBT POLE

PLACED REMONUMENTATION BRASS TAG & RLS CAP #16937 ON IRON

Signed by E. Patrick O'Rourke
E. PATRICK O'ROURKE
Surveyor's Michigan License No. 16937

Date DECEMBER 7, 1993



Handwritten initials and date: 2R 11/11/93

12/13/93 35696 REMO FEE 2.00
 12/13/93 35696 DEED 14.00

FILE DO NOT MAIL

SECTION B (CONTINUED)

L.18988 P.915 FOUND 5/8" IRON PIPE IN HANDHOLE (1974)

- NE 45.15 P.K. NAIL IN NORTHWEST SIDE DE POLE (GONE)
- SW 48.65 P.K. NAIL IN SOUTHEAST SIDE MBT POLE (GONE)
- NW 70.75 P.K. NAIL IN SOUTHWEST SIDE MBT POLE (GONE)

L.19528 P.784 MON. BOX WITH 5/8" IRON PIPE (1976)

- N 40°E 45.31' P.K. NAIL & WAYNE COUNTY ROAD COMMISSION FLASHER IN NORTHWEST SIDE UTILITY POLE (GONE)
- S 45°W 48.68' P.K. NAIL IN SOUTHEAST FACE OF UTILITY POLE (GONE)
- N 30°W 70.53' P.K. NAIL AND FLASHER IN NORTHEAST FACE OF UTILITY POLE (GONE)

L.19923 P.855 5/8" IRON (1977)

- N 30°E 45.13' NAIL IN POLE (GONE)
- S 20°W 48.65' NAIL IN POLE (GONE)
- N 20°W 70.75' NAIL IN POLE (GONE)

L.20027 P.886 FOUND 3/4" IRON PIPE ENCASED IN CONCRETE IN MON. BOX (1978)

- NE 45.30' SPIKE WITH BRASS TAG IN NORTHWEST SIDE MBT POLE (GONE)
- ENE 74.95' SPIKE WITH BRASS TAG IN NORTHWEST SIDE DE POLE (MEAS. 74.87)
- SE 158.25' SPIKE WITH BRASS TAG IN SOUTHWEST SIDE DE POLE (GONE)
- SW 76.54' SPIKE WITH BRASS TAG IN NORTHWEST SIDE MBT POLE (GONE)
- NW 70.68' SPIKE WITH BRASS TAG IN NORTHEAST SIDE MBT POLE (GONE)

L.20383 P.863 FOUND CONCRETE MON. IN BOX (1978)

- N 45°E 45.38' NAIL IN DE POLE (GONE)
- S 60°E 111.38' TOP BOLT HYDRANT (MEAS. 111.43')
- S 60°W 76.52' NAIL IN MBT POLE (GONE)
- N 30°W 70.56 NAIL IN MBT POLE (GONE)