

LAND CORNER RECORDATION CERTIFICATE  
Filing Requirement of Act 74, Mich. P.A. 1970

MAR 02 1999

For corners in

WAYNE  
(County)

Located In:

Corner Code #/

SECTION

- |                                    |       |       |                  |
|------------------------------------|-------|-------|------------------|
| 1. Public Land Survey              | T 2 S | R 8 E | G-5              |
|                                    | T     | R     | CANTON TWP (#07) |
|                                    | T     | R     |                  |
|                                    | T     | R     |                  |
| 2. Property Controlling in Section | S     | T     | R                |
|                                    | S     | T     | R                |
| 3. Miscellaneous Property in Sec.  | S     | T     | R                |
|                                    | S     | T     | R                |
4. Lot No. \_\_\_\_\_, Recorded Plat \_\_\_\_\_
5. Private Claims \_\_\_\_\_

Compliance with  
ACT 345, P.A. 1990

APPROVED ON: 12-10-98  
WAYNE COUNTY REMONUMENTATION  
PEER GROUP COMMITTEE

Register of Deeds Stamp & File Number

68455386LS 12/22/1998 Page 26.0 08:45AM

I, **PETER P. PALCZYNSKI** in a field survey on 1 DECEMBER, 19 98, do hereby certify that under requirements of P.A. 74, Michigan P.A. of 1970, the corner points mentioned in lines 1 and 2 above were in conformance with regulations and rules therofore as required in the current manual of survey instructions of the United States Department of the Interior, Bureau of Land Management or by a decree of a Court of Law and/or that the corner points mentioned in lines 3, 4 and 5 above were in conformance with the rules of the Michigan Board of Land Surveyors or by a Decree of a Court of Law, established, re-established, monumented, re-monumented, recovered, found as expressed below:

**NOTE:** Not more than 4 corners, all in the same town and range, may be recorded on this certificate.

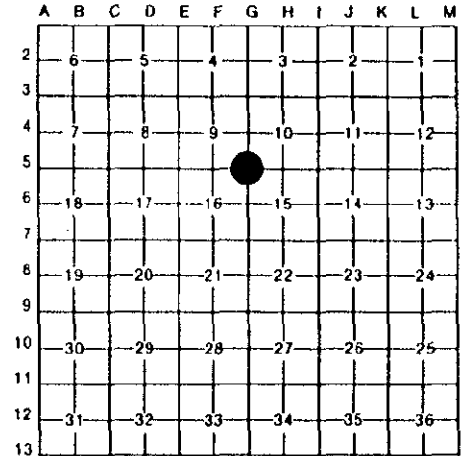
A. Description of original monument and accessories and/or subsequent restoration:

|                        |                         |
|------------------------|-------------------------|
| 1816 G.L.O. - SET POST | ELM 20" S45°E 12 LKS.   |
| JOSEPH FLETCHER        | MAPLE 11" N83°W 18 LKS. |

\$4.00 REMONUMENTATION  
\$10.00 DEED

RECORDED  
FOREST E. YOUNGLOOD, REGISTER OF DEEDS  
WAYNE COUNTY, MI  
Receipt #101465

SEE BACK OF THIS SHEET (NEXT PAGE)  
FOR CONTINUATION OF SECTION "A"



B. Description of corner evidence found and/or method applied in restoring or reestablishing corner:

FOUND 3/4" IRON PIPE IN STEEL ENCASED CONC MON / MON BOX IN CENTERLINE CANTON CENTER & FORD RDS 50' WIDE ASPHALT PAVEMENT WITH CONC CURBS. SET ALUMINUM WAYNE COUNTY REMON CAP ON 1/2" IRON IN FOUND PIPE/CONC MON STAMPED "PPP PS #30096"

MEASURED:  
G-4/G-5/H-5= 90°31'18"  
(WPA = 90° 29' 00")

CORNER POSITION VERIFIED USING COMPARISONS TO RECORD INFORMATION FROM SECTION "A".

MEASURED:  
G-5/G-4=2669.43' (2669.29' / 2669.36' WPA)  
G-5/H-5=2640.13' (2638.98' / 2638.98' WPA)



C. Description of monument for corner and accessories established to perpetuate locating the position of the corner:

|  |  |       |        |
|--|--|-------|--------|
| G-5, T2S, R8E  | CENTERLINE FIRE HYDRANT STEM                             | N23°E | 122.10 |
| FOUND 3/4" IRON PIPE IN STEEL ENCASED CONC MON / MON BOX IN CENTERLINE CANTON CENTER & FORD RDS 50' WIDE ASPHALT PAVEMENT WITH CONC CURBS. SET ALUMINUM WAYNE COUNTY REMON CAP ON 1/2" IRON IN FOUND PIPE/CONC MON STAMPED "PPP PS #30096" | SET NAIL/WCR TAG IN WEST FACE OF UTILITY POLE            | N24°E | 129.75 |
|  | CENTERLINE FIRE HYDRANT STEM(11)(R=96.15')               | S68°E | 96.13' |
|  | FD PK / WCR WASHER IN NE FACE UTILITY POLE               | S38°E | 85.51' |
|  | NE CORNER OF NEW CB RIM                                  | S14°W | 116.83 |
|  | SET NAIL/WCR TAG IN SW FACE UTILITY POLE(7)(R=85.45')    | N60°W | 85.42' |
|  | FD PK / WCR WASHER IN SW FACE UTILITY POLE(10)(R=65.34') | N32°W | 65.27' |

SELECTED LOCATION IS ACCEPTED BY THE CONTRACTOR AND IS GENERALLY ACCEPTED BY PROFESSIONAL SURVEYORS AS THE BEST AVAILABLE EVIDENCE OF THE POSITION OF THE ORIGINAL CORNER.

Signed by

Date

21 DEC 98

Surveyor's Michigan License No. 30096

2S8EG-5.DOC R LCR 10 4R 2PG U P.P.

Continuation of Section "A"

1998 WAYNE COUNTY REMONUMENTATION PROGRAM

CANTON TOWNSHIP TOWN 2 SOUTH, RANGE 8 EAST  
G-5 (SECTION CORNER 9, 10, 15 & 16)

History compiled by:  
Peter P. Palczynski, P.S. # 30096  
AMBIT LAND SURVEYORS, INC.

COMPANY  
SURVEYOR  
JOB #

P.A. 74  
L.C.R.C.

LOCATION  
OF SURVEY

MONUMENT  
DESCRIPTION

WITNESSES

BEARING  
& DISTANCE

ID #

COMMENT

1816 G.L.O.  
JOSEPH FLETCHER  
1930'S W.P.A.

ELM 20"  
MAPLE 11"  
CROSS IN BRIDGE HEADWALL  
14" WALNUT  
GAS PUMP BASE  
CROSS IN BRIDGE HEADWALL

S45°E 12 LKS  
N83°W 18 LKS  
NE 79.30'  
SE 69.99'  
SW 83.79'  
NW 79.39'

NOTES = 40.00 CHAINS  
1 GONE  
2 GONE  
3 GONE  
4 GONE

W.P.A. RECORD:  
G-5/G-4 = 2669.29' / 2669.36'  
G-5/H-5 = 2638.98' / 2638.98'  
G-4/G-5/H-5 = 90° 29' 00"

3 JUN 31

ILEGIBLE  
SUPERVISOR'S  
CANTON PLAT  
#1 L64 P85 WCR

SE 1/4 SECTION 9  
T2S R8E

NOT STATED

NOT STATED

16 FEB 70

WCR  
SECTION  
CORNER  
WITNESS  
RECORD

G-5

"X" S END CULVERT  
FIRE HYDRANT  
ED POLE  
MBT POLE

NE 79.  
SE 87.42  
SE 57.07  
NW 85.45'

1 GONE  
5 GONE  
6 GONE  
7 MEAS = 85.42'

5 JUN 74 ROBERT P. ROSKELLY  
RLS ROSKELLY &  
JEKABSON ASSOC  
4 JAN 88 PETER P. PALCZYNSKI  
P.S. AMBIT LAND  
SURVEYORS, INC.

CERTIFIED  
SURVEY

SW 1/4 SECTION 10  
T2S R8E

"X" S END CULVERT  
CORNER BRIDGE GUARD RAIL  
NAIL/TAG IN DE POLE  
NAIL IN MBT POLE

NW 79.  
NE 76.85'  
SE 75.04'

4 GONE  
8 MEAS = 76.04'  
9 GONE

23 JAN 89 GRANT WARD

CERTIFIED  
SURVEY

SE 1/4 SECTION 9  
T2S R8E

FOUND CONC MON IN  
MON BOX

NW 65.08'  
N25°E 75.98'  
S58°E 96.15'

10 MEAS = 65.52'  
8 MEAS = 76.04'  
11 MEAS = 96.13'

RC 933

RC 933

G-5

NE COR CATCH BASIN FRAME  
NGS REF MARK #8 1976"  
SET 60D/TAG E FACE U POLE  
SET 60D/TAG E FACE U POLE  
SET 60D/TAG SW FACE U POLE  
SET 60D/TAG NW FACE U POLE

S14°W 98.10'  
N54°W 111.89  
S40°E 85.34'  
SOUTH 183.05  
N40°W 65.34'  
N50°E 74.93'

12 GONE  
13 MEAS = 111.92'  
14 MEAS = 85.70'  
15 GONE  
10 MEAS = 65.52'  
16 MEAS = 75.11'

SURVEY &  
REMONUMENTATION

MAR 02 1999

SECTION