

FEB 28 1994

LAND CORNER RECORDATION CERTIFICATE
Filing Requirement of Act 74, Mich. P.A. 1970

For corners in COMMISSION

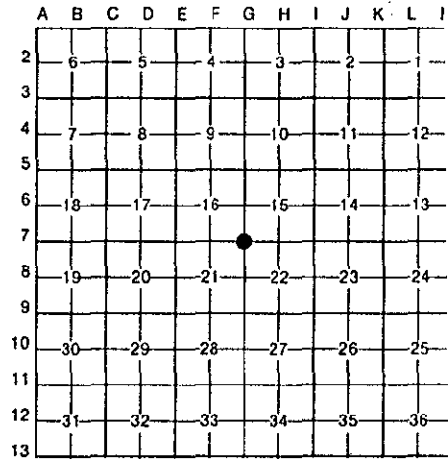
Table with columns: WAYNE (County), Located In: TWP. OF CANTON, Corner Code ##. Rows include Public Land Survey, Property Controlling in Section, and Miscellaneous Property in Sec.

Compliance with ACT 345, P.A. 1990
APPROVED ON: 12-10-93 [Signature]
WAYNE COUNTY REMONUMENTATION PEER GROUP COMMITTEE

RC 1284

Register of Deeds Stamp & File Number

4. Lot No. , Recorded Plat
5. Private Claims



I, E. PATRICK O'ROURKE, in a field survey on DECEMBER 7, 1993, do hereby certify that under requirements of P.A. 74, Michigan P.A. of 1970, the corner points mentioned in lines 1 and 2 above were in conformance with regulations and rules therefore as required in the current manual of survey instructions of the United States Department of the Interior, Bureau of Land Management or by a decree of a Court of Law and/or that the corner points mentioned in lines 3, 4 and 5 above were in conformance with the rules of the Michigan Board of Land Surveyors or by a Decree of a Court of Law; established, re-established, monumented, re-monumented, recovered, found as expressed below:

NOTE: Not more than 4 corners, all in the same town and range, may be recorded on this certificate.

A. Description of original monument and accessories and/or subsequent restoration:

G.L.O. (1800's) DESCRIPTION OF MONUMENT NOT STATED IN NOTES

WITNESSES: SUGAR 7 S42W 11 (7.26') (GONE)
DO 8 S72E 10 (6.60') (GONE)

W.P.A. (1930's) IRON (#87)

WITNESSES: NW 57.65' CROSS IN CONCRETE SIGN POST (GONE)
NE 19.35' CROSS IN SOUTHEAST CORNER CONCRETE BRIDGE RAIL (GONE)
SE 127.32' BASE CONCRETE GUARD RAIL (GONE)
SW 55.11' NAIL IN SOUTH SIDE ED POLE (GONE)



B. Description of corner evidence found and/or method applied in restoring or reestablishing corner:

DISTANCE TO G-6 MEASURED AS 2657.86'; RECORDED WPA (1930) DISTANCE OF 2657.93' AND 2657.98';
DISTANCE TO G-8 MEASURED AS 2644.93'; RECORDED WPA (1930) DISTANCE OF 2644.96' AND 2644.78';
DISTANCE TO F-7 MEASURED AS 2638.56'; RECORDED WPA (1930) DISTANCE OF 2638.21' AND 2638.21';
DISTANCE TO H-7 MEASURED AS 2634.66'; RECORDED WPA (1930) DISTANCE OF 2633.66' AND 2633.46'

L.18946 P.448 (CS) 1974 MON IN BOX

NE 87.57' NAIL IN POLE (GONE)
SE 49.11' NAIL IN POLE (GONE)
SW 48.98' NAIL IN POLE (GONE)
NW 81.43' NAIL IN POLE (GONE)

(CONTINUED ON OTHER SIDE)

C. Description of monument for corner and accessories established to perpetuate locating the position of the corner:

FOUND 1/2" IRON PIPE IN MONUMENT IN ROAD BOX AT CENTERLINE OF CANTON CENTER AND CHERRY HILL AND IT IS ACCEPTED AS A CAREFUL AND FAITHFUL PERPETUATION OF THE POSITION OF THE ORIGINAL CORNER.

WITNESSES: N 68°50'W 81.16' RR SPIKE SOUTHEAST SIDE UTILITY POLE
N 41°36'W 74.18' SOUTHEAST CORNER BRICK BUILDING 107 CANTON CENTER (PREVIOUSLY USED)
N 52°37'E 77.88' P.K. NAIL AND TAG GW TREE TAG #78941 IN NORTH SIDE 10" MAPLE
S 53°19'E 63.37' P.K. NAIL AND TAG GW TREE TAG #78942 IN NORTHEAST SIDE UTILITY POLE
S 69°06'W 85.52' P.K. NAIL AND TAG GW TREE TAG #78940 IN NORTH SIDE UTILITY POLE

PLACED A REMONUMENTATION BRASS DISC AND CAP #16937 ON 1/2" IRON PIPE IN MONUMENT G-7

Signed by [Signature]
E. PATRICK O'ROURKE
Surveyor's Michigan License No. 16937

Date DECEMBER 7, 1993

2R

12/13/93 35696 DEED 14.00
 12/13/93 35696 REMO FEE 2.00

FILE DO NOT MAIL

SECTION B (CONTINUED)

- L.20053 P.705 (CS) 1978 1/2" IRON PIPE IN MONUMENT BOX
 S 69°W 85.48' P.K. NAIL NORTH SIDE DE POLE (MEAS. 85.52')
 N 69°W 81.50' CAP NAIL NORTHEAST SIDE DE POLE (MEAS. 81.16')
 N 42°W 74.28' SOUTHEAST CORNER BUILDING (MEAS. 74.18')
 N 22°E 87.57' P.K. NAIL WEST SIDE DE POLE (GONE)
- L.25974 P.818 (RC) 1991 FOUND CONCRETE MONUMENT IN ROAD BOX CENTERLINE OF CANTON CENTER AND CHERRY HILL
 NE 41.35' CROSS IN BASE WAYNE COUNTY ROAD SIGN
 SE 35.37' EDISON POLE (GONE)
 SW 67.07' 16" MAPLE (GONE)
 NW 74.24' SOUTHEAST CORNER BUILDING (MEAS. 74.18')
- N 30°E 92.89' P.K. NAIL NORTHWEST FACE UTILITY POLE
 S 50°E 63.27' NAIL AND WASHER (WAYNE COUNTY ROAD COMMISSION REF. POINT) NORTHEAST FACE UTILITY POLE (MEAS. 63.37')
 S 70°W 85.45' P.K. NAIL NORTH FACE UTILITY POLE (MEAS. 85.45')
 N 60°W 81.41' NAIL AND WASHER (WAYNE COUNTY ROAD COMMISSION REF. POINT) NORTHEAST FACE UTILITY POLE (MEAS. 81.16')
 N 40°W 74.17' SOUTHEAST CORNER OF BUILDING #107 (MEAS. 74.18')