

DEC 22 1998  
FILE DO NOT MAIL

SURVEY & REMONUMENTATION

LAND CORNER RECORDATION CERTIFICATE

Filing Requirement of Act 74, Mich. P.A. 1970

MAR 02 1999

For corners in

WAYNE

(County)

Located In:

Corner Code -#

SECTION

1. Public Land Survey	T 2 S	R 8 E	G-9
	T	R	CANTON TWP (#07)
	T	R	
	T	R	
2. Property Controlling in Section	S	T	R
	S	T	R
3. Miscellaneous Property in Sec.	S	T	R
	S	T	R
4. Lot No. _____, Recorded Plat _____			
5. Private Claims _____			

Compliance with ACT 345, P.A. 1990

APPROVED ON: 12-10-98  
WAYNE COUNTY REMONUMENTATION PEER GROUP COMMITTEE  
Register of Deeds Stamp & File Number

48485538032 12/23/98 08:48AM

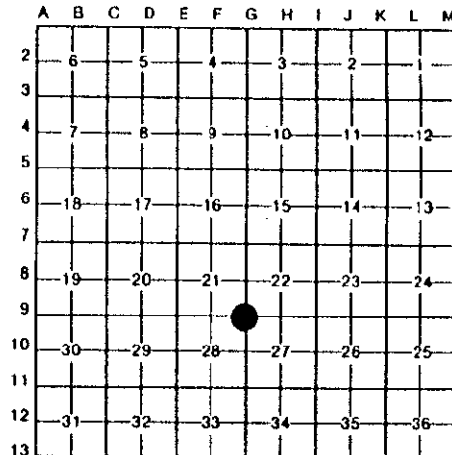
I, PETER P. PALCZYNSKI in a field survey on 1 DECEMBER 19 98 do hereby certify that under requirements of P.A. 74, Michigan P.A. of 1970, the corner points mentioned in lines 1 and 2 above were in conformance with regulations and rules therefore as required in the current manual of survey instructions of the United States Department of the Interior, Bureau of Land Management or by a decree of a Court of Law and/or that the corner points mentioned in lines 3, 4 and 5 above were in conformance with the rules of the Michigan Board of Land Surveyors or by a Decree of a Court of Law; established, re-established, monumented, re-monumented, recovered, found as expressed below:

**NOTE: Not more than 4 corners, all in the same town and range, may be recorded on this certificate.**

A. Description of original monument and accessories and/or subsequent restoration:

1816 G.L.O. - SET POST IRON'D 4" S89°W 3 LKS.  
JOSEPH FLETCHER DO 6" S66°E 14 LKS.

SEE BACK OF THIS SHEET (NEXT PAGE) FOR CONTINUATION OF SECTION "A"



\$4.00 REMONUMENTATION  
\$13.00 DEED

RECORDED  
FOREST E. YOUNGBLOOD, REGISTER OF DEEDS  
WAYNE COUNTY, MI  
Receipt #14145

B. Description of corner evidence found and/or method applied in restoring or reestablishing corner:

FOUND 1/2" IRON PIPE IN CONC MON / MON BOX IN CENTERLINE CANTON CENTER & PALMER RDS 59' WIDE ASPHALT PAVEMENT WITH CONC CURBS. SET MAG NAIL IN BRASS WAYNE COUNTY REMON WASHER IN FOUND PIPE/CONC MON STAMPED "PPP PS #30096"

MEASURED:  
G-8/G-9/H-9= 90°46'44"  
(WPA = 90° 46' 15")  
H-9/G-9/G-10 = 88°57'05"  
(WPA = 88°57'50")  
G-8/G-9/G-10= 179°43'59"  
(WPA = 179°44' 05")

CORNER POSITION VERIFIED USING COMPARISONS TO RECORD INFORMATION FROM SECTION "A".

MEASURED:  
G-9/G-8=2645.83' (2645.61 / 2645.60' WPA)  
G-9/H-9=2651.12' (2650.87' / 2650.87' WPA)  
G-9/G-10=2641.32' (2641.28' / 2640.99' WPA)



C. Description of monument for corner and accessories established to perpetuate locating the position of the corner:

G-9, T2S, R8E	SET NAIL/WCR TAG IN NW FACE OF UTILITY POLE	N44°E	72.40'
FOUND 1/2" IRON PIPE IN CONC MON / MON BOX IN CENTERLINE CANTON CENTER & PALMER RDS 59' WIDE ASPHALT PAVEMENT WITH CONC CURBS. SET MAG NAIL IN BRASS WAYNE COUNTY REMON WASHER IN FOUND PIPE/CONC MON STAMPED "PPP PS #30096"	FOUND CONCRETE MONUMENT	N45°E	84.34'
	SET NAIL/WCR TAG IN NORTH FACE UTILITY POLE (9)(R=71.30')	S50°E	70.95'
	FOUND CONCRETE MONUMENT	S45°E	85.78'
	CENTERLINE FIRE HYDRANT STEM(7)(R=74.32')	S34°W	74.17'
	SET NAIL/WCR TAG IN SOUTHEAST FACE UTILITY POLE	S46°W	72.88'
	SET NAIL/WCR TAG IN NE FACE OF UTILITY POLE	N49°W	60.52'

SELECTED LOCATION IS ACCEPTED BY THE CONTRACTOR AND IS GENERALLY ACCEPTED BY PROFESSIONAL SURVEYORS AS THE BEST AVAILABLE EVIDENCE OF THE POSITION OF THE ORIGINAL CORNER.

Signed by

*[Signature]*

Date

21 DEC 98

Surveyor's Michigan License No. 30096

2SBEG-9.DOC

R LCR 13 4R 3PG U. DOJ

1998 WAYNE COUNTY REMONUMENTATION PROGRAM

Continuation of Section "A"

History compiled by:  
Peter P. Palczynski, P.S. # 30096  
AMBIT LAND SURVEYORS, INC.

CANTON TOWNSHIP TOWN 2 SOUTH, RANGE 8 EAST  
G-9 (SECTION CORNER 21 22, 27 & 28)

DATE	COMPANY SURVEYOR JOB #	P.S. #	P.A. 74 L.C.R.C.	LOCATION OF SURVEY	MONUMENT DESCRIPTION	WITNESSES	BEARING & DISTANCE	ID #	COMMENT
1815	G.L.O. JOSEPH FLETCHER				SET POST	IRON'D 4'	S89°W 3 LKS		NOTES = 40.00 CHAINS
1930'S	W.P.A.				IRON SET (NW-27 #111)	DO 6' 24" MAPLE CROSS ON SIGN POST 14" MAPLE 24" ASH	S66°E 14 LKS NE 75.05' SE 32.35' NW 31.63' NW 48.90'	1 2 3 4	GONE GONE GONE GONE
									W.P.A. RECORD: G-9/G-8 = 2645.61' / 2645.60' G-9/H-9 = 2650.87' / 2650.87' G-9/G-10 = 2641.28' / 2640.99' G-8/G-9/H-9 = 90° 46' 15" H-9/G-9/G-10 = 88° 57' 50" G-8/G-9/G-10 = 179° 44' 05"
3 MAR 70	WCRC			G-9	MONUMENT IN BOX	DE POLE GUY POLE TOP OF HYDRANT WOOD POST	NE 50.89' SE 52.71' SW 74.32' SW 31.00'	5 6 7 8	GONE GONE MEAS = 74.17' GONE
30 OCT 72	TERENCE B. CANTRELL RLS	#5782		G-9	5/8" IRON IN HANDHOLE	DE POLE GUY POLE HYDRANT WARNING POST	N34°E 50.52' S34°E 52.69' S33°W 74.32' WEST 31.03'	5 6 7 8	GONE GONE MEAS = 74.17' GONE
18 SEP 78	TERENCE B. CANTRELL RLS	#5782		GREENBROOK NW 1/4 SECTION 27 VILLAGE SUB #1 T2S R8E	NOT STATED	NOT STATED	H-9/G-9/G-10 = 88°57'35" PLAT		MEAS: H-9/G-9/G-10 = 88° 57' 05"
5 FEB 87	WCRC			G-9	MONUMENT IN BOX	DE POLE DE POLE TOP OF HYDRANT WOOD POST NOT STATED	NE 50.88' SE 71.30' SW 74.30' SW 30.99'	5 9 7 8	GONE MEAS = 70.95' MEAS = 74.17' GONE
31 AUG 95	ROBERT C. HARR, PS WARNER CANTRELL & PADMOS INC	#39081		SW 1/4 SECTION 22 T2S R8E	NOT STATED	NOT STATED	G-8/G-9/H-9 = 90°46'55" PLAT G8/G9=2645.80 G9/HP=2651.39		MEAS: G-8/G-9/H-9 = 90° 46' 44" MEAS: G8/G9 = 2645.83' MEAS: G9/HP = 2651.12'

MAR 02 1999

SECTION

0 11-22-98 25000-100 IT

4 MAR 96

MICHAEL J. BAILEY, P.E.  
DETRICH BAILEY ASSOC

LINKS OF  
PHEASANT RUN  
SITE CONDO  
L28682 P933

SE 1/4 SECTION 21 & NE  
1/4 SECTION 28  
T2S R8E

NOT STATED

NOT STATED

CTN-G-9.DOC

SURVEY &  
REMONUMENTATION

MAR 02 1999

SECTION