

FEB 23 1994

LAND CORNER RECORDATION CERTIFICATE
Filing Requirement of Act 74, Mich. P.A. 1970

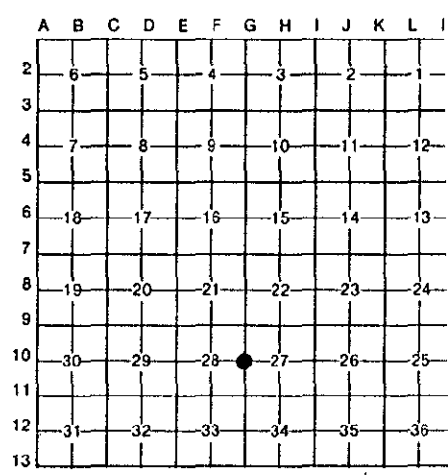
For corners in
WAYNE COMMISSION
(County)

	Located In:	Corner Code ##
	TWP. OF CANTON	
1. Public Land Survey	T 2S R 8E	6-10
	T _____ R _____	_____
	T _____ R _____	_____
	T _____ R _____	_____
2. Property Controlling in Section	S _____ T _____ R _____	_____
	S _____ T _____ R _____	_____
3. Miscellaneous Property in Sec.	S _____ T _____ R _____	_____
	S _____ T _____ R _____	_____

Compliance with
ACT 345, P.A. 1990
APPROVED ON: 12-10-93
WAYNE COUNTY REMONUMENTATION
PEER GROUP COMMITTEE

Register of Deeds Stamp & File Number

- 4. Lot No. _____, Recorded Plat _____
- 5. Private Claims _____



I, E. PATRICK O'ROURKE, in a field survey on DECEMBER 7, 19 93, do hereby certify that under requirements of P.A. 74, Michigan P.A. of 1970, the corner points mentioned in lines 1 and 2 above were in conformance with regulations and rules therefore as required in the current manual of survey instructions of the United States Department of the Interior, Bureau of Land Management or by a decree of a Court of Law and/or that the corner points mentioned in lines 3, 4 and 5 above were in conformance with the rules of the Michigan Board of Land Surveyors or by a Decree of a Court of Law; established, re-established, monumented, re-monumented, recovered, found as expressed below:

NOTE: Not more than 4 corners, all in the same town and range, may be recorded on this certificate.

A. Description of original monument and accessories and/or subsequent restoration:

- G.L.O. (1815-1816) DESCRIPTION OF MONUMENT NOT STATED IN NOTES.
- WITNESSES: ASH 6" N59E 15 (9.90) (GONE)
- DO 4" S1W 7 (4.62) (GONE)
- W.P.A. 1930's - CROSS - #124
- WITNESSES: EAST 28.02' 18" ELM (GONE)
- SE 66.58' 24" ELM (GONE)
- SW 50.70' 26" OAK (GONE)
- NW 34.20' 12" TRIPLE ELM (GONE)



B. Description of corner evidence found and/or method applied in restoring or reestablishing corner:

DISTANCE TO NE CORNER SECTION 28 MEASURED AS 2641.30'; RECORDED WPA 1930 DISTANCES 2641.28 AND 2640.99;
DISTANCE TO SE CORNER SECTION 28 MEASURED AS 2644.05'; RECORDED WPA 1930 DISTANCES 2644.01 AND 2643.86

L.18296 P.916 FOUND 1-1/4" IRON PIPE IN HANDHOLE (1972)

- N 21°10'E 76.46' 18" ELM (MEAS. 76.46)
- N 82°55'E 37.34' 18" POPLAR (GONE)
- N 82°08'W 38.31' 6" MAPLE (MEAS. 38.30)
- N 62°52'W 68.28' FENCE POST (GONE)

(CONTINUED ON OTHER SIDE)

C. Description of monument for corner and accessories established to perpetuate locating the position of the corner:

G-10 E 1/4 CORNER SECTION 28 - W 1/4 CORNER SECTION 27 T2S, R8E
FOUND 1-1/4" SOLID IRON PIPE IN MONUMENT BOX AND IT IS ACCEPTED AS CAREFUL AND FAITHFUL PERPETUATION OF THE POSITION OF THE ORIGINAL CORNER.

WITNESSES: N 20°45'E 76.12' FOUND NAIL & PLASTIC REF. CAP ON NW SIDE 18" OAK
N 85°07'E 36.61' FOUND P.K. NAIL IN PLASTIC REF. CAP ON SOUTH SIDE TWIN MAPLE
S 24°04'W 110.68' CENTER TOP NUT OF HYDRANT
S 82°52'W 38.30' NAIL IN PLASTIC CAP ON NORTH SIDE 12" MAPLE (PREVIOUSLY USED)

UNABLE TO PLACE REMONUMENTATION BRASS DISC AND CAP DUE TO SIZE OF IRON PIPE.

Signed by E. Patrick O'Rourke
Surveyor's Michigan License No. 16937

Date DECEMBER 7, 1993

2R
11117

LI 27033 PA 863

12/13/93 35696 REMO FEE 2.00
12/13/93 35696 DEED 14.00

FILE DO NOT MAIL

SECTION B (CONTINUED)

L.24765 P.441 FOUND 1" IRON PIPE IN MON. BOX (1990)

- N 30°E 76.48' FOUND NAIL IN NW FACE 18" OAK (MEAS. 76.46)
- N 80°E 36.92' FOUND P.K. NAIL IN SOUTH FACE TWIN MAPLE (MEAS. 36.61)
- S 60°E 113.85' NW CORNER OF HOUSE #2915 (MEAS. 113.83)
- S 80°W 38.29' FOUND P.K. NAIL IN NORTH FACE OF 12" MAPLE (MEAS. 38.30)