

FILE DO NOT MAIL

SURVEY & REMONUMENTATION

MAR 17 1998

LAND CORNER RECORDATION CERTIFICATE

Filing Requirement of Act 74, Mich. P.A. 1970
Liber-29739

Page 528.0
97327821LS 12/15/1997 08:44AM

For corners in

| | | |
|---------------------------------------|---|-----------------------|
| <u>WAYNE</u> (County) | Located in: TOWNSHIP OF CANTON (#07) | Corner Code # I-11 |
| 1. Public Land Survey | T <u>2S</u> R <u>8E</u> | <u>I-11</u> |
| | T _____ R _____ | _____ |
| | T _____ R _____ | _____ |
| | T _____ R _____ | _____ |
| 2. Property Controlling in Section | S _____ T _____ R _____ | _____ |
| | S _____ T _____ R _____ | _____ |
| 3. Miscellaneous Property in Sec. | S _____ T _____ R _____ | _____ |
| | S _____ T _____ R _____ | _____ |
| 4. Lot No. _____, Recorded Plat _____ | | |
| 5. Private Claims _____ | | |

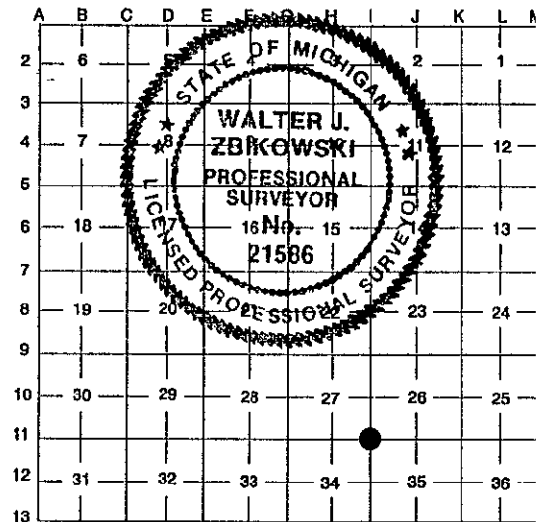
Compliance with
ACT 345, P.A. 1990

APPROVED ON: 11-13-97
WAYNE COUNTY REMONUMENTATION
PEER GROUP COMMITTEE

Register of Deeds Stamp & File Number

I, WALTER J. ZBIKOWSKI, in a field survey on OCTOBER 14, 1997, do hereby certify that under requirements of P.A. 74, Michigan P.A. of 1970, the corner points mentioned in lines 1 and 2 above were in conformance with regulations and rules therefore as required in the current manual of survey instructions of the United States Department of the Interior, Bureau of Land Management or by a decree of a Court of Law and/or that the corner points mentioned in lines 3, 4 and 5 above were in conformance with the rules of the Michigan Board of Land Surveyors or by a Decree of a Court of Law; established, re-established, monumented, re-monumented, recovered, found as expressed below.

NOTE: Not more than 4 corners, all in the same town and range, may be recorded on this certificate.



A. Description of original monument and accessories and/or subsequent restoration.

ORIGINAL GOVERNMENT SURVEY BY T. WAMPLER, D.S. (1815-1819)

G.L.O. (1819), NORTH 80.00 CHAINS, SET POST COR. S. 26, 27, 34, 35

WITNESSES: LEANING ASPEN 11" N 9 E 8 (LINKS) (5.28') (GONE)
RO 7" S 13 W 20 (LINKS) (13.20') (GONE)

RESURVEY AT THE DIRECTION OF ALBERT E. CHAMPNEY, DIRECTOR OF WAYNE COUNTY BUREAU OF TAXATION

W.P.A. (1930's), IRON SET, NW-35 (#135)

WITNESSES: SE 34.30' 4" BASS (NEW 12") (MEASURED 36.06')
SSW 92.00' 14" OAK (GONE)
SW 92.03' 24" OAK (NEW 42") (MEASURED 91.03' ±)
WSW 62.59' 24" ELM (GONE)
W 30.51' FENCE POST (OF FENCE TO W AND N) (GONE)
NW 43.12' 4" POPLAR (GONE)

\$4.00 REMONUMENTATION

\$10.00 DEED

RECORDED

FOREST E. YOUNGBLOOD, REGISTER OF DEEDS
WAYNE COUNTY, MI

Receipt #41828

B. Description of corner evidence found and/or method applied in restoring or reestablishing corner.

FOUND A 5/8" REBAR CONCRETE MONUMENT BURIED ± 9 INCHES DEEP EAST OF THE CENTERLINE OF MORTON TAYLOR ROAD (AS IT EXISTS IN FORM OF A 15' WD GRAVEL/STONE ROAD) APPROXIMATELY 950' NORTH OF THE MEDIAN OF MICHIGAN AVENUE.

DISTANCE TO I-10 TRAVERSED AS 2654.34'; G.L.O. (1819) RECORD DISTANCE OF 40.00 CHAINS (2640.00'); W.P.A. (1930's) RECORD DISTANCES OF 2655.09' AND 2654.78'

DISTANCE TO J-11 TRAVERSED AS 2597.07'; G.L.O. (1819) RECORD DISTANCE OF 39.90 CHAINS (2593.80'); W.P.A. (1930's) RECORD DISTANCES OF 2597.71' AND 2597.77';

DISTANCE TO H-11 TRAVERSED AS 2661.17'; G.L.O. (1819) RECORD DISTANCE OF 40.10 CHAINS (2646.60'); W.P.A. (1930's) RECORD DISTANCES OF 2660.74' AND 2661.26';

DISTANCE TO I-12 TRAVERSED AS 2638.10'; G.L.O. (1819) RECORD DISTANCE OF 40.00 CHAINS (2640.00'); W.P.A. (1930's) RECORD DISTANCES OF 2638.30' AND 2637.96'

WADE-TRIM/ASSOCIATES, INC. IN-HOUSE RECORDS FOUND 2" IRON (1974) F.B. 823, PG.54

WITNESSES: N.77°40'W. 24.28' PK NAIL S. SIDE 18" COTTONWOOD (GONE)
S.76°20'W. 36.97' PK NAIL N. SIDE 10" ASH (GONE)
S.23°00'W. 76.68' PK NAIL (RECESSED) E. SIDE 12" (NOW 24") RED OAK (MEASURED 76.72')

(CONTINUED ON BACK)

C. Description of monument for corner and accessories established to perpetuate locating the position of the corner.

I-11, SECTION CORNER 26, 27, 34, AND 35, T.2S., R.8E.

A 5/8" REBAR CONCRETE MONUMENT (BURIED) AT 5' ± EAST OF THE CENTERLINE OF MORTON TAYLOR ROAD (AS IT EXISTS IN THE FORM OF A 15' WD. GRAVEL/STONE ROAD) APPROXIMATELY 950' NORTH OF THE MEDIAN OF MICHIGAN AVENUE AND IT IS ACCEPTED AS A CAREFUL AND FAITHFUL PERPETUATION OF THE POSITION OF THE ORIGINAL CORNER.

WITNESSEES: N.21°19'E. 64.90' FOUND A PK NAIL IN ALUMINUM DISC #34970 ON W. SIDE 15" ASH (SUPRA)
N.78°52'E. 16.79' FOUND NAIL IN MSHD BRASS DISC ON N. SIDE 12" BASSWOOD (SUPRA)
S.21°28'W. 76.39' SET NAIL IN W.C.R. BRASS WITNESS DISC ON E. SIDE 24" OAK (SUPRA)
N.80°05'W. 39.03' SET NAIL IN W.C.R. BRASS WITNESS DISC ON N. SIDE 15" OAK

PLACED A REMONUMENTATION BRASS DISC AND PVC CAP #21586 ON ABOVE 5/8" REBAR CONCRETE MONUMENT I-11

Signed by

Walter J. Zbikowski

Date

DEC. 8, 1997

WALTER J. ZBIKOWSKI

Surveyor's Michigan License No.

21586

B. CONTINUED

L.23835, P.350, REPLACED BENT 1-1/2" PIPE WITH 4" X 36" CONCRETE MONUMENT (1987) RC #915

WITNESSES: N.85°E. 16.87' NAIL AND TAG IN 9" BASSWOOD (MEASURED 16.79')
N.70°W. 24.26' NAIL AND TAG IN 24" POPLAR (GONE)
S.60°W. 34.92' NAIL AND TAG IN 12" OAK (GONE)
S.80°W. 37.13' NAIL AND TAG IN 14" ASH (GONE)

WADE-TRIM/ASSOCIATES, INC. IN-HOUSE RECORDS, FOUND CONCRETE MONUMENT WITH I.D. PLATE (1988) FB. 1211, P.39

WITNESSES: N.21°19'E. 65.16' PK IN ALUMINUM DISC #34970 ON W. SIDE 12" TREE (MEASURED 64.90')
N.78°59'E. 16.90' NAIL IN MDSH BRASS DISC ON N. SIDE 10" TREE (MEASURED 16.79')
S.49°09'W. 90.31' PK NE SIDE 27" TREE (MEASURED 91.03' ±)
N.78°08'W. 24.28' REFERENCE DISC NAIL S. SIDE 18" TREE (GONE)

SURVEY &
REMONUMENTATION

MAR 17 1998

SECTION

FILE DO NOT MAIL