

LAND CORNER RECORDATION CERTIFICATE
Filing Requirement of Act 74, Mich. P.A. 1970

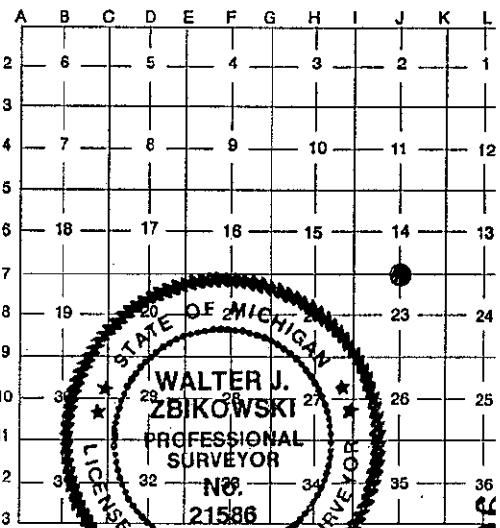
LIBER **29337** PAGE **562**

For corners in

<u>WAYNE</u> (County)	Located in:	Corner Code #
	TOWNSHIP OF CANTON #07	
1. Public Land Survey	T2S R8E	J-7
	T_____ R_____	_____
	T_____ R_____	_____
	T_____ R_____	_____
2. Property Controlling in Section	S_____ T_____ R_____	_____
	S_____ T_____ R_____	_____
3. Miscellaneous Property in Sec.	S_____ T_____ R_____	_____
	S_____ T_____ R_____	_____
4. Lot No. _____, Recorded Plat _____		
5. Private Claims _____		

Compliance with
 ACT 345, P.A. 1990
 APPROVED ON: 11-13-96 *W.B.J.*
 WAYNE COUNTY REMONUMENTATION
 PEER GROUP COMMITTEE
 Register of Deeds Stamp & File Number

I, WALTER J. ZBIKOWSKI, in a field survey on OCTOBER 9, 1996, do hereby certify that under requirements of P.A. 75, Michigan P.A. of 1970, the corner points mentioned in lines 1 and 2 above were in conformance with regulations and rules therefore as required in the current manual of survey instructions of the United States Department of the Interior, Bureau of Land Management or by a decree of a Court of Law and/or that the corner points mentioned in lines 3, 4 and 5 above were in conformance with the rules of the Michigan Board of Land Surveyors or by a Decree of a Court of Law; established, re-established, monumented, re-monumented, recovered, found as expressed below.



NOTE: Not more than 4 corners, all in the same town and range, may be recorded on this certificate.

A. Description of original monument and accessories and/or subsequent restoration.
ORIGINAL GOVERNMENT SURVEY BY T. WAMPLER, D.S. (1815-1819)
 G.L.O. (1819) SET 1/4 S. POST AT AV. DIST (DESCRIPTION OF CORNER NOT STATED IN NOTES)
 WITNESSES: MAPLE 7 N 16 E 10 (6.80' REC) (GONE)
 DO 4 S 24 W 12 (7.92' REC) (GONE)
RESURVEY AT THE DIRECTION OF ALBERT E. CHAMPNEY, DIRECTOR OF WAYNE COUNTY BUREAU OF TAXATION
 W.P.A. (1930s) IRON N-23 (#82)
 WITNESSES: NE 61.20' TELEPHONE POLE (GONE)
 ESE 57.52' TELEPHONE POLE (GONE)
 SE 27.40' (NW CORNER - NOW DETERIORATED) TO HEADWALL CULVERT (MEASURED 27.64'±)
 * SW 28.20' (NE CORNER - NOW DETERIORATED) TO HEADWALL CULVERT (MEASURED 28.68'±)
 WSW 81.60' TELEPHONE POLE (GONE)
 NW 59.77' DETROIT EDISON POLE (GONE) \$ 10.00 DEED
 W.C.R.C. (1972) MON. IN BOX N-23 (#82) 12 DEC 96 2:15 P.M. RECEIPT# 62B
 WITNESSES: NE 60.38' DETROIT EDISON POLE RECORDED
 SE 53.69' MICHIGAN BELL TELEPHONE POLE (GONE) FOREST E. YOUNGBLOOD, REGISTER OF DEEDS
 * SW 41.37' "X" CUT IN HEADWALL (GONE TO WEAR) WAYNE COUNTY, MI
 WNW 53.33' CENTER OF G.V.&W. (MEASURED 53.33') \$ 4.00 REMONUMENTATION
 NW 49.87' FACE W.C.R.C. SIGN (GONE)

* AS OF OCTOBER 9, 1996 HEADWALL AND CULVERT HAS BEEN REMOVED.

B. Description of corner evidence found and/or method applied in restoring or reestablishing corner.
 FOUND A 1/2" IRON PIPE CONCRETE MONUMENT IN A BROKEN ROAD BOX NEAR CENTER OF LILLEY AND EASTBOUND CHERRY HILL ROADS (BOTH 2 LANE ASPHALT SURFACED)
 DISTANCE TO K-7 MEASURED AS 2618.50'; RECORD G.L.O. (1819) DISTANCE OF 39.60 CHAINS (2613.60') RECORD
 W.P.A. (1930s) DISTANCES OF 2618.45' AND 2618.26'; RECORD CS L.18398 P.540 (1973) DISTANCE OF 2618.75'

(CONTINUED ON BACK)

C. Description of monument for corner and accessories established to perpetuate locating the position of the corner.
 J-7 SECTION CORNER 14, 23 T.2S., R.8E.
 PLACED A REMONUMENTATION BRASS DISC AND PVC CAP #21586 ON ABOVE FOUND 1/2" IRON PIPE, CONCRET MONUMENT, IN A BROKEN ROAD BOX NEAR THE CENTER OF LILLEY AND EASTBOUND CHERRY HILL ROADS (BOTH 2 LAN ASPHALT SURFACED ROADS) AND IT IS ACCEPTED AS A CAREFUL AND FAITHFUL PERPETUATION OF THE POSITION OF TH ORIGINAL CORNER.
 WITNESSES: N.40°53'E. 63.60' FOUND PK NAIL IN METAL DISC #30096 IN SOUTHEAST SIDE OF UTILITY POL
 S.42°20'E. 55.59' SET NAIL IN W.C.R. BRASS WITNESS DISC ON SOUTHWEST SIDE OF GUY POL
 N.34°01'W. 58.44' FOUND NAIL IN PLAIN WASHER ON EAST SIDE OF POWER POLE (SUPRA)
 N.51°24'W. 61.82' SOUTHERLY CORNER OF 24" SQUARE STEEL BASE TO SANITARY SEWER VEN
 PIPE

Signed by Walter J. Zbikowski
 WALTER J. ZBIKOWSKI
 Surveyor's Michigan License No. 21586

Date DEC. 11, 1996
 4K
 100
 M

SECTION B:(CONTINUED)

DISTANCE TO I-7 MEASURED AS 2619.30'; RECORD G.L.O. (1819) DISTANCE OF 39.60' CHAINS (2613.60') RECORD W.P.A. (1930s) DISTANCES OF 2618.94' AND 2619.16"

DISTANCE TO J-6 MEASURED AS 2654.35'; RECORD W.P.A. (1930s) DISTANCE OF 2654.34'

DISTANCE TO J-8 MEASURED AS 2654.16'; RECORD W.P.A. (1930s) DISTANCE OF 2654.01'

L.18765 P.407 FOUND 1/2" IRON BAR IN MONUMENT BOX AND PLACE 1/2" PIPE EXTENSION TO IRON BAR BRINGING SAID POINT NEARER TO NEW ROAD SURFACE (1973) LCRC #322

SOUTHWESTERLY	32.79	CONCRETE NAIL IN CENTER OF CONCRETE HEADWALL (GONE)
SOUTH, SOUTHWEST	57.36	PK NAIL IN WEST FACE OF BELL POLE (GONE)
SOUTHWESTERLY	53.65	PK NAIL IN NORTH FACE OF BELL POLE (GONE)
NORTHEASTERLY	65.41	PK NAIL IN SOUTH FACE OF POWER POLE (MEASURED 65.36)

L.20102 P.661 TO 664 FOUND RE-ROD IN MON. BOX (1978) CS #1476

N.50°E.	65.37	PK NAIL (ON SOUTHEAST SIDE OF) UTILITY POLE (MEASURED 65.36)
S.43°E.	53.73	PK NAIL (ON NORTHEAST SIDE OF) UTILITY POLE (GONE)
N.35°W.	58.83	SET NAIL (DOUBLE HEADED) IN (SOUTHWEST SIDE OF) UTILITY POLE (MEASURED 58.76)

L.25009 P.61 (60d)

NE	65.27	SPIKE IN 1/2" PIPE IN MONUMENT BOX (1990) LCRC #995
SE	57.34	(DOUBLE HEADED) NAIL AND WASHER (PLAIN) IN SE SIDE POWER POLE (MEASURED 65.29)
NW	58.50	NAIL AND WASHER W SIDE GUY POLE (GONE)
		NAIL AND WASHER (PLAIN) ON E SIDE OF POWER POLE (MEASURED 58.44)

FILE DO NOT MAIL