

10001064

RECEIVED
FEB 28 2000

LAND CORNER RECORDATION CERTIFICATE
Filing Requirement of Act 74, Mich. P.A.1970

SECTION

FILE DO NOT MAIL

For corners in

WAYNE (County)

Located In: WESTLAND Corner Code # D-5

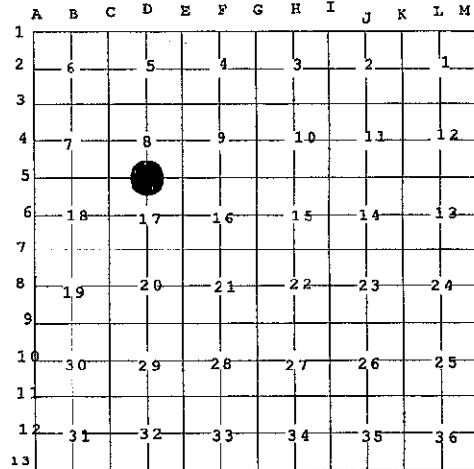
Liber-30821 Page-40
99588805 12/22/1999
F.E. Youngblood, Wayne Co. Register of Deeds.

- 1. Public Land Survey T 2S R 9E NANKIN TWP(08)
- 2. Property Controlling in Section S T R
- 3. Miscellaneous Property in Sec. S T R

Compliance with ACT 345, P.A. 1990
APPROVED ON: 12-10-99
WAYNE COUNTY REMONUMENTATION PEER GROUP COMMITTEE
Register of Deeds Stamp & File Number

- 4. Lot No. _____, Recorded Plat _____
- 5. Private Claims _____

I, PETER P. PALCZYNSKI, P.S. in a field survey on 30 NOV _____, 19 99 do hereby state that under requirements of P.A. 74, Michigan P.A. of 1970, the corner points mentioned in lines 1 and 2 above were in conformance with regulations and rules therefore as required in the current manual of survey instructions of the United States Department of the Interior, Bureau of Land Management or by a decree of a Court of Law and /or that the corner points mentioned in lines 3, 4 and 5 above were in conformance with the rules of the Michigan Board of Land Surveyors or by a Decree of a Court of Law; established, re-established, monumented, recovered, found as expressed below:



NOTE: Not more than 2 corners, all in the same town and range, may be recorded on this certificate.

A. Description of original monument and accessories and/or subsequent restoration: D-5
1816 GLO: SET POST POPLAR 9" S76W 104 LKS.
JOSEPH FLETCHER D.O. 10" EAST 425 LKS

SEE BACK OF THIS SHEET (NEXT PAGE)
FOR CONTINUATION OF SECTION "A"

B. Description of corner evidence found and/or method applied in restoring or reestablishing corner: D-5
FD 3/4" IRON PIPE IN MON BOX @ CENTERLINE INTERSECTION OF FORD & CARLSON (SOUTH) CENTRAL CITY PARKWAY (NORTH) RDS. (64' WIDE ASPHALT PAVEMENT WITH CONC CURBS.) REPLACED PIPE WITH WCR ALUMINUM CAP STAMPED "PPP-PS 30096" ON 1/2" STEEL BAR IN CONC MON / MON BOX.
CORNER POSITION VERIFIED USING COMPARISONS TO RECORD INFORMATION FROM SECTION "A".

MEASURED:
D-5 / C-5 = 2630.37 (2630.73 / 2630.49 WPA) C-5 / D-5 / D-4 = 89 16' 08" (89 14' 45" WPA)
D-5 / D-4 = 2586.36 (2586.36 / 2586.79 WPA) D-4 / D-5 / E-5 = 91 20" 01" (91 21' 00" WPA)
D-5 / E-5 = 2630.09 (2630.32 / 2629.81 WPA / 2630.07 PLAT)

C. Description of monument for corner and accessories established to perpetuate locating the position of the corner: D-5
FD 3/4" IRON PIPE IN MON BOX @ CENTERLINE INTERSECTION OF FORD & CARLSON (SOUTH), CENTRAL CITY PARKWAY (NORTH) RDS. (64' WIDE ASPHALT PAVEMENT WITH CONC CURBS.) REPLACED PIPE WITH WCR ALUMINUM CAP STAMPED "PPP-PS 30096" ON 1/2" STEEL BAR IN CONC MON / MON BOX.
CUT "X" IN W BOLT TRAFFIC CONTROL TOWER BASE(9)(R=59.94) N22E 59.97'
CUT "X" IN NW RIM OF GV & W S29E 60.55'
SET NAIL/WCR TAG IN NW FACE UTILITY POLE(11)(R=95.62) S50W 95.92'
CUT "X" IN E BOLT TRAFFIC CONTROL TOWER BASE S58W 109.00'
CUT "X" IN SE BOLT OF LIGHT POLE BASE N69W 105.23'
SE CORNER OF BRICK SIGN N54W 145.17'

SELECTED LOCATION IS ACCEPTED BY THE CONTRACTOR AND IS GENERALLY ACCEPTED BY PROFESSIONAL SURVEYORS AS THE BEST AVAILABLE EVIDENCE OF THE POSITION OF THE ORIGINAL CORNER.

Signed by _____

Date 1 DEC 99

Surveyor's Michigan License No. 30096

2S9ED-5.DOC



MICHIGAN STATE BOARD OF PROFESSIONAL SURVEYORS, JAN. 28, 1971
REVISED MAY 14, 1975
REVISED JAN., 1983
REVISED OCT., 1995

R LCR 12 4R 2 Pgs A DBJ

1999 WAYNE COUNTY REMONUMENTATION PROGRAM

History compiled by:
 Peter P. Palczynski, P.S. # 30096
 AMBIT LAND SURVEYORS, INC.

NANKIN TOWNSHIP TOWN 2 SOUTH, RANGE 9 EAST
 D-5 (SECTION CORNER 8 & 17)

DATE	COMPANY SURVEYOR JOB #	P.A. 74 L.C.R.C. #	LOCATION OF SURVEY	MONUMENT DESCRIPTION	WITNESSES	BEARING & DISTANCE	ID #	COMMENT
1816	G.L.O. JOSEPH FLETCHER W.P.A.			SET POST	POPLAR 9" D.O. 10"	S76°W 104LKS EAST 425 LKS		NOTES = 39.98 CHAINS
1930'S				CROSS (N-17 #62)	TEL. POLE ANCHOR POLE S EDGE PVT POLE	NE 101.93 SE 49.41' S 15.95' NW 40.42'	1 2 3 4	GONE GONE GONE GONE W.P.A. RECORD: D-5 / C-5 = 2630.73' / 2630.49' D-5 / D-4 = 2586.36' / 2586.79' D-5 / E-5 = 2630.32' / 2629.81' C-5 / D-5 / D-4 = 89 14' 45" D-4 / D-5 / E-5 = 91 21' 00" N/A
1924	H H HUDSON CIVIL ENGINEER		NW ¼ SECTION 17 T2S R 9E	NOT STATED	NOT STATED	NOT STATED		
1925	GEORGE JEROME CIVIL ENGINEER & SURVEYOR		SE ¼ SECTION 18 T2S R9E	NOT STATED	NOT STATED	NOT STATED		D-5 / E-5 = 2630.07'
1970	WCRC SECTION CORNER WITNESS RECORD		D-5 T2S R9E	IRON #62	MBT POLE MBT POLE X CUT IN 42" X-TILE ED POLE	NE 67.80' SE 62.20' SW 64.60' NW 56.10'	5 6 7 8	GONE GONE GONE GONE
1995	ROBERT C HARR, P.S. #39081		D-5 T2S R9E	FD ½" IRON ROD IN MON BOX	WEST BOLT BASE UT POLE PK NAIL CONC BASE UT POLE PK NAIL SE SIDE UT POLE TOP NE BOLT BASE UT POLE	N21E 58.94' S20E 50.07' S50W 95.62' S69W 105.45'	9 10 11 12	M = 59.97' GONE M = 95.92' GONE

LIBERTY 1308201