

APR 05 1996

LAND CORNER RECORDATION CERTIFICATE
Filing Requirement of Act 74, Mich. P.A. 1970

For corners in COMMISSION

WAYNE (County) Located In: Corner Code # E-3

1. Public Land Survey T 2S R 9E CITY OF WESTLAND NANKIN TOWNSHIP

2. Property Controlling in Section S T R

3. Miscellaneous Property in Sec. S T R

4. Lot No. , Recorded Plat

5. Private Claims

Compliance with ACT 345, P.A. 1990

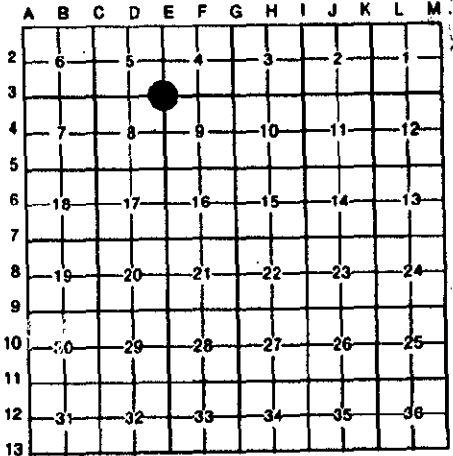
APPROVED ON: 12-14-95

WAYNE COUNTY REMONUMENTATION PEER GROUP COMMITTEE

Register of Deeds Stamp & File Number

95270185

PETER P. PALCZYNSKI in a field survey on 13 DECEMBER, 19 95, do hereby certify that under requirements of P.A. 74, Michigan P.A. of 1970, the corner points mentioned in lines 1 and 2 above were in conformance with regulations and rules therefore as required in the current manual of survey instructions of the United States Department of the Interior, Bureau of Land Management or by a decree of a Court of Law and/or that the corner points mentioned in lines 3, 4 and 5 above were in conformance with the rules of the Michigan Board of Land Surveyors or by a Decree of a Court of Law; established, re-established, monumented, re-monumented, recovered, found as expressed below:



NOTE: Not more than 4 corners, all in the same town and range, may be recorded on this certificate.

A. Description of original monument and accessories and/or subsequent restoration:
1816 G.L.O. - SET POST W.O. 12" S69°W 74 LKS.
JOSEPH FLETCHER DO. 20" EAST 30 LKS.

\$ 10.00 DEED
18 DEC 95 3:01 P.M. RECEIPT# 75B
RECORDED
FOREST E. YOUNGBLOOD, REGISTER OF DEEDS
WAYNE COUNTY, MI

SEE BACK OF THIS SHEET (NEXT PAGE) FOR CONTINUATION OF SECTION "A"

\$ 4.00 REMONUMENTATION

B. Description of corner evidence found and/or method applied in restoring or reestablishing corner:

FOUND 1/2" STEEL BAR IN CONCRETE MONUMENT / MONUMENT BOX, AT CENTERLINE OF WARREN ROAD & YALE AVENUE IN CONCRETE PAVEMENT.

MEASURED:
D-3/E-3/F-3 = 179°56'16"
F-3/E-3/D-3 = 180°03'44"
F-3/E-3/E-4 = 89°32'25"
E-4/E-3/D-3 = 90°31'19"

CORNER POSITION VERIFIED USING COMPARISONS TO RECORD INFORMATION FROM SECTION "A".

MEASURED:
E-3 / D-3 = 2634.56'
E-3 / F-3 = 2623.14'
E-3 / E-4 = 2630.12'



C. Description of monument for corner and accessories established to perpetuate locating the position of the corner:

E-3, T2S, R9E SET NAIL/WCR TAG IN EAST FACE OF 18" OAK N16°E 87.37'

FOUND 1/2" STEEL BAR IN CONCRETE MONUMENT / MONUMENT BOX, AT CENTERLINE OF WARREN ROAD & YALE AVENUE IN CONCRETE PAVEMENT. SET WAYNE COUNTY REMON. BRASS MARKER AND CAP "PPP PS 30096" ON BAR.

FOUND CUT "X" IN NORTH GATE VALVE & WELL RIM S51°E 73.82'

FOUND CUT "X" IN EAST SANITARY MANHOLE RIM S17°E 37.54'

FOUND CUT "X" IN CONCRETE SIDEWALK S38°W 74.91'

FOUND CONCRETE MONUMENT IN MON BOX ON SECTION LINE WEST 2614.57'

CENTERLINE OF FIRE HYDRANT STEM N72°W 159.74'

SELECTED LOCATION IS ACCEPTED BY THE CONTRACTOR AND IS GENERALLY ACCEPTED BY PROFESSIONAL SURVEYORS AS THE BEST AVAILABLE EVIDENCE OF THE POSITION OF THE ORIGINAL CORNER.

Signed by [Signature] Date 15 DEC 95

Surveyor's Michigan License No. 30096

Continuation of Section "A"

1995 WAYNE COUNTY REMONUMENTATION PROGRAM

History compiled by:
Peter P. Paiczynski, P.S. #30696
AMBIT LAND SURVEYORS, INC.

NANKIN TOWNSHIP TOWN 2 SOUTH, RANGE 9 EAST
E-3 (SECTION CORNER 4, 5, 8 & 9)

DATE	COMPANY SURVEYOR JOB #	P.S. #	P.A. 74 L.C.R.C.	LOCATION OF SURVEY	MONUMENT DESCRIPTION	WITNESSES	BEARING & DISTANCE	ID #	COMMENT
1816	G.L.O. JOSEPH FLETCHER				'SET POST	W.O. 12" D.O. 20"	S69°W 74 LKS. EAST 30 LKS.		NOTES = 40.00 CHAINS
1930'S	W.P.A.				IRON (NW-9 #35)	18" OAK 12" OAK 12" APPLE	NE 31.8' NE 93.22' SE 30.12'	1 2 3	GONE GONE GONE W.P.A. RECORD: E-3 / E-2 = 2639.83' & 2641.76' E-3 / F-3 = 2623.27' E-3 / E-4 = 2628.36' & 2628.63' E-3 / D-3 = 2633.10' & 2634.89' D-3 / E-3 / E-2 = 89°57'30"(?) E-2 / E-3 / F-3 = 91°30'40" F-3 / E-3 / E-4 = 89°30'50" E-4 / E-3 / D-3 = 90°10'40"
1972 MARCH	PAUL MONOHON ASSOC. PAUL MONOHON, R.L.S. JOB #1459-S	#6201		N.E. 1/4 SECTION 8	IRON IN MON. BOX	P.K. IN 28" TREE P.K. IN 14" TREE P.K. IN POLE	NORTH 77.20' N65°54'E 96.30' S56°50' E 62.15'	4 5 6	
1973 MAY	RAPHAEL LANDINI, RLS	#16953		S.W. 1/4 SECTION 4	IRON IN BOX	NAIL IN 24" OAK NAIL IN 15" OAK NAIL IN BELL POLE NAIL IN BELL POLE NAIL IN 24" OAK NAIL IN 15" OAK NAIL IN BELL POLE NAIL IN BELL POLE	N05°E 77.18' N45°W 61.71' S75°W 120.32' S50°E 62.10' N05°E 77.18' N45°W 61.71' S75°W 120.32' S50°E 62.10'	7 8 9 10 7 8 9 10	
1976 MAY	WARNER, CANTRELL & PADMOS, INC. TERENCE B. CANTRELL, R.L.S.	#5782		S.W. 1/4 SECTION 4	MONUMENT IN BOX				

FILED DO NOT MAIL