

APR 05 1996

LAND CORNER RECORDATION CERTIFICATE
Filing Requirement of Act 74, Mich. P.A. 1970

COMMISSION

For corners in

WAYNE
(County)

Located In:

Corner Code #

- 1. Public Land Survey T 2 S R 9 E E-9
T R CITY OF WESTLAND
T R NANKIN TOWNSHIP
T R
- 2. Property Controlling S T R
in Section S T R
- 3. Miscellaneous S T R
Property in Sec. S T R

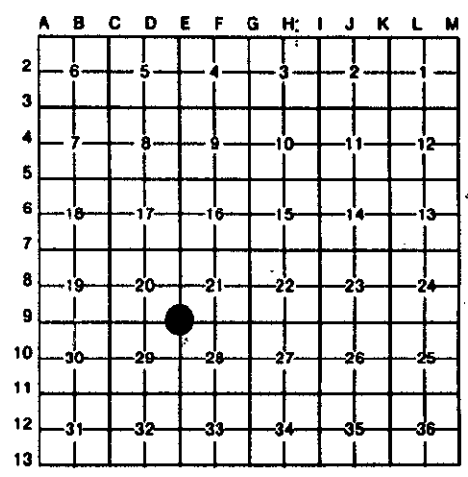
95270181

Compliance with
ACT 345, P.A. 1990

APPROVED ON: 12-11-95
WAYNE COUNTY REMONUMENTATION
PEER GROUP COMMITTEE

Register of Deeds Stamp & File Number

- 4. Lot No. _____, Recorded Plat _____
- 5. Private Claims _____



I, **PETER P. PALCZYNSKI** in a field survey on **13 DECEMBER**, 19 **95**, do hereby certify that under requirements of P.A. 74, Michigan P.A. of 1970, the corner points mentioned in lines 1 and 2 above were in conformance with regulations and rules therefore as required in the current manual of survey instructions of the United States Department of the Interior, Bureau of Land Management or by a decree of a Court of Law and/or that the corner points mentioned in lines 3, 4 and 5 above were in conformance with the rules of the Michigan Board of Land Surveyors or by a Decree of a Court of Law; established, re-established, monumented, re-monumented, recovered, found as expressed below:

NOTE: Not more than 4 corners, all in the same town and range, may be recorded on this certificate.

A. Description of original monument and accessories and/or subsequent restoration:

1816 G.L.O. - SET POST W.O. 6" S66°W 12 LKS.
JOSEPH FLETCHER B.O. 9" N85°E 11 LKS.

\$ 4.00 REMONUMENTATION
\$ 10.00 DEED
18 DEC 95 3:00 P.M. RECEIPT# 75B
RECORDED
FOREST E. YOUNGBLOOD, REGISTER, OF DEEDS
WAYNE COUNTY, MI

SEE BACK OF THIS SHEET (NEXT PAGE)
FOR CONTINUATION OF SECTION "A"

B. Description of corner evidence found and/or method applied in restoring or reestablishing corner:

FOUND 1/2" STEEL BAR IN CONCRETE MONUMENT / MONUMENT BOX, AT CENTERLINE OF WAYNE ROAD & PALMER ROAD IN ASPHALT PAVEMENT.

MEASURED:
D-9/E-9/E-8 = 90°51'42"
E-8/E-9/F-9 = 90°03'02"
F-9/E-9/D-9 = 179°05'16"
D-9/E-9/F-9 = 180°54'44"

CORNER POSITION VERIFIED USING 1 WITNESS AND COMPARISONS TO RECORD INFORMATION FROM SECTION "A".

MEASURED:
E-9 / D-9 = 2636.51'
E-9 / E-8 = 2623.53'
E-9 / F-9 = 2625.92'



C. Description of monument for corner and accessories established to perpetuate locating the position of the corner:

E-9, T2S, R9E	FOUND DOUBLE HEADED NAIL/ TAG "WCRC REF PT" IN NORTHEAST	N52°E	48.62'
FOUND 1/2" STEEL BAR IN CONCRETE MONUMENT / MONUMENT BOX, AT CENTERLINE OF WAYNE ROAD & PALMER ROAD IN ASPHALT PAVEMENT. SET WAYNE COUNTY REMON. BRASS MARKER AND CAP "PPP PS 30096" ON BAR.	FACE UTILITY POLE		
	CENTERLINE OF FIRE HYDRANT STEM	N65°E	80.08'
	SET NAIL/WCR TAG IN SOUTHWEST FACE OF UTILITY POLE	S72°E	113.38'
	FOUND DOUBLE HEADED NAIL/ TAG "WCRC REF PT" IN NORTHEAST	S19°E	70.63'
	FACE UTILITY POLE		
	SET NAIL/WCR TAG IN NORTHWEST FACE OF UTILITY POLE	S61°W	71.33'
	SET CUT "X" IN NORTH GATE VALVE & WELL RIM	N55°W	71.44'
	FOUND STEEL BAR (5) ?	N47°W	82.66'

SELECTED LOCATION IS ACCEPTED BY THE CONTRACTOR AND IS GENERALLY ACCEPTED BY PROFESSIONAL SURVEYORS AS THE BEST AVAILABLE EVIDENCE OF THE POSITION OF THE ORIGINAL CORNER.

Signed by [Signature] Date 15 DEC 95

Surveyor's Michigan License No. 30096

1995 WAYNE COUNTY REMONUMENTATION PROGRAM

Continuation of Section "A"

History compiled by
 Peter P. Palczynski, P.S. # 30096
 AMBIT LAND SURVEYORS, INC.

NANKIN TOWNSHIP TOWN 2 SOUTH, RANGE 9 EAST
 E-9 (SECTION CORNER 20, 21, 28 & 29)

DATE	COMPANY SURVEYOR JOB #	P.S. #	P.A. 74 L.C.R.C.	LOCATION OF SURVEY	MONUMENT DESCRIPTION	WITNESSES	BEARING & DISTANCE	ID #	COMMENT
1816	G.L.O. JOSEPH FLETCHER				SET POST	W.O. 6' B.O. 9'	S66°W 12 LKS. N85°E 11 LKS.		NOTES = 40.00 CHAINS
1930'S	W.P.A.				IRON (NW-28 #113)	CROSS ON STREET SIGN POST EDISON POLE 30' WHITE PINE EDISON POLE IRON	NE 34.15' SE 51.05' SW 64.68' SW 32.90' NW 83.20'	1 2 3 4 5	GONE GONE GONE GONE FD IRON: M=82.66' W.P.A. RECORD: E-9/E-8 = 2623.41' & 2623.66' E-9/F-9 = 2625.72' & 2625.75' E-9/E-10 = 2632.76' E-9/D-9 = 2636.16' & 2636.53' D-9/E-9/E-8 = 90°51'30" E-8/E-9/F-9 = 90°03'20" F-9/E-9/E-10 = 89°37'38" E-10/E-9/D-9 = 89°28'22"

FILED DO NOT MAIL