

MAR 17 1998
FILE DO NOT MAIL
SECTION

LAND CORNER RECORDATION CERTIFICATE
Filing Requirement of Act 74, Mich. P.A. 1970

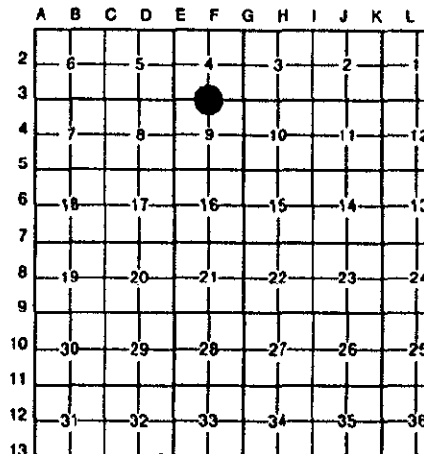
For corners in

| | | |
|------------------------------------|---------------------------|------------------|
| <u>WAYNE</u> (County) | Located In: | Corner Code # |
| 1. Public Land Survey | T <u>2 S</u> R <u>9 E</u> | F-3 |
| | T _____ R _____ | CITY OF WESTLAND |
| | T _____ R _____ | NANKIN TOWNSHIP |
| | T _____ R _____ | |
| 2. Property Controlling in Section | S _____ T _____ R _____ | |
| | S _____ T _____ R _____ | |
| 3. Miscellaneous Property in Sec. | S _____ T _____ R _____ | |
| | S _____ T _____ R _____ | |

Compliance with ACT 345, P.A. 1990
APPROVED ON: 12-11-97 *DPJ*
WAYNE COUNTY REMONUMENTATION PEER GROUP COMMITTEE

Register of Deeds Stamp & File Number

- 4. Lot No. _____, Recorded Plat _____
- 5. Private Claims _____



I, PETER P. PALCZYNSKI in a field survey on 1 DECEMBER, 19 97, do hereby certify that under requirements of P.A. 74, Michigan P.A. of 1970, the corner points mentioned in lines 1 and 2 above were in conformance with regulations and rules therefore as required in the current manual of survey instructions of the United States Department of the Interior, Bureau of Land Management or by a decree of a Court of Law and/or that the corner points mentioned in lines 3, 4 and 5 above were in conformance with the rules of the Michigan Board of Land Surveyors or by a Decree of a Court of Law; established, re-established, monumented, re-monumented, recovered, found as expressed below:

NOTE: Not more than 4 corners, all in the same town and range, may be recorded on this certificate.

A. Description of original monument and accessories and/or subsequent restoration:

1816 G.L.O. - SET POST MAPLE 12" S5°E 28 LKS.
JOSEPH FLETCHER ELM 12" N47°E 37 LKS.

\$4.00 REMONUMENTATION
RECORDED
FOREST E. YOUNGBLOOD, REGISTER OF DEEDS
WAYNE COUNTY, MI
Receipt #42846

SEE BACK OF THIS SHEET (NEXT PAGE) FOR CONTINUATION OF SECTION "A"

\$10.00 DEED

B. Description of corner evidence found and/or method applied in restoring or reestablishing corner:

FOUND 1/2" IRON PIPE IN MONUMENT BOX, AT CENTERLINE OF WARREN ROAD, E. OF WILDWOOD AVENUE IN 61' WIDE ASPHALT PAVEMENT WITH CONCRETE CURBS. SET CONCRETE MONUMENT & GREY "WAYNE COUNTY REMONUMENTATION" CAP ON CONCRETE MONUMENT.

MEASURED:
E-3/F-3/G-3 = 179°56'33"
(WPA = 179°56'30")
G-3/F-3/E-3 = 180°03'27"
(WPA = 180°13'50")
G-4/F-3/F-4 = 89°41'41"
(WPA = NOT STATED)

CORNER POSITION VERIFIED USING COMPARISONS TO RECORD INFORMATION FROM SECTION "A".

MEASURED:
F-3 / E-3 = 2623.18' (WPA=2623.27'/2623.37')
F-3 / G-3 = 2639.30' (WPA=2638.52'/2639.08')
F-3 / F-4 = 2623.54' (WPA=2623' +/-)



C. Description of monument for corner and accessories established to perpetuate locating the position of the corner:

| | | | |
|--|---|-------|---------|
| F-3, T2S, R9E | SET NAIL/WCR TAG IN SOUTHEAST FACE OF 18" ASH | N38°E | 78.88' |
| FOUND 1/2" IRON PIPE IN MONUMENT BOX, AT CENTERLINE OF WARREN ROAD, E. OF WILDWOOD AVENUE IN 61' WIDE ASPHALT PAVEMENT WITH CONCRETE CURBS. SET CONCRETE MONUMENT & GREY "WAYNE COUNTY REMONUMENTATION" CAP ON CONCRETE MONUMENT IN MON BOX. | CENTERLINE OF FIRE HYDRANT STEM | S77°E | 215.72' |
| | SET NAIL/WCR TAG IN NORTHEAST FACE OF 18" ASH | S37°E | 56.63' |
| | FOUND CUT "X" IN NORTHWEST BOLT OF LIGHT POLE BASE | S20°W | 40.19' |
| | SET NAIL/WCR TAG IN NORTHEAST FACE OF 20" ASH | S65°W | 118.73' |
| | FOUND STEEL BAR @ SUB. CORNER | S66°W | 145.42' |
| | FOUND CUT "X" IN NORTHEAST RIM OF GATE VALVE & WELL | N37°W | 65.36' |
| | SW CORNER OF HOUSE #7218 (5) (R=84.95') | N03°W | 84.86' |
| | BACK OF CONCRETE CURB | NORTH | 30.5' |

SELECTED LOCATION IS ACCEPTED BY THE CONTRACTOR AND IS GENERALLY ACCEPTED BY PROFESSIONAL SURVEYORS AS THE BEST AVAILABLE EVIDENCE OF THE POSITION OF THE ORIGINAL CORNER.

Signed by *DPJ* Date 11 DEC 97

Surveyor's Michigan License No. 30096

R-LCR-10-4R-2PC-11 *DPJ*

1997 WAYNE COUNTY REMONUMENTATION PROGRAM

NANKIN TOWNSHIP TOWN 2 SOUTH, RANGE 9 EAST
F-3 (SECTION CORNER 4, & 9)

History compiled by:
Peter P. Paiczynski, P.S. # 30096
AMBIT LAND SURVEYORS, INC.

| DATE | COMPANY SURVEYOR JOB # | P.S. # | P.A. 74 L.C.R.C. | LOCATION OF SURVEY | MONUMENT DESCRIPTION | WITNESSES | BEARING & DISTANCE | ID # | COMMENT |
|-------------------|---|--------|--|--------------------|--|--|---|------------------|---|
| 1816 | G.L.O. JOSEPH FLETCHER | | | | SET POST | MAPLE 12" ELM 12" | S5°E 28 LKS. N47°E 37 LKS. | | NOTES = 39.965 CHAINS |
| 1930'S | W.P.A. | | | | IRON (N-9 #34) | TWIN ELM 15" ELM FENCE POST 8" WALNUT | NE 111.84' NE 161.83' S 23.75' NW 68.52' | 1 2 3 4 | GONE GONE GONE GONE W.P.A. RECORD: F-3 / E-3 = 2623.27' / 2623.37' F-3 / G-3 = 2638.52' / 2639.08' F-3 / F-4 = 2623+/- E-3 / F-3 / G-3 = 179°56'30" G-3 / F-3 / E-3 = 180°13'50" G-3 / F-3 / F-4 = NOT SHOWN F-4 / F-3 / E-3 = NOT SHOWN M=84.86' GONE GONE GONE |
| 1978 SEPTEMBER | ROSKELLY & JEKABSON ASSOC. ROBERT P. ROSKELLY, RLS | #18663 | L.C.R.C.#616, L. 20257, P. 606-607. | S.W. 1/4 SECTION 4 | FOUND CONCRETE MONUMENT IN COUNTY ROAD BOX | S.W. CORNER HOUSE #7218 NAIL IN UTILITY POLE NAIL IN 12" ASH NAIL IN UTILITY POLE | N5°E 84.95' N50°E 84.92' S40°E 59.56' N40°W 60.90' | 5 6 7 8 | |
| 1988 OCTOBER | HENNESSEY ENG. INC. ROBERT C. SHEPHERD, LS | #31605 | CS #1939 L. 23982, P. 825 | S.E. 1/4 SECTION 4 | NOT STATED | NOT STATED | | | F-3 / G-3 = 2637.55' |

SURVEY &
REMONUMENTATION

MAR 17 1998

SECTION