

FEB 28 2000

10001064

LAND CORNER RECORDATION CERTIFICATE
Filing Requirement of Act 74, Mich. P.A.1970

SECTION

FILE DO NOT MAIL

For corners in

WAYNE (County) Located In: WAYNE Corner Code # G-11

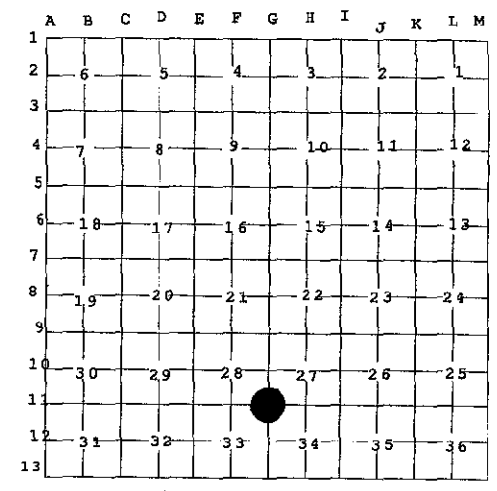
Liber-30821 Page-42
99588846 12/22/1999
F.E. Youngblood, Wayne Co. Register of Deeds
RDANDSYL

- 1. Public Land Survey T 2S R 9E NANKIN TWPI08
2. Property Controlling in Section S T R
3. Miscellaneous Property in Sec. S T R

Compliance with ACT 345, P.A. 1990
APPROVED ON: 12-10-99
WAYNE COUNTY REMONUMENTATION PEER GROUP COMMITTEE
Register of Deeds Stamp & File Number

- 4. Lot No. , Recorded Plat
5. Private Claims

I, PETER P. PALCZYNSKI, P.S. in a field survey on 30 NOV 19 99 do hereby state that under requirements of P.A. 74, Michigan P.A. of 1970, the corner points mentioned in lines 1 and 2 above were in conformance with regulations and rules therefore as required in the current manual of survey instructions of the United States Department of the Interior, Bureau of Land Management or by a decree of a Court of Law and /or that the corner points mentioned in lines 3, 4 and 5 above were in conformance with the rules of the Michigan Board of Land Surveyors or by a Decree of a Court of Law; established, re-established, monumented, recovered, found as expressed below:



NOTE: Not more than 2 corners, all in the same town and range, may be recorded on this certificate.

A. Description of original monument and accessories and/or subsequent restoration: G-11
1816 GLO: SET POST W.O. 9" N60W 17 LKS.
JOSEPH FLETCHER LYNN 12" S54W 29 LKS

SEE BACK OF THIS SHEET (NEXT PAGE) FOR CONTINUATION OF SECTION "A"

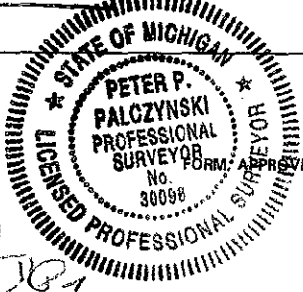
B. Description of corner evidence found and/or method applied in restoring or reestablishing corner: G-11
FD 1-1/2" IRON PIPE 0.2' DEEP, REMOVED PIPE & FD 3/4" IRON ROD, 1.3' DEEP AT SAME LOCATION, REMOVED ROD & FD 3/4" PIPE, 2.7' DEEP AT SAME LOCATION AS ABOVE. SET WCR ALUMINUM CAP STAMPED "PPP-PS 30096" ON 1/2" STEEL BAR IN CONC MON / MON BOX. SET IN 1.6' X 1.6' NEW CONC SLAB. (FD CAPPED IRON "WT 33138" 0.9' SE OF FD POINTS) CORNER POSITION VERIFIED USING COMPARISONS TO RECORD INFORMATION FROM SECTION "A".

MEASURED:
G-11 / H-11 = 2622.82 (2622.07 / 2622.71 WPA)
G-11 / G-12 = 2639.20 (2639.41 / 2638.03 WPA)
H-11 / G-11 / G-12 = 90 14' 29" (90 14' 05" WPA)

C. Description of monument for corner and accessories established to perpetuate locating the position of the corner: G-11
FD 1-1/2" IRON PIPE 0.2' DEEP, REMOVED PIPE & FD 3/4" IRON ROD, 1.3' DEEP AT SAME LOCATION, REMOVED ROD & FD 3/4" PIPE, 2.7' DEEP AT SAME LOCATION AS ABOVE. SET WCR ALUMINUM CAP STAMPED "PPP-PS 30096" ON 1/2" STEEL BAR IN CONC MON / MON BOX. SET IN 1.6' X 1.6' NEW CONC SLAB. (FD CAPPED IRON "WT 33138" 0.9' SE OF FD POINTS)
FD NAIL/WCRC TAG W FACE 36" ASH NORTH 14.04'
NW COR BRICK HOUSE CHIMNEY @ #33235 MORRIS (5)(R=44.91) N51E 44.88'
SW COR BRICK HOUSE CHIMNEY @ #33235 MORRIS (1)(R= 44.28) N53E 44.22'
SW COR BRICK HOUSE @ #33235 MORRIS N75E 40.31'
SET NAIL/WCR TAG IN SW FACE UTILITY POLE (6)(R=34.67) S49E 34.66'
NE COR WOOD GARAGE S07W 34.68'
SE COR HOUSE @ 33405 MORRIS (7)(R=17.68) S51W 17.69'
NE COR OF PORCH @ 33405 MORRIS (8)(R=40.38) N26W 40.39'
FD NAIL/WCRC TAG W FACE 36" ASH NORTH 14.04'

SELECTED LOCATION IS ACCEPTED BY THE CONTRACTOR AND IS GENERALLY ACCEPTED BY PROFESSIONAL SURVEYORS AS THE BEST AVAILABLE EVIDENCE OF THE POSITION OF THE ORIGINAL CORNER.

Signed by [Signature] Date 1 DEC 99
Surveyor's Michigan License No. 30096



2S9EG-11.DOC

R LCR 12 4R 2pg A

1999 WAYNE COUNTY REMONUMENTATION PROGRAM

History compiled by:
Peter P. Palczynski, P.S. # 30096
AMBIT LAND SURVEYORS, INC.

Liber-30821

Page-43

Continuation of Section "A"

NANKIN TOWNSHIP TOWN 2 SOUTH, RANGE 9 EAST
G-11 (SECTION CORNER 27, 28, 33 & 34)

DATE	COMPANY SURVEYOR JOB #	P.S. #	P.A. 74 L.C.R.C.	LOCATION OF SURVEY	MONUMENT DESCRIPTION	WITNESSES	BEARING & DISTANCE	ID #	COMMENT
1816	G.L.O. JOSEPH FLETCHER W.P.A.				SET POST	W.O. 9" LYNN 12" BRICK CHIMNEY IRON	N60°W 17 LKS S54°W 29 LKS		NOTES = 40.00 CHAINS
1930'S					IRON (NW-34 #137)	6" BASSWOOD 12" ELM	NE 44.28' SE 63.49' SW 21.35' NW 55.65'	1 2 3 4	M = 44.22 GONE GONE GONE W.P.A. RECORD: G-11 / H-11 = 2622.07' / 2622.71' G-11 / G-12 = 2639.41' / 2638.03' H-11 / G-11 / G-12 = 90 14' 05"
1917	C.G. MORRISON SURVEYOR			CLARK SUB. L38 P47 WCR	NOT STATED	NOT STATED	NOT STATED		N/A
1921	W.S. PARKER REGISTERED ENGINEER			WOODWORTH GARDENS SUB L43 P83 WCR	NOT STATED	NOT STATED	NOT STATED		N/A
1937	HARRY B. MILLER REG CIVIL ENGINEER			SUPERVISOR'S NANKIN #14 L65 P 87 WCR	NOT STATED	NOT STATED	NOT STATED		N/A
1937	HARRY B. MILLER REG CIVIL ENGINEER			SUPERVISOR'S NANKIN #13 L65 P 86 WCR	NOT STATED	NOT STATED	NOT STATED		N/A
1964	W.P.A.				IRON (NW-34 #137)	BRICK CHIMNEY NW CORNER POWER POLE SE HOUSE CORNER NW HOUSE CORNER	NE 44.91' SE 34.67' SW 17.68' NW 40.38'	5 6 7 8	M = 44.88' M = 34.67' M = 17.89' M = 40.39' NOT SAME POINT AS MONUMENTED
1996	JAMES E. KOVAS, RLS	#33138		LCRC L.29252 P.679	SET IRON ROD WITH CAP PS #33138	NAIL / MSHD TAG SW U. POLE SE COR HOUSE #33405 MORRIS N / FENCE LINE SW COR HOUSE #33235 MORRIS	S40E 10.281M S45W 5.486M W 0.305M N85E 12.098M		