

MAR 17 1998
FILE DO NOT MAIL

SECTION

LAND CORNER RECORDATION CERTIFICATE

Filing Requirement of Act 74, Mich. P.A. 1970

For corners in

WAYNE Located In: Corner Code #
(County)

- 1. Public Land Survey T 2 S R 9 E H-3
T R CITY OF WESTLAND
T R NANKIN TOWNSHIP
T R
- 2. Property Controlling S T R
in Section S T R
- 3. Miscellaneous S T R
Property in Sec. S T R

- 4. Lot No. _____, Recorded Plat _____
- 5. Private Claims _____

Compliance with
ACT 345, P.A. 1990

APPROVED ON: 12-11-97
WAYNE COUNTY REMONUMENTATION
PEER GROUP COMMITTEE

Register of Deeds Stamp & File Number

I, PETER P. PALCZYNSKI in a field survey on 1 DECEMBER, 19 97, do hereby certify that under requirements of P.A. 74, Michigan P.A. of 1970, the corner points mentioned in lines 1 and 2 above were in conformance with regulations and rules therefore as required in the current manual of survey instructions of the United States Department of the Interior, Bureau of Land Management or by a decree of a Court of Law and/or that the corner points mentioned in lines 3, 4 and 5 above were in conformance with the rules of the Michigan Board of Land Surveyors or by a Decree of a Court of Law; established, re-established, monumented, re-monumented, recovered, found as expressed below:

NOTE: Not more than 4 corners, all in the same town and range, may be recorded on this certificate.

A. Description of original monument and accessories and/or subsequent restoration:

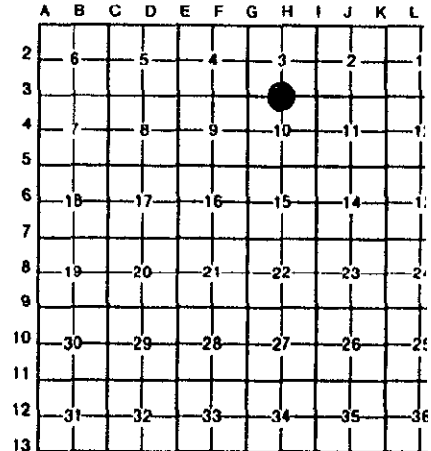
1816 G.L.O. - SET POST SUG 14" S3°E 38 LKS.
JOSEPH FLETCHER BEECH 12" S86°E 33 LKS.

SEE BACK OF THIS SHEET (NEXT PAGE)
FOR CONTINUATION OF SECTION "A"

\$10.00 DEED

RECORDED
FOREST E. YOUNGBLOOD, REGISTER OF DEEDS
WAYNE COUNTY, MI
Receipt #42846

\$4.00 REMONUMENTATION



B. Description of corner evidence found and/or method applied in restoring or reestablishing corner:

FOUND 3/8" IRON ROD IN CONCRETE MONUMENT / MONUMENT BOX, AT CENTERLINE OF WARREN ROAD & HUBBARD AVENUE IN 63" WIDE CONCRETE PAVEMENT WITH CONCRETE CURBS. SET BRASS WAYNE COUNTY REMON WASHER & PLASTIC CAP "PPP PS #30096" ON CONC MON IN MON BOX.

MEASURED:
G-3/H-3/I-3 = 180°00'03"
(WPA = 180°00'00")
(I-3/H-3/G-3 = 179°59'57"
(WPA = 180°00'00")

CORNER POSITION VERIFIED USING 1 WITNESS AND COMPARISONS TO RECORD INFORMATION FROM SECTION "A".

MEASURED:
H-3 / G-3 = 2626.95' (WPA=2626.54'/2626.84')
H-3 / I-3 = 2622.24' (WPA=2621.57'/2621.55')

C. Description of monument for corner and accessories established to perpetuate locating the position of the corner:

H-3, T2S, R9E	SOUTHWEST HOUSE CORNER #32250 (5) (R=114.14')	N05°E	114.14'
FOUND 3/8" IRON ROD IN CONCRETE MONUMENT / MONUMENT BOX, AT CENTERLINE OF WARREN ROAD & HUBBARD AVENUE IN 63" WIDE CONCRETE PAVEMENT WITH CONCRETE CURBS. SET BRASS WAYNE COUNTY REMON WASHER & PLASTIC CAP "PPP PS #30096" ON CONC MON IN MON BOX.	FD NAIL/WCRC REF PT TAG NW FACE OF UTILITY POLE (6)(R=103.73')	N60°E	103.73'
	FOUND CONCRETE MONUMENT	N82°E	452.42'
	CENTERLINE OF FIRE HYDRANT STEM (1) (R=76.05')	S47°E	76.01'
	FOUND 1" DIAMETER IRON PIPE (7)(R=74.10')	S36°E	74.10'
	FD PK NAIL/TAG #17618 IN NE FACE OF UTILITY POLE (8)(R=62.66')	S35°E	62.66'
	SET NAIL/WCR TAG IN NW FACE OF UTILITY POLE (9)(R=56.41')	S35°W	56.41'
	BACK OF CONCRETE CURB	NORTH	31.8'

SELECTED LOCATION IS ACCEPTED BY THE CONTRACTOR AND IS GENERALLY ACCEPTED BY PROFESSIONAL SURVEYORS AS THE BEST AVAILABLE EVIDENCE OF THE POSITION OF THE ORIGINAL CORNER.

Signed by [Signature] Date 11 DEC 97

Surveyor's Michigan License No. 30096

DD

1997 WAYNE COUNTY REMONUMENTATION PROGRAM

Continuation of Section "A"

History compiled by:
Peter P. Palczynski, P.S. # 30096
AMBIT LAND SURVEYORS, INC.

NANKIN TOWNSHIP TOWN 2 SOUTH, RANGE 9 EAST
H-3 (SECTION CORNER 3, & 10)

DATE	COMPANY SURVEYOR JOB #	P.S. #	P.A. 74 L.C.R.C.	LOCATION OF SURVEY	MONUMENT DESCRIPTION	WITNESSES	BEARING & DISTANCE	ID #	COMMENT
1816	G.L.O. JOSEPH FLETCHER				SET POST	SUG 14" BEECH 12"	S3°E 38 LKS. S86°E 33 LKS.		NOTES = 39.945 CHAINS
1930'S	W.P.A.				IRON (N-10 #32)	HYDRANT 6" ELM 5TH FENCE POST 10" MAPLE	SE 76.05' NE 80.58' SE 105.88' SW 170.41'	1 2 3 4	M = 76.01' GONE GONE GONE W.P.A. RECORD: H-3 / G-3 = 2626.54' / 2626.84' H-3 / I-3 = 2621.57' / 2621.55' G-3 / H-3 / I-3 = 180°00'00" I-3 / H-3 / G-3 = 180°00'00" M = 2622.24'
24AUG25	CHARLES E. KNIGHT, REG. CIVIL ENG.		"FOLKER'S GARDEN CITY ACRES #21' L57, P39, WCR	NE 1/4 SECTION 10 T2S, R9E	NOT STATED	NOT STATED	H-3 / I-3 = 2622.20' / PLAT		
08DEC55	HERALD F. HAMILL, RLS		"SINK SUB." L.79, P56 WCR	S 1/2 SEC 3, T2S, R9E	NOT STATED	NOT STATED	G-3/H-3/I-3 = 180°00'00" / PLAT		M = 179°59'57"
25OCT95	AMBIT INC. PETER P. PALCZYNSKI	PS #30096		NW 1/4 SEC 10, T2S, R9E	FOUND 3/8" IRON ROD IN CONCRETE MONUMENT / MONUMENT BOX	SW COR HSE #32250 FD NAIL/WCRC REF PT TAG NW FACE UTILITY POLE FD 1" DIA. IRON PIPE FD PK NAIL/TAG #17618 NE FACE UTILITY POLE SET NAIL/WCR TAG NW FACE UTILITY POLE	N05°E 114.14' N60°E 103.73' S36°E 74.10' S35°E 62.66'	5 6 7 8	M = 114.14' M = 103.73' M = 74.10' M = 62.66'
							S35°W 56.41'	9	M = 56.41'

**SURVEY &
REMONUMENTATION**

MAR 17 1998

SECTION