

DEC 22 1998 4

FILE DO NOT MAIL

SURVEY & REMONUMENTATION

MAR 02 1999

LAND CORNER RECORDATION CERTIFICATE
Filing Requirement of Act 74, Mich. P.A. 1970

SECTION

For corners in

WAYNE (County)

Located In:

Corner Code #/

- 1. Public Land Survey T 2 S R 9 E K-4 GARDEN CITY NANKIN TWP (08)
2. Property Controlling in Section S T R
3. Miscellaneous Property in Sec. S T R

Compliance with ACT 345, P.A. 1990
APPROVED ON: 12-10-98
WAYNE COUNTY REMONUMENTATION PEER GROUP COMMITTEE
Register of Deeds Stamp & File Number

- 4. Lot No. Recorded Plat
5. Private Claims

PETER P. PALCZYNSKI in a field survey on 1 DECEMBER 1998 do hereby certify that under requirements of P.A. 74, Michigan P.A. of 1970, the corner points mentioned in lines 1 and 2 above were in conformance with regulations and rules therefore as required in the current manual of survey instructions of the United States Department of the Interior, Bureau of Land Management or by a decree of a Court of Law and/or that the corner points mentioned in lines 3, 4 and 5 above were in conformance with the rules of the Michigan Board of Land Surveyors or by a Decree of a Court of Law, established, re-established, monumented, re-monumented, recovered, found as expressed below:

NOTE: Not more than 4 corners, all in the same town and range, may be recorded on this certificate.

A. Description of original monument and accessories and/or subsequent restoration: 1816 G.L.O. - 40.00 CHAINS NO WITNESSES TO TREE LISTED. WILLOW TREE 12" DIAM. CORNER TREE JOSEPH FLETCHER

SEE BACK OF THIS SHEET (NEXT PAGE) FOR CONTINUATION OF SECTION "A"

B. Description of corner evidence found and/or method applied in restoring or reestablishing corner:

FOUND 1/2" IRON IN CONCRETE MONUMENT / MONUMENT BOX, AT CENTERLINE INTERSECTION OF MAPLEWOOD AVE. & MIDDLEBELT ROAD IN 63' WIDE ASPHALT PAVEMENT WITH CONCRETE CURBS. SET BRASS WAYNE COUNTY REMON WASHER STAMPED "PPP PS #30096" ON CONC. MON. MEASURED: K-3/K-4/K-5 = 180°05'43" (WPA = 180°05'15" 180°05'40") K-5/K-4/K-3 = 179°54'17" (WPA = 179°54'20" 179°54'45")

CORNER POSITION VERIFIED USING COMPARISONS TO RECORD INFORMATION FROM SECTION "A".

MEASURED: K-4 / K-3 = 2562.55' (2562.21'/2562.37' WPA) K-4 / K-5 = 2685.95' (2685.96'/2686.16' WPA)

C. Description of monument for corner and accessories established to perpetuate locating the position of the corner:

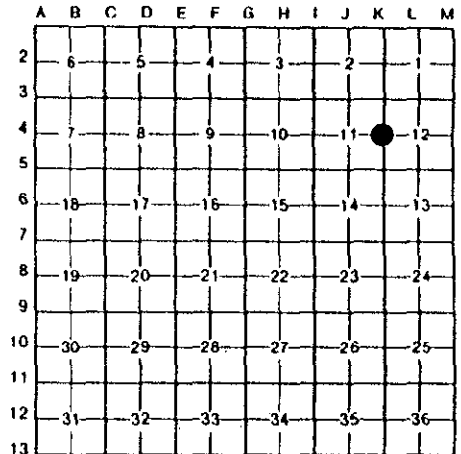
K-4, T2S, R9E FOUND 1/2" IRON IN CONC MON / MONUMENT BOX, AT CENTERLINE INTERSECTION OF MAPLEWOOD AVE. & MIDDLEBELT ROAD IN 63' WIDE ASPHALT PAVEMENT WITH CONCRETE CURBS. SET BRASS WAYNE COUNTY REMON WASHER STAMPED "PPP PS #30096" ON CONC. MON. CUT "X" IN SOUTHWEST RIM OF GATE VALVE & WELL (1) (R=39.46') N46°E 39.95' FD PK NAIL/WCRC TAG IN SE FACE OF UTILITY POLE (5) (R=75.85') N63°E 75.93' FOUND CUT "X" IN NW BOLT OF LIGHT POLE BASE EAST 49.25' SET NAIL/WCRC TAG IN SW FACE OF UTILITY POLE S38°E 74.46' FD PK NAIL/WCRC TAG IN SE FACE OF UTILITY POLE (7) (R=75.68') S44°W 75.69' CENTERLINE FIRE HYDRANT STEM N59°W 73.00' FD PK NAIL/WCRC TAG IN SW FACE OF UTILITY POLE (8) (R=62.67') N53°W 62.67' FD "V" CUT IN SOUTHEAST RIM OF GATE VALVE/WELL(4)(R=60.87') N42°W 60.80'

SELECTED LOCATION IS ACCEPTED BY THE CONTRACTOR AND IS GENERALLY ACCEPTED BY PROFESSIONAL SURVEYORS AS THE BEST AVAILABLE EVIDENCE OF THE POSITION OF THE ORIGINAL CORNER.

Signed by [Signature] Date 21 DEC 98

Surveyor's Michigan License No. 30096

2S9EK4.DOC R LCR 10 4R 2PG U. P.P. 1



\$4.00 REMONUMENTATION \$10.00 DEED
RECORDED
FOREST E. YOUNGLOOD, REGISTER OF DEEDS
WAYNE COUNTY, MI
Receipt #101465



98455377LS 12/22/1998 08:31AM

1998 WAYNE COUNTY REMONUMENTATION PROGRAM

Continuation of Section "A"

History compiled by:
Peter P. Paiczynski, P.S. # 30096
AMBIT LAND SURVEYORS, INC.

NANKIN TOWNSHIP TOWN 2 SOUTH, RANGE 9 EAST
K-4 (SECTION CORNER 11 & 12)

DATE	COMPANY SURVEYOR JOB #	P.S. #	P.A. 74 L.C.R.C.	LOCATION OF SURVEY	MONUMENT DESCRIPTION	WITNESSES	BEARING & DISTANCE	ID #	COMMENT
1816	G.L.O. JOSEPH FLETCHER				WILLOW TREE 12" DIAMETER CORNER TREE	NONE LISTED TO TREE			NOTES = 40.00 CHAINS
1930'S	W.P.A.				IRON (W-12 #50 FOR NANKIN TOWNSHIP T2S, R9E)	WATER GATE MANHOLE RIM ABUTMENT ABUTMENT WATER GATE MANHOLE RIM	NE 39.46' SE 24.73' SW 24.82' NW 50.67'	1 2 3 4	39.95' NEW RIM GONE GONE 60.80' NEW RIM W.P.A. RECORD: K-4/K-5 = 2685.96' / 2686.16' K-4/K-3 = 2562.21' / 2562.37' K-3/K-4/K-5 = 180° 05' 15" / 180° 05' 40" K-5/K-4/K-3 = 179° 54' 20" / 179° 54' 45" J-4 NOT FOUND
13 MAY 25	CHARLES E KNIGHT REG CIVIL ENGINEER			NE 1/4 SECTION 11	NOT STATED	NOT STATED			
30 AUG 24	H. S. PARKER REG CIVIL ENGINEER			SE 1/4 SECTION 11	NOT STATED	NOT STATED			N/A
NOT STATED	NOT STATED			NW 1/4 SECTION 12	NOT STATED	NOT STATED			N/A
27 JUN 30	CHARLES E KNIGHT REG CIVIL ENGINEER			SW 1/4 SECTION 12	NOT STATED	NOT STATED			N/A
25 APRIL 73	ROSKELLY JEKABSON ASSOC.	18663		SE 1/4 SECTION 11	CONC MON IN BOX	NOT LISTED			
6 DEC 89	ROBERT ROSKELLY, RLS WAYNE COUNTY PUBLIC SERVICES	N/A		W 1/4 CORNER SECTION 12	MON IN BOX	WCRC / TAG NW DE POLE WCRC / TAG SW DE POLE WCRC / TAG SE DE POLE WCRC / TAG SW DE POLE	63°NE 75.85' 38°SE 55.43' 44°SW 75.68' 57°NW 62.67'	5 6 7 8	MEAS = 75.93' GONE MEAS = 75.69' MEAS = 62.67'

SURVEY & REMONUMENTATION

MAR 02 1999

SECTION

WKN-K-4.DOC